

# **FRD** FURUKAWA FURUKAWA ROCK DRILL USA

Breaker/Attachment  
Division

Meeting the Equipment Needs of the Mining and Construction Industries.



## Improved Breaker Design Increases Productivity

Furukawa's latest small **Fx $\alpha$**  series breakers result from changes to just three internal components -- the piston, cylinder liner and seal retainer. As a result, the **Fx $\alpha$**  series is harder-hitting and increases productivity.

Nearly all components are interchangeable, and you can continue to use the same working steel...same seal kit...and same front bushing.

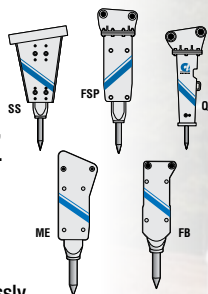
### Features and Benefits:

- > Mono-block design with only two moving parts reduces maintenance
- > No through-bolts to maintain or diaphragm to replace
- > Field replaceable front wear bushing keeps tools in peak performance
- > Wide oil flow range for fast, hard-hitting performance and more carrier options
- > A variety of mounting options that can accommodate any carrier or application
- > Field replaceable long front head bushing keeps steel in proper alignment for maximum service life
- > Oval retaining pin for increased steel contact and double service life (Fx45a/Fx55a only)

### 5 Configurations:

**FB Version (Fx15a-Fx35a)**  
**ME Version (Fx35a-Fx55a):**

Breakers assembled with full-length side plates for direct mounting to mini-excavators and small rubber tire backhoes, not utilizing quick couplers.



**SS Version (Fx35a-Fx55a):**

Breakers assembled in a one-piece bracket incorporating a universal quick-attach feature expressly for skid steer application. No flexibility in carriers utilized.

**FSP Version (Fx35a-Fx55a):** Breakers assembled in side plates that require a bolt-on top cap or universal quick-attach bracket for carrier mounting. Allows flexibility of utilization between mini-excavators, rubber tire backhoes and skid steers.

**Qt Version (Fx35a-Fx55a):** Breakers totally encased in a protective, welded 'box' designed to reduce noise levels that require a bolt-on top cap or universal quick-attach bracket for carrier mounting. Allows flexibility of utilization between mini-excavators, rubber tire backhoes and skid steers.

**Fx15 $\alpha$ /25 $\alpha$ /35 $\alpha$ /45 $\alpha$ /55 $\alpha$**



IMPACT ENERGY CLASS	<i>Fx15<sub>a</sub></i> - 150 ft lb	<i>Fx25<sub>a</sub></i> - 275 ft lb	<i>Fx35<sub>a</sub></i> - 375 ft lb	<i>Fx45<sub>a</sub></i> - 550 ft lb	<i>Fx55<sub>a</sub></i> - 800 ft lb
<b>Weight in lbs. (kg)*</b>					
FB configuration	130 (59)	181.5 (82.33)	278 (126)	n/a	n/a
SS configuration	n/a	n/a	549 (247)	784 (356)	840 (381)
FSP configuration**	n/a	n/a	460 (209)	606 (275)	714 (324)
Qt configuration**	n/a	n/a	470 (213)	550 (250)	720 (327)
<b>Length in inches (mm)*</b>					
FB configuration	36.63 (930)	43.5 (1106)	49.38 (1254)	n/a	n/a
SS configuration	n/a	n/a	51 (1295)	57.5 (1461)	61 (1549)
FSP configuration**	n/a	n/a	50 (1270)	54 (1372)	60 (1524)
Qt configuration**	n/a	n/a	48.5 (1232)	52.75 (1340)	57.5 (1461)
<b>Working Steel***</b>					
Diameter in inches (mm)	1.42 (36)	1.77 (45)	2.05 (52)	2.36 (60)	2.68 (68)
Replaceable length measured from fronthed in inches (mm)	7 (175)	8.5 (215)	9 (225)	9.5 (240)	10 (250)
<b>General Specifications</b>					
Blows per minute (variable)	600 ~ 1500	600 ~ 1500	600 ~ 1500	600 ~ 1100	500 ~ 1100
Previous oil flow range gpm (lpm)	2.6 ~ 5.8 (10 ~ 22)	4.75 ~ 8.5 (18 ~ 32)	6 ~ 11 (24 ~ 42)	7.9 ~ 14.8 (30 ~ 56)	10.5 ~ 19 (40 ~ 72)
Increased oil flow range gpm (lpm)	2.6 ~ 7.4 (10 ~ 28)	4.7 ~ 9.2 (18 ~ 35)	6 ~ 14 (23 ~ 53)	7.9 ~ 15.9 (30 ~ 60)	10.5 ~ 22.5 (40 ~ 85)
Operating pressure psi (MPa)	1450 ~ 2030 (10 ~ 14)	1450 ~ 2030 (10 ~ 14)	1740 ~ 2320 (12 ~ 16)	1740 ~ 2320 (12 ~ 16)	1740 ~ 2320 (12 ~ 16)
Qt configuration; 85 dB(A) @	n/a	n/a	7.5m	7.5m	8.0m
Recommended carrier range in U.S. tons	0.55 ~ 1.65	1.1 ~ 2.75	1.65 ~ 4.41	2.75 ~ 6.1	4.4 ~ 7.7
Carrier Options	■	■ ■ ■ ■	■ ■ ■ ■ ■	■ ■ ■ ■ ■	■ ■ ■ ■ ■



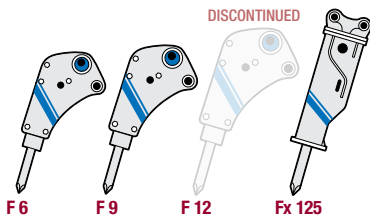
**Notes** \* Weights and lengths for all configurations include standard Working Steel (less mounting & Hose Whips)  
 \*\* Weights and lengths for FSP's & Qt's include a Universal Top Cap (less mounting & Hose Whips)  
 \*\*\* All working steels are interchangeable with the previous F-Series

# ■ MEDIUM SERIES HYDRAULIC BREAKERS

## Features and Benefits:



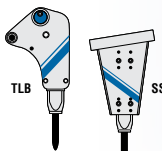
- > The TLB version is available with Furukawa's patented Switch-Hitch side plate mounting system. An indexing disc inserted in the side plate can be easily changed to accommodate quick-couplers for many backhoes
- > Longer thrust bushing improves piston alignment during impact and incorporates grease holes to evenly distribute grease in the front head
- > CD designed side bolt threads (only applies to F6 and F9) provide even load distribution and greater surface contact between the nut and bolt reducing the chances of thru-bolt failure
- > Increased front head wall thickness for added service life
- > The new Fx125 for backhoes and excavators has eliminated a problem that has long plagued the breaker industry – Thru-Bolts.



## 4 Configurations:

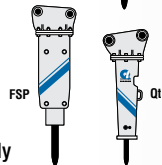
### TLB Version:

Breakers assembled with full-length side plates for direct mounting to mini-excavators and small rubber tire backhoes, not utilizing quick couplers.



### SS Version (F6 only):

Breakers assembled in a one-piece bracket incorporating a universal quick-attach feature expressly for skid steer application. No flexibility in carriers utilized.



**FSP Version:** Breakers assembled in side plates that require a bolt-on top cap or universal quick-attach bracket for carrier mounting. Allows flexibility of utilization between mini-excavators, rubber tire backhoes and skid steers.

**Qt Version:** Breakers totally encased in a protective, welded 'box' designed to reduce noise levels that require a bolt-on top cap or universal quick-attach bracket for carrier mounting. Allows flexibility of utilization between mini-excavators, rubber tire backhoes and skid steers.

## F6/9/Fx125



IMPACT ENERGY CLASS	F6 - 1000 ft lb	F9 - 1500 ft lb	F12 - 2000 ft lb <small>DISCONTINUED</small>	Fx125 - 2000 ft lb
<b>Weight in lbs (kg)*</b>				
TLB Version	700 (317)	1,120 (508)	1,862 (844)	1,348 (611.4)
SS Version	939 (426)	n/a	n/a	n/a
FSP Version	875 (397)**	1,121 (554)**	n/a	n/a
Qt Version	958 (434)**	1,403 (636)**	2,409 (1,092)	1,820 (825.5)
<b>Length in inches (mm)*</b>				
TLB Version	57 (1,448)	63.25 (1,606)	80 (2,032)	77 (1,956)
SS Version	63 (1,600)	n/a	n/a	n/a
FSP Version	56.5 (1,435)**	75.5 (1,918)**	n/a	n/a
Qt Version	55.25 (1,403)	74.5 (1,461)	90.25 (2,292)	94.25 (2,394)
<b>Working Steel***</b>				
Diameter in inches (mm)	3 (76.2)	3.5 (90)	4.25 (105)	4.33 (110)
New length measured from fronthed (in)	17.75	19.5	25.50 (648)	26.75 (680)
Replaceable length measured from fronthed (in)	12.25	13.75	13.75 (349)	15.94 (405)
<b>General Specifications</b>				
Adjustable BPM	650 ~ 1,500	550 ~ 900	450 ~ 900	400 ~ 650
Acceptable GPM Range (LPM)	13 ~ 40 (50 ~ 150)	17 ~ 30 (65 ~ 114)	26 ~ 35 (100 ~ 130)	18.5 ~ 31.5
Acceptable PSI Range (Bar)	1,450 ~ 2,320 (100 ~ 160)	1,700 ~ 2,150 (120 ~ 150)	2,320 ~ 2,610 (160 ~ 180)	2,320 ~ 2,610
85 dB(A) Qt version @	10 - meters (Qt)	11 - meters (Qt)	12 - meters (Qt)	12 - meters (Qtv)
Recommended Carrier Range in U.S. tons	6 ~ 7	7 ~ 10	10 ~ 15.5	10 ~ 15
Carrier Options	■ ■	■ ■	■ ■ ■	■ ■ ■

**Notes** 1. Weights and lengths for all versions include Working Steel

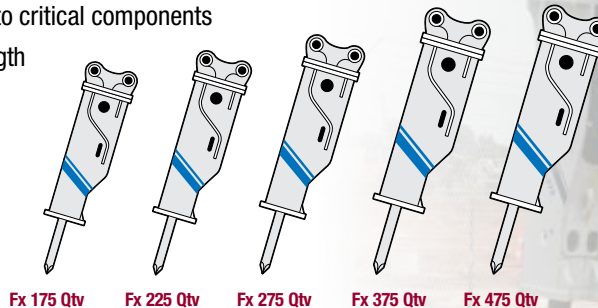
2. All weights and lengths for FSP's and Qt versions marked\*\*include a "Universal" Top Cap



# ■ LARGE FX SERIES HYDRAULIC BREAKERS with Qtv Technology

## Features and Benefits:

- Increased hydraulic flow range for use on a wider range of carriers
- Mono-block design eliminates a separate cylinder, fronthead and thru-bolts
- Improved Dust Intake Prevention system increases reliability
- Replaceable cylinder liner with concentric porting keeps piston aligned for maximum impact performance
- Improved valve design reduces hydraulic fluid temperatures which increases performance
- Longer thrust bushing for increased internal alignment also insures direct impact with piston
- 3-point sealing system prevents internal contamination
- Redesigned piston increases surface contact to working steel
- Improved dampening system keeps breaker properly secure in cradle to reduce wear
- Qtv cradle for improved protection, sound suppression and dampening
- Increased and improved lubrication to critical components
- Square body design for superior strength

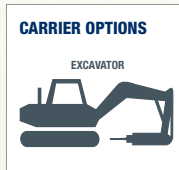


## *FX175/225/275/375/475* *Qtv Series*



<b>IMPACT ENERGY CLASS</b>	<b>Fx 175 Qtv - 3250 ft lb</b>	<b>Fx 225 Qtv - 4250 ft lb</b>	<b>Fx 275 Qtv - 5250 ft lb</b>	<b>Fx 375 Qtv - 6500 ft lb</b>	<b>Fx 475 Qtv - 8500 ft lb</b>
*Weight in Lbs (kg)	2,095 (1,402)	3,734 (1,694)	3,758 (1,705)	5,390 (2,444)	7,021 (3,185)
*Length in inches (mm)	100 (2,540)	113 (2,870)	119 (3,026)	135 (3,249)	146 (3,708)
<b>Working Steel</b>					
Diameter in inches (mm)	4.72 (120)	5.31 (135)	5.51 (140)	6.10 (155)	6.69 (170)
New length measured from fronthead in inches (mm)	27.36 (695)	29.02 (737)	30.3 (770)	31.89 (810)	32.68 (830)
Replaceable length measured from fronthead in inches (mm)	16.14 (410)	16.93 (430)	17.72 (450)	19.30 (490)	20.08 (510)
<b>General Specifications</b>					
Adjustable BPM	450 ~ 600	350 ~ 550	350 ~ 550	300 ~ 450	250 ~ 350
Acceptable GPM Range (LPM)	26 ~ 42 (98 ~ 158)	33 ~ 50 (124 ~ 189)	38 ~ 58 (144 ~ 220)	45 ~ 69 (170 ~ 261)	53 ~ 79 (200 ~ 299)
Acceptable PSI Range (Bar)	2,320 ~ 2,610 (160 ~ 180)	2,350 ~ 2,610 (160 ~ 180)	2,320 ~ 2,610 (160 ~ 180)	2,320 ~ 2,610 (160 ~ 180)	2,320 ~ 2,610 (160 ~ 180)
85 dB(A)@	13 - meters	14 - meters	14 - meters	19 - meters	22 - meters
Recommended Carrier in U.S. Tons	13 ~ 22 (12 ~ 20)	21 ~ 26.5 (19 ~ 24)	21 ~ 33 (19 ~ 30)	28 ~ 44 (25 ~ 40)	39 ~ 61 (35 ~ 55)
Carrier Options	■	■	■	■	■

**\*Note:** Total weight and total length include standard working steel and universal top cap less mounting pins and bushings.



# EXTRA LARGE SERIES HYDRAULIC BREAKERS

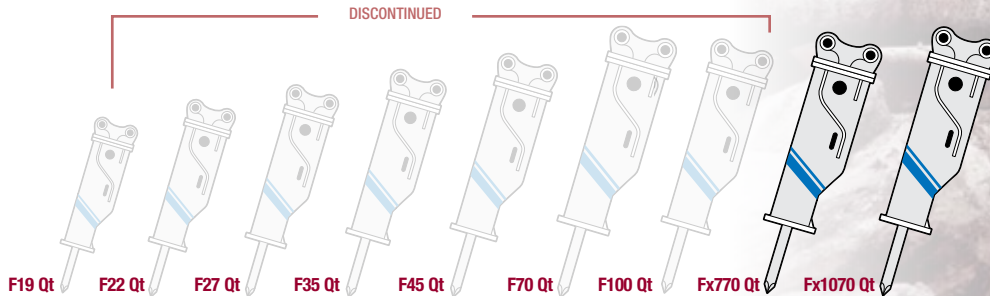
## Features and Benefits:

### > Fx 770

- Increased carrier range (48.5 to 83 ton) over its predecessor, the F70 Qt (48.5 to 77 ton), allowing use on a wider range of carriers
- Larger diameter working steel (7.48") and higher backhead pressure increases impact by 10% over the F70 Qt even though both operate with the same pressure and flow
- Replaceable cylinder liner with concentric porting keeps piston aligned for maximum impact performance

### > Fx 1070

- Wide carrier range (65 to 110 tons) for use on a large variety of carriers
- Large diameter working steel at 8.27 inches (210 mm)
- High back-head pressure (201-221 psi at 75 degrees to 95 degrees)



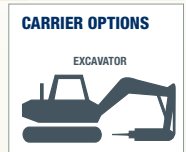
## Fx770/Fx1070





IMPACT ENERGY CLASS	DISCONTINUED							Fx770 Qt - 12000 ft lb	Fx1070 Qt - 15000 ft lb
	F19 Qt - 3000 ft lb	F22 Qt - 4000 ft lb	F27 Qt - 5000 ft lb	F35 Qt - 6000 ft lb	F45 Qt - 8000 ft lb	F70 Qt - 10000 ft lb	F100 Qt - 15000 ft lb		
Weight in Lbs (kg)	3,090 (1,402)	3,812 (1,729)	4,244 (1,925)	5,328 (2,417)	7,507 (3,405)	10,274 (4,670)	17,390 (7,887)	10,742 (4,872)	14,550 (6,600)
Length in inches (mm)	102 (2,590)	105 (2,667)	114 (2,896)	121 (3,086)	29 (3,280)	148.5 (3,775)	176.50 (4,483)	155.7 (3,955)	149.60 (3,800)
<b>Working Steel</b>									
Diameter in inches (mm)	4.75 (120)	5.25 (135)	5.51 (140)	6 (150)	6.5 (165)	7.09 (180)	8.27 (210)	7.48 (190)	8.27 (210)
New length measured from fronthead in inches (mm)	27.50 (699)	28.50 (724)	29.50 (749)	30.50	31.50 (800)	34.00		33.85 (860)	38.5 (978)
Replaceable length measured from fronthead in inches (mm)	15.00 (381)	16.00 (406)	17.00 (431)	18.00	19.00 (483)	21.25		21.25 (540)	25.25 (641)
<b>General Specifications</b>									
Adjustable BPM	400 ~ 750	360 ~ 700	340 ~ 440	320 ~ 600	300 ~ 500	250 ~ 320	200 ~ 350	250 ~ 330	200 ~ 375
Acceptable GPM Range (LPM)	26.5 ~ 41 (100 ~ 155)	37 ~ 48 (140 ~ 180)	41 ~ 50 (155 ~ 190)	46 ~ 58 (175 ~ 220)	50 ~ 66 (190 ~ 250)	66 ~ 90 (250 ~ 340)	74 ~ 103 (280 ~ 390)	66 ~ 90 (250 ~ 340)	52 ~ 99 (200 ~ 375)
Acceptable PSI Range (Bar)	2,320 ~ 2,610 (160 ~ 180)	2,320 ~ 2,610 (160 ~ 180)	2,320 ~ 2,610 (160 ~ 180)	2,320 ~ 2,610 (160 ~ 180)	2,320 ~ 2,610 (160 ~ 180)	2,320 ~ 2,610 (160 ~ 180)	2,320 ~ 2,610 (160 ~ 180)	2,320 ~ 2,610 (160 ~ 180)	2,320 ~ 2,610 (160 ~ 180)
85 dB(A)@	13 - meters	14 - meters	15 - meters	16 - meters	17 - meters	18 - meters		17 - meters	17 - meters
Recommended Carrier in U.S. Tons	15.5 ~ 21	21 ~ 24	24 ~ 28.5	28.5 ~ 35	35 ~ 48.5	48.5 ~ 77	72 ~ 110	48.5 ~ 83	65 ~ 110
Carrier Options	■	■	■	■	■	■	■	■	■

**Note: 1.** Weight and length for all versions include working steel and "Universal" top cap.



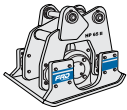
# ■ PLATE COMPACTORS

## Features and Benefits:

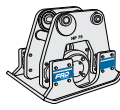
- Eliminates costly trench boxes and shoring
- Drives sheeting for retaining walls
- Rubber shocks absorb vibration protecting the carrier's boom
- Available with O.E.M. bolt-on top cap or floating boss design
- The TLB version is available with Furukawa's patented Switch-Hitch side plate mounting system. An indexing disc inserted in the side plate can be easily changed to accommodate quick-couplers for many backhoes
- HP 35's designed for use in narrow trenches with a footprint of only 12"
- HP 65 II 18" is designed for use in 18" ditches or wider
- Unprecedented range of hanger brackets
- Wider range of impulse force: 3,000 lbs. to 7,800 lbs.



HP 35 ME



HP 65 II



HP 75

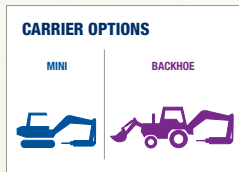


## HP35 ME/65 II/75



COMPACTION MODEL	HP 35 ME	HP 65 II 18"	HP 65 II 24"	HP 75
Impulse Force lbs. (kg)	3,000 (1361)	6,500 (2948)	6,500 (2948)	7,800 (3538)
Cycles Per Minute	2,000	2,000	2,000	2,000
Operating Pressure PSI (BAR)	2,000 (138)	2,000 - 2,400 (138-165)	2,000 - 2,400 (138-165)	1,800 - 2,200 (124-152)
Hydraulic Flow Req'd GPM (LPM)	7.5 (28)	12-15 (45-57)	12-15 (45-57)	18-22 (68-83)
Approximate Weight in lbs. (kg)*	350 (159)	742 (336)	850 (385)	850 (385)
Approximate Height in Inches (mm)*	20 (508)	27.5 (702)	27.5 (699)	27.5 (699)
Width in Inches (mm)	12 (305)	18 (457)	24 (610)	24 (610)
Pin Spacing in Inches (mm)	As required	As required	As required	As required
Mounting Pin Diameter	As required	As required	As required	As required
Base Plate Dimensions in Inches (WxL) (mm)	12 x 26 (305 x 660)	18 x 34 (457 x 864)	24 x 34 (610 x 864)	24 x 34 (610 x 864)
Compaction Area sq. ft. (sq. m)	2.2 (.20)	4.25 (.39)	5.7 (.53)	5.7 (.53)
Hose Size in Inches (mm)				
Pressure Line in Inches (mm)	0.5 (13)	0.75 (19)	0.75 (19)	0.75 (19)
Return Line in Inches (mm)	0.5 (13)	0.75 (19)	0.75 (19)	0.75 (19)
Carrier Options	■ ■	■ ■	■ ■	■ ■

\* Weight and Height are specific for HydraPaks with Flat Top (FT) Hanger Assemblies, less mounting bracket. For accurate weight and height for models utilizing a different or specific hanger arrangement, please contact our Engineering Department.



# ■ PLATE COMPACTORS

## Features and Benefits:

- > Drives sheeting for retaining walls
- > Furukawa compactor/drivers feature special rubber shock absorbers which protect the boom by isolating it from the Hydra-Pak vibrations and a cross-over check valve protects the motor
- > Available with O.E.M. bolt-on top cap



HP 135 II



HP 135 Ft II



HP 210 II



HP 210 Ft II



**HP135 II/135Ft II/  
210 II/210 Ft II**



COMPACTION MODEL	HP 135 II	HP 135 Ft II	HP 210 II	HP 210 Ft II
Impulse Force lbs. (kg)	13,500 (6124)	13,500 (6124)	21,000 (9525)	21,000 (9525)
Cycles Per Minute	2,000	2,000	2,000	2,000
Operating Pressure PSI (BAR)	2,000 (138)	2,000 (138)	2,000 (138)	2,000 (138)
Hydraulic Flow Req'd GPM (LPM)	30 (114)	30 (114)	48 (182)	48 (182)
Weight lbs. (kg)*	1,335 (606)	1,400 (635)	2,150 (975)	2,180 (989)
Height in Inches (mm)*	34 (864)	27 (686)	39.5 (1003)	32 (813)
Width in Inches (mm)	28 (711)	28 (711)	34 (864)	34 (864)
Pin Spacing in Inches (mm)	15.75 (400)	O.E.M.	18.70 (475)	O.E.M.
Mounting Pin Diameter	As required	As required	As required	As required
Base Plate Dimensions in Inches (WxL) (mm)	28 x 40 (711 x 1,016)	28 x 40 (711 x 1,016)	34 x 46 (864 x 1,168)	34 x 46 (864 x 1,168)
Compaction Area sq. ft. (sq. m)	7.8 (.72)	7.8 (.72)	10.8 (1.0)	10.8 (1.0)
Hose Size in Inches (mm)				
Pressure Line in Inches (mm)	0.75 (19)	0.75 (19)	1 (25)	1 (25)
Return Line in Inches (mm)	1 (25)	1 (25)	1.25 (32)	1.25 (32)
Carrier Options	■	■	■	■

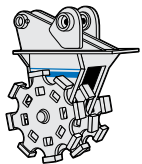
\* Weight does not include pins and bushings for all models or bolt-on top cap for Ft models



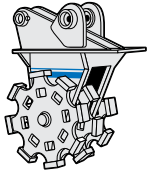
## ■ COMPACTION WHEELS

### Features and Benefits:

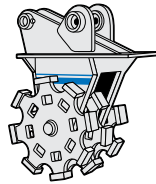
- Static wheel models available in pad foot designs to accommodate various soil conditions
- Can reach safely into trenches without costly shoring equipment
- CW series open wheel design allows for deep penetration into lifts for greater compaction
- Cast manganese steel wheels – Super strong one-piece construction from cast manganese steel – no welds to fatigue and break. This is the ultimate working steel, the more you work it, the harder it becomes
- Floating Top-Mount Boss – Our 'floating boss' mounting system incorporates standard mounting hardware while meeting 'OEM Pin Centers' for specific carrier mounting. This eliminates the long delays associated with OEM specific top caps
- Sealed high-strength composite bearings – The composite bearings are capable of carrying extremely high loads and are far less susceptible to contamination than ball or roller bearings
- All units come standard with grade plates for initial leveling



CW 18 PIII



CW 24 PIII



CW 36 PIII

## ***CW18 PIII/24 PIII/36 PIII***



COMPACTION WHEEL	CW 18 PIII	CW 24 PIII	CW 36 PIII
Weight in lbs. (kg)	1200 (544)	2380 (1080)	3350 (1520)
Wheel Width in Inches (mm)	17 (432)	23 (580)	35 (889)
Height in Inches (mm)	47.50 (1200)	59 (1499)	57.25 (1450)
Bracket Spacing in Inches (mm)	10.75 (273)	15 (400)	17 (430)
Wheel Diameter in Inches (mm)	30 (762)	40 (1000)	40 (1000)
Number of Wheels	3	3	4
Foot Configuration	Pad Foot	Pad Foot	Pad Foot
Carrier Options	■ ■	■	■



*The "floating boss" meets 'OEM Pin Centers' for specific excavator attachment.*



## ■ TEFRA COUPLER

The Tefra Auto Coupler allows you to quickly and safely change attachments creating a very versatile base machine and more productive work environment. The coupler features a patented safety mechanism that eliminates the need for manual locking pins found on competitive couplers. The primary safety system consists of a uniquely designed set of hooks powered by a single cylinder and high specification hydraulic controls that lock the attachment securely into place. Our secondary locking system is an Active Protection System (the APS) consisting of 2 separate powerful springs (coil and leaf) that apply pressure to the hooks to ensure attachment retention at all times.

PRIMARY LOCKING SYSTEM



SECONDARY LOCKING SYSTEM



### Features and Benefits:

- > A unique, fully patented major safety feature of the TEFRA Coupler
- > The Smart Valve is a simple, patented, totally effective solution ensuring that the attachment and release sequence cannot be started until the Coupler is orientated towards the operator and close to the ground. This eliminates the possibility of an unsafe situation occurring
- > The Smart Valves compact design means it can be totally enclosed within the hydraulic cylinder at the center of the Coupler - this protected position means it cannot be contaminated
- > It requires no routine maintenance and works in conjunction with other warning systems such as audible indicators to ensure a safe and easy operation

## TEFRA COUPLER





Hitch Model	Carrier Range in Tons*	Pin Diameter Pick-Up in Inches (mm)	Bottom Frame Width in Inches (mm)	Pin Pick-Up Range in Inches (mm)
TAC30	3 – 4	1.4 – 1.6 (35 – 50)	4.6 (117)	6.4 – 8.5 (162 – 217)
TAC50	5 – 7	1.6 – 2.2 (40 – 55)	5.6 – 7.2 (143 – 183)	8.5 – 10.7 (216 – 272)
TAC70	8 – 9	1.7 – 1.9 (44 – 50)	6.4 – 7.2 (163 – 183)	11 – 14 (279 – 356)
TAC130	10 – 14	2.3 – 2.5 (60 – 65)	8.6 – 9.4 (218 – 238)	13.6 – 17.1 (345 – 435)
TAC160	15 – 18	2.7 – 3.1 (70 – 80)	11 – 11.7 (277 – 298)	15 – 20 (386 – 510)
TAC210	19 – 13	3.1 (80)	10.9 – 11.7 (277 – 298)	15 – 20 (386 – 510)
TAC260	24 – 28	3.1 (80)	11.7 (298)	15 – 20 (386 – 510)
TAC325	29 – 33	3.5 (90)	14.8 (378)	18 – 22.5 (455 – 572)
TAC350	34 – 39	3.5 – 3.9 (90 – 100)	15.75 (400)	20.3 – 25.6 (517 – 650)
TAC450	40 – 50	3.9 – 4.3 (100 – 110)	17.4 (442)	20.3 – 25.6 (517 – 650)

\* **NOTE:** Confirm all carrier and coupler compatibility with FRD USA engineering.

- Tefra couplers in 50 ton/65 ton/75 ton and 100 ton can be made to special order.
- We can also manufacture Mix and Match Tefra couplers to fit any special attachment size.



## Built-in Safety with Redundant Locking Systems

Furukawa's Tefra coupler features a patented safety mechanism that eliminates the need for a manual locking pin. You get better productivity and increased machine utilization, without compromising safety. The coupler can be disengaged only when in the "full curl" position.



# ■ ENCORE RECERTIFICATION PROGRAM

## Features and Benefits:

### MAINTENANCE AS EASY AS I, II OR III.

The new Encore Recertification Program from FRD USA shifts the burden and expense of routine breaker maintenance onto factory-trained FRD technicians and away from overworked, understaffed service departments.

Designed to extend the life of your FRD hydraulic breakers, the unique Encore Recertification Program offers three distinct service levels, each incorporating various maintenance options. From routine tool inspection to complete overhaul, you choose the level that best suits your needs.

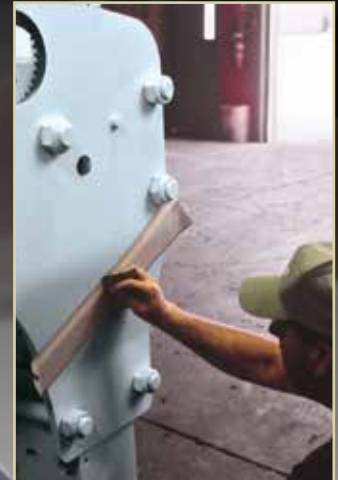
### ADDITIONAL PROGRAM BENEFITS

The Encore Recertification Program offers dealers and their customers even more flexibility with these additional benefits:

- Purchase one program tier, but retain the option to upgrade to the next tier while paying only for the level of service that is performed
- Purchase any additional parts required for proper repair – without additional installation charges

**Encore**  
RECERTIFICATION PROGRAM

## **ENCORE** *Recertification Program*





All tools are cleaned then disassembled for inspection of critical parts.



After disassembly, all parts are inspected for wear to determine replacement needs.



In tiers II and III tools are reassembled to factory specifications and re-painted.



Decals and model identification are applied prior to shipment.



## YOU CHOOSE THE LEVEL THAT BEST SUITS YOUR NEEDS

- Tier I:** Offers a detailed inspection report including digital photographs complete with test firing.
- Tier II:** In addition to the inspection report, tier II includes all seals, a diaphragm, hose whips, four (4) backhead bolt or through bolts (as applicable) and related hardware. We'll even polish the piston and cylinder before reassembly. Your unit will be returned with a three-month warranty, fully assembled with all bolts factory-torqued, all nitrogen chambers properly charged and the breaker painted and decaled.
- Tier III:** The ultimate maintenance package, this level includes all services from tiers I and II, but adds many more features. We'll replace the thrust ring and front cover (if applicable) retainer pin(s), grease fitting, hose whips and all bushings, and provide you with a choice of one standard working steel. In addition, tier III includes a six-month limited warranty and free return freight.

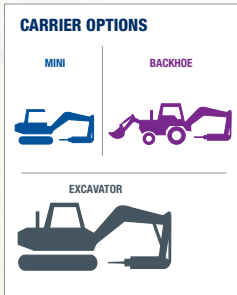
# MECHANICAL THUMBS/PNEUMATIC BREAKERS

## Features and Benefits:

- > Thumbs are equipped with a twist-resistant 'Inverted Y' stiff arm
- > Expanded range of heavy-duty thumbs permits installation on mini-excavators, rubber-tired back-hoes and excavators
- > All steel tines are fabricated with AR400 (abrasion resistant) steel, serrated and gusseted. AR400 is 38% stronger, 46% harder and resists wear better than commonly used T-1 Steel
- > Three versatile, ridged positions to adapt to a variety of working conditions
- > Pins are machined out of hardened steel alloy
- > Overall thumb width never exceeds the carrier's minimum bucket width eliminating potential interference during operation
- > Thumbs fold flush and maintain a low profile when pinned flat against mounting bracket
- > No additional parts required to hold thumb in retracted position



## MT Series





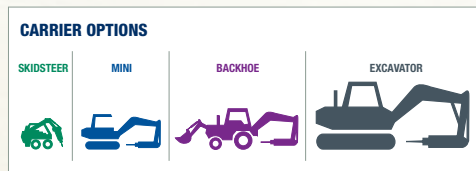
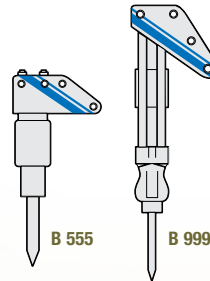
MECH. THUMB	MT 3X10	MT 8X16	MT 16X33HD	MT 33X40	MT 40X55	MT 55X65	MT 65X80	MT 80X120
Carrier Range ( x 1,000 lbs.)	3-10	8-16	16-33	33-40	40-55	55-65	65-80	80-120
Width	8"	12"	18"	18"	24"	30"	34"	36"
Length	28"	40"	48"	52"	58"	62"	63"	73"
Weight (lbs.)	108	371	710	820	996	1410	2452	3105
Pin Diameter	2.00"	2.00"	2.00"	2.00"	2.00"	2.50"	3.00"	3.00"
Tine Thickness	0.50"	0.75"	1.00"	1.00"	1.00"	1.25"	1.50"	2.00"
# of Tines	2	2	3	3	4	4	4	4
Carrier Options	■	■ ■	■	■	■	■	■	■

# B555/B999 AIR RAMS

## Features and Benefits:

- > Automatic valve provides maximum power with a minimum of air consumption
- > Piston impacts tappet not working steel, protecting the piston from damage
- > Air cushions reduce impact action of piston and tappet reducing wear and tear of critical internal parts

BREAKER MODEL	B 555	B 999
<b>Impact Energy Class</b>	<b>500 ft. lbs.</b>	<b>1000 ft. lbs.</b>
Weight in lbs. (kg)	502 (228)	950 (431)
Chuck Size in Inches	2.5 or 3.0	3.5
Blows per minute	600	600
Cu. ft./Min. Required	175	250
Carrier Options		





**Furukawa products sold and serviced by:**



[www.frdusa.com](http://www.frdusa.com)



**CORPORATE HEADQUARTERS**  
711 Lake Street, Kent, OH 44240  
Ph: 330-673-5826  
Fax: 330-677-1616  
Toll Free: 1-800-527-2282

**SOUTHEAST SALES  
AND SERVICE FACILITY**  
155 Dexter Road  
Spartanburg, SC 29303  
Ph: 864-541-0125

**WEST COAST SALES  
AND SERVICE FACILITY**  
7730 Security Circle  
Reno, NV 89506  
Ph: 775-260-7366

Furukawa's policy is one of continual improvement. Specifications may change between printing.

08/24