



Fx770 Qtv

The new, 12,000 Lb Class Fx770 Qtv breaker replaces the popular F70 Qt, and offers unique features and proven design improvements. Even though it requires the same pressure and flow than its predecessor, the Fx770 is designed to produce increased impact as a result of a significant increase in backhead pressure. It is also able to work on a wider range of carriers (48.5-ton to 83-ton).

This breaker is the perfect choice for working in quarries, breaking hard rock or taking on large demolition jobs. Several improvements to the through bolts increase durability, while a replaceable cylinder liner with concentric porting increases tool life. An anti-idle blow feature increases durability and performance. There is a coating applied to the breaker's cylinder liner and valve, which reduces time-consuming maintenance and greatly increases the level of reliability.

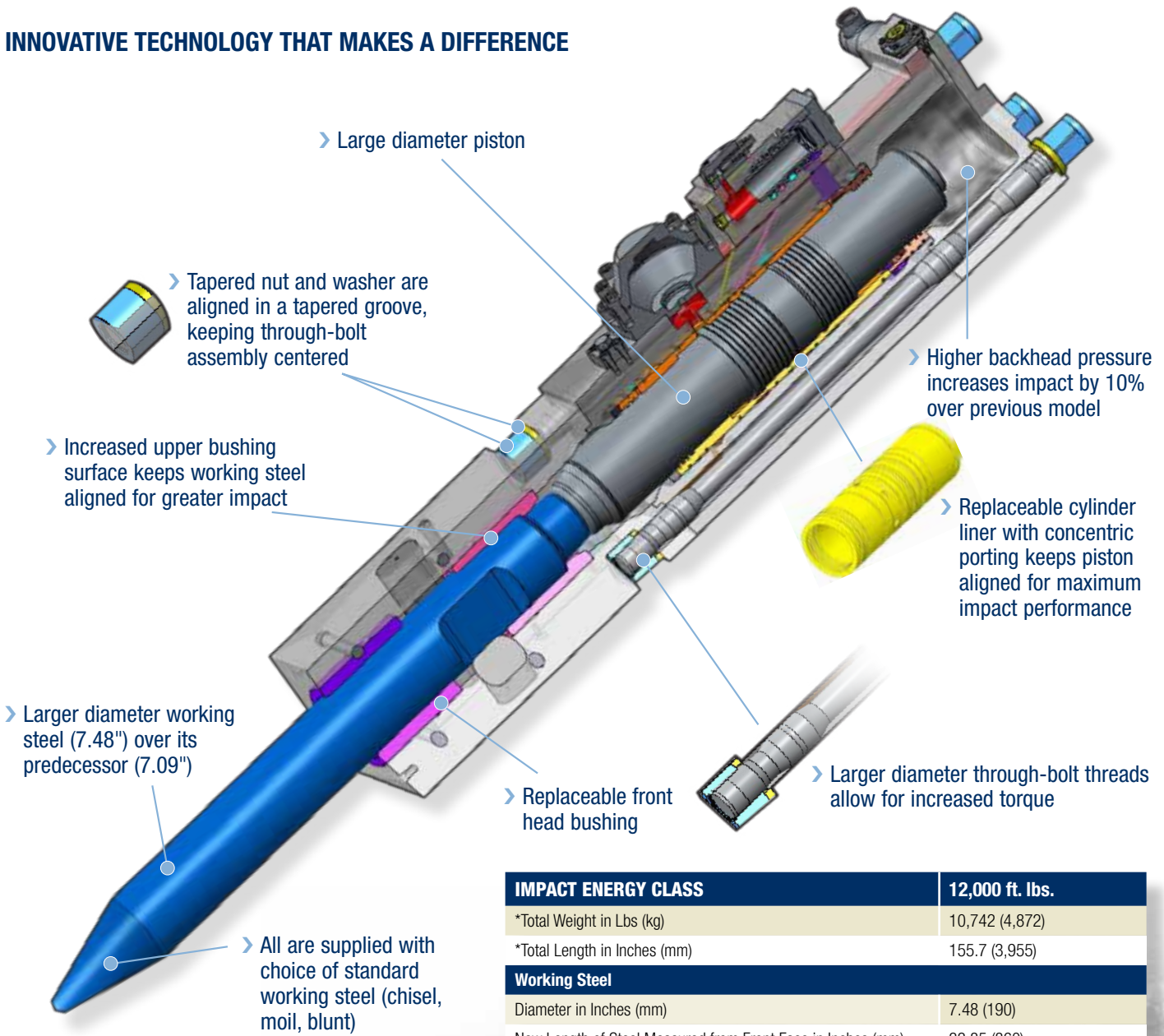
Fx770 Qtv

Features and Benefits:

- Increased carrier range (48.5 to 83 ton) over its predecessor, the F70 Qt (48.5 to 77 ton), allowing use on a wider range of carriers
- Larger diameter working steel (7.48") over the F70 Qt (7.09")
- Higher backhead pressure increases impact by 10% over the F70 Qt even though both operate with the same pressure and flow
- Replaceable cylinder liner with concentric porting keeps piston aligned for maximum impact performance
- Scratch-resistant phosphate coating applied to both valve and cylinder liner improves service life of both components; minimizes opportunity of minor galling
- Design improvements to the through bolts, including larger thread diameters, can increase durability by 20%

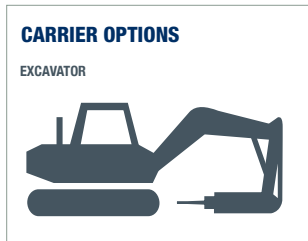


INNOVATIVE TECHNOLOGY THAT MAKES A DIFFERENCE



IMPACT ENERGY CLASS	12,000 ft. lbs.
*Total Weight in Lbs (kg)	10,742 (4,872)
*Total Length in Inches (mm)	155.7 (3,955)
Working Steel	
Diameter in Inches (mm)	7.48 (190)
New Length of Steel Measured from Front Face in Inches (mm)	33.85 (860)
Replaceable Steel Length, Measured from Front Face in Inches (mm)	21.25 (540)
General Specifications	
Adjustable Blows Per Minute (BPM)	250 ~ 330
Acceptable GPM Range (LPM)	66 ~ 90 (250 ~ 340)
Acceptable PSI Range (Bar)	2,320 ~ 2,610 (160 ~ 180)
85 dB(A) @	17 - meters
Recommended Carrier Range in U.S. Tons (tonnes)	48.5 ~ 83 (44 ~ 75)
Carrier Options	■

***Note:** Total weight and total length include standard working steel and universal top cap less mounting pins and bushings.



www.frdusa.com

CORPORATE HEADQUARTERS
711 Lake Street, Kent, OH 44240
Ph: 330-673-5826
Fax: 330-677-1616
Toll Free: 1-800-527-2282

SOUTHEAST SALES AND SERVICE FACILITY
155 Dexter Road
Spartanburg, SC 29303
Ph: 864-541-0125

WEST COAST SALES AND SERVICE FACILITY
7730 Security Circle
Reno, NV 89506
Ph: 775-260-7366