

Fx475 Qtv



Fx475 Qtv

Excavators in the 39-61 ton class are the perfect match for this demolition machine. Whether you're breaking blue granite in the Northeast or reducing oversize in quarries, the Fx475 Qtv hammer improves day-to-day performance, offering less maintenance and downtime, smoother operation, superior strength and the highest level of reliability.

The Fx475 Qtv offers improved durability, with features that include a square, mono-block body design for superior strength. The elimination of thru-bolts also reduces maintenance and failure. A patent pending dust prevention system incorporates grooves to trap contaminants on the upstroke and expel them on the piston down stroke, while a cushion ring acts as a secondary trap. This improves the life of the piston, bushings and working steel.

Operators appreciate performance features that include a new valve design to reduce hydraulic fluid temperatures. A redesigned piston enhances surface contact to working steel, while a larger bushing surface keeps it aligned for greater impact. A replaceable cylinder liner increases tool life and reduces time-consuming maintenance. The unique one-piece enclosure and dampening system reduces noise levels for use in noise sensitive environments. A higher back head pressure and larger piston diameter increases impact performance by 20% over previous models.

All Furukawa hammers come complete with Furukawa's exclusive Pro-Pak for ease of installation. The Pro-Pak includes hose whips, mounting hardware, standard working steel and tool kit with operating manual at no additional charge.



**FxSERIES**

**NO** torquing of Thru-Bolts.  
**NO** broken Thru-Bolts.  
**NO** downtime due to Thru-Bolts.

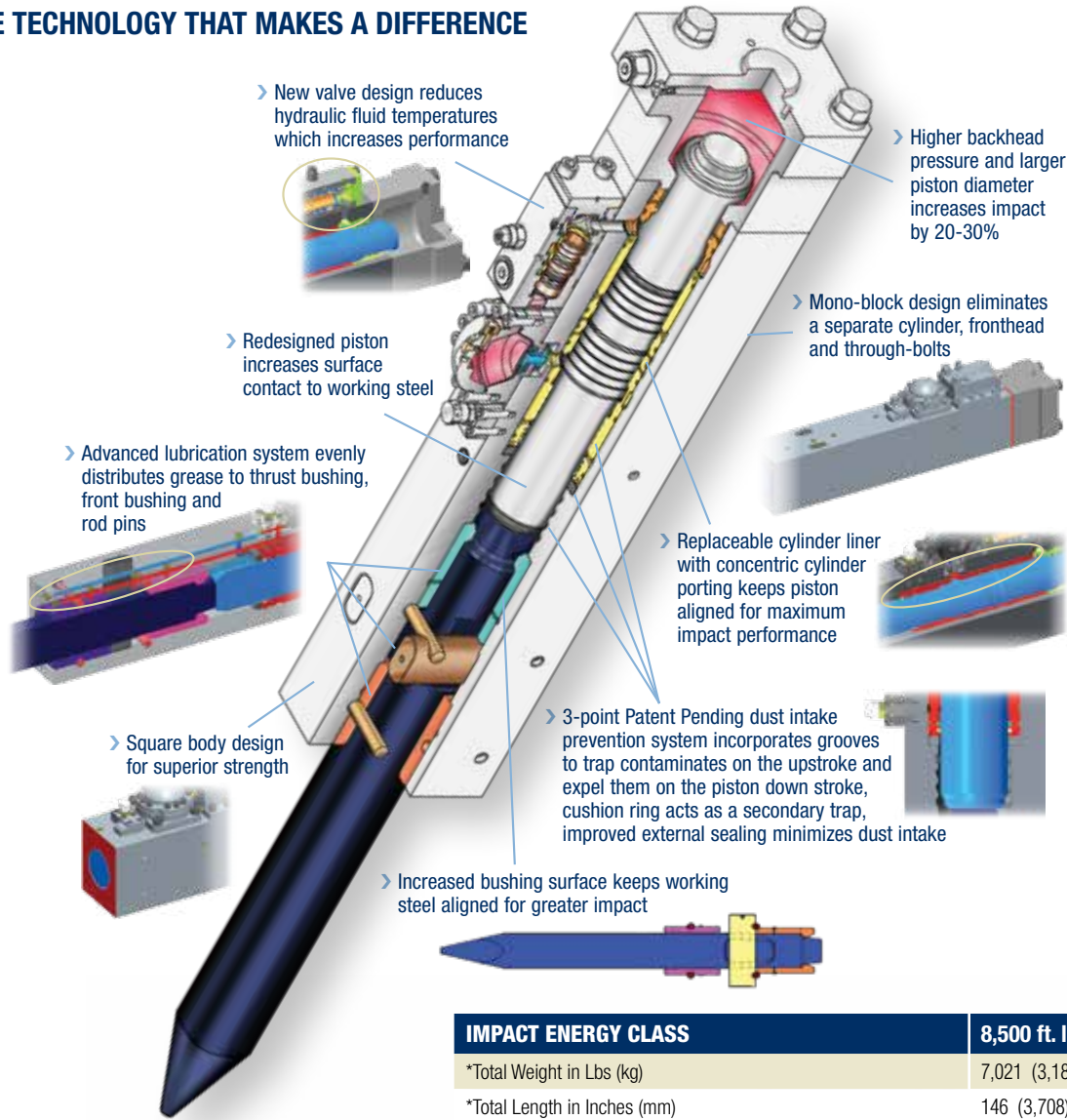
Why? **NO THRU-BOLTS.**

Features and Benefits:

- Increased hydraulic flow range for use on a wider range of carriers
- Mono-block design eliminates a separate cylinder, fronthead and thru-bolts
- Improved Dust Intake Prevention system increases reliability
- Replaceable cylinder liner with concentric porting keeps piston aligned for maximum impact performance
- Improved valve design reduces hydraulic fluid temperatures which increases performance
- Square body design for superior strength
- 3-point sealing system prevents internal contamination
- Redesigned piston increases surface contact to working steel
- Improved dampening system keeps breaker properly secure in cradle to reduce wear
- Qtv cradle for improved protection, sound suppression and dampening
- Increased and improved lubrication to critical components
- Longer thrust bushing for increased internal alignment also insures direct impact with piston

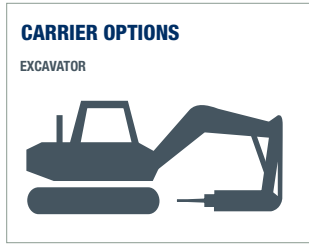


**INNOVATIVE TECHNOLOGY THAT MAKES A DIFFERENCE**



| <b>IMPACT ENERGY CLASS</b>  | <b>8,500 ft. lbs.</b>     |
|---|---------------------------|
| *Total Weight in Lbs (kg)   | 7,021 (3,185)             |
| *Total Length in Inches (mm)                                      | 146 (3,708)               |
| <b>Working Steel</b>  |                           |
| Diameter in Inches (mm)   | 6.69 (170)                |
| New Length of Steel Measured from Front Face in Inches (mm)       | 32.68 (830)               |
| Replaceable Steel Length, Measured from Front Face in Inches (mm) | 20.08 (510)               |
| <b>General Specifications</b>                                     |                           |
| Adjustable Blows Per Minute (BPM)                                 | 250 ~ 350                 |
| Acceptable GPM Range (LPM)  | 53 ~ 79 (200 ~ 299)       |
| Acceptable PSI Range (Bar)  | 2,320 ~ 2,610 (160 ~ 180) |
| 85 dB(A) @  | ~ 22 meters               |
| Recommended Carrier Range in U.S. Tons (tonnes)                   | 39 ~ 61 (35 ~ 55)         |
| Carrier Options   | ■                         |

**\*Note:** Total weight and total length include standard working steel and universal top cap less mounting pins and bushings.



**FRD**  
FURUKAWA  
[www.frdusa.com](http://www.frdusa.com)

**CORPORATE HEADQUARTERS**  
711 Lake Street, Kent, OH 44240  
Ph: 330-673-5826  
Fax: 330-677-1616  
Toll Free: 1-800-527-2282

**SOUTHEAST SALES AND SERVICE FACILITY**  
155 Dexter Road  
Spartanburg, SC 29303  
Ph: 864-541-0125

**WEST COAST SALES AND SERVICE FACILITY**  
7730 Security Circle  
Reno, NV 89506  
Ph: 775-260-7366