



**FURUKAWA ROCK DRILL USA**

711 Lake Street Kent, Ohio 44240 U.S.A. Phone: 330.673.5826 Fax: 330.677.1616

Breaker/Attachment Division

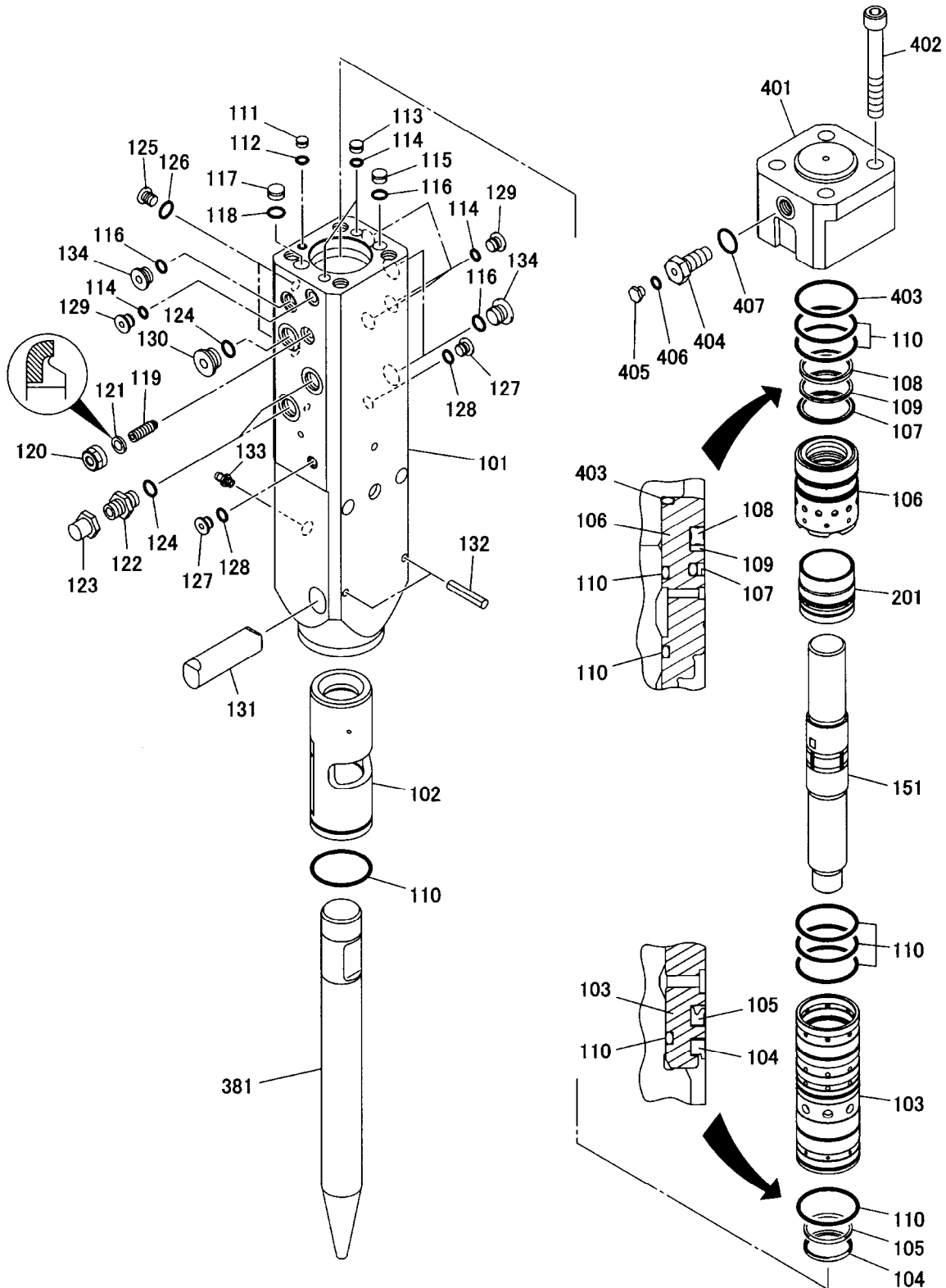
## **SECTION VI**

### **PARTS LIST**

***Fx55 Serial No. 1001 ~***

*9/29/2010  
Section VI - Page # 1*

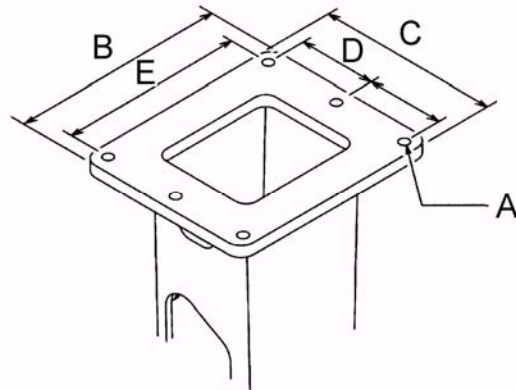
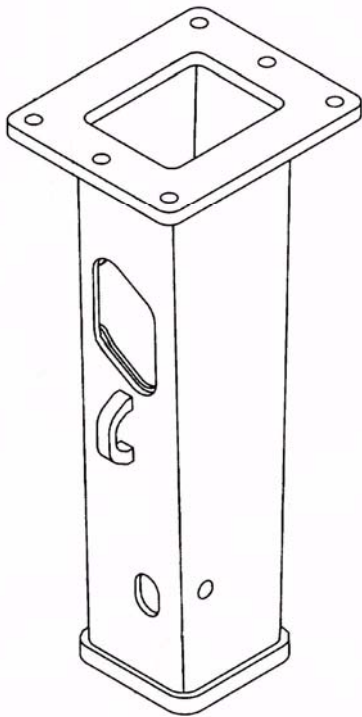
# ***FX55 HYDRARAM PARTS BREAKDOWN***







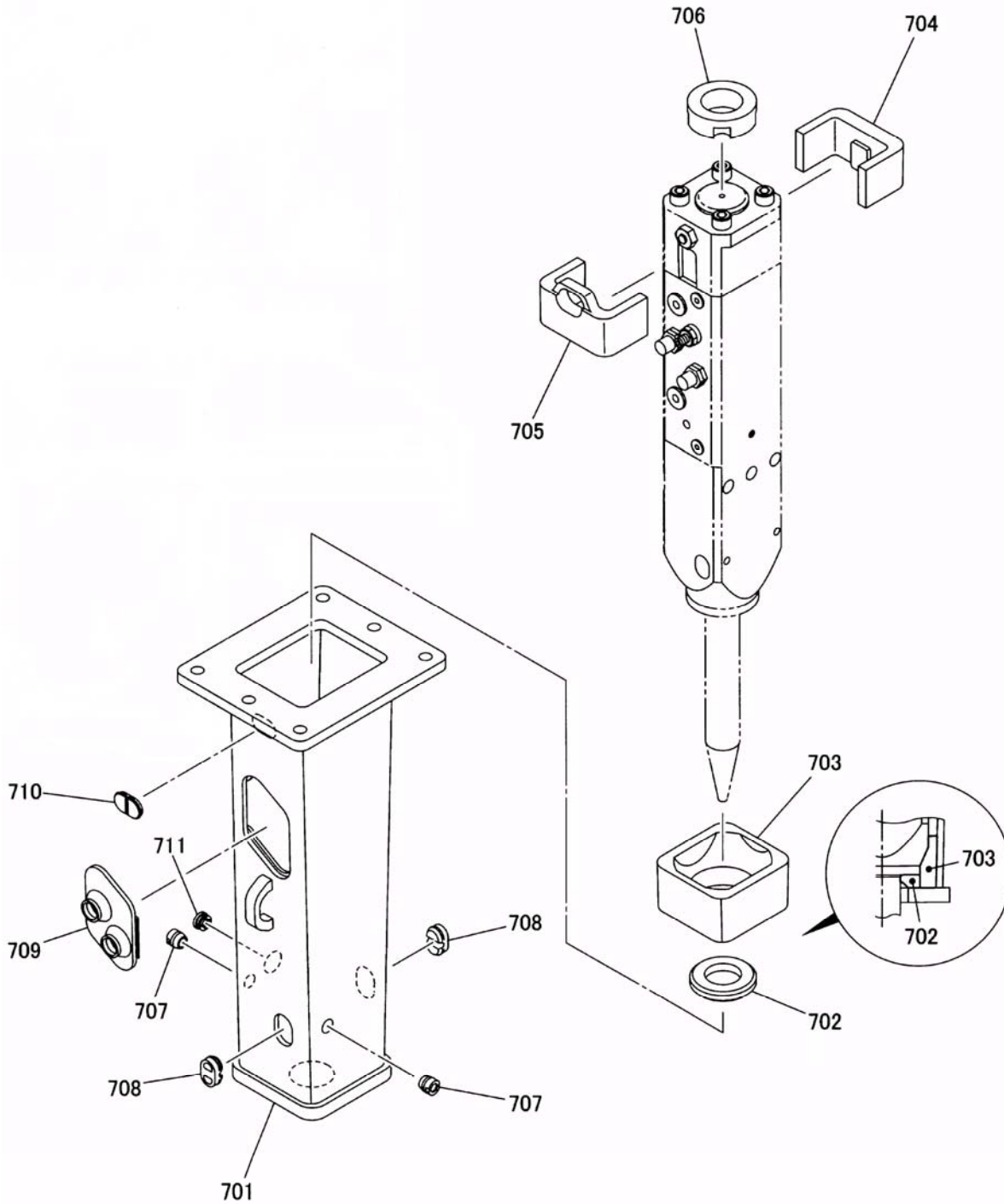
## **T-BOX MOUNTING** **Fx55QT HYDRARAM**



<i>ITEM</i>	<i>PART NUMBER</i>	<i>QUANTITY</i>	<i>DESCRIPTION</i>
1	002309880010US	1	T-Box Weldment

	<u><b>Inch</b></u>	<u><b>Milimeter</b></u>	
A	0.886	22	Bolt Hole Diameter
B	14.921	379	Flange, Long Side
C	13.385	340	Flange, Short Side
D	5.708	145	Center to Center
E	12.913	328	Center to Center

## **DAMPER PARTS LIST** **Fx55QT HYDRARAM CRADLE**

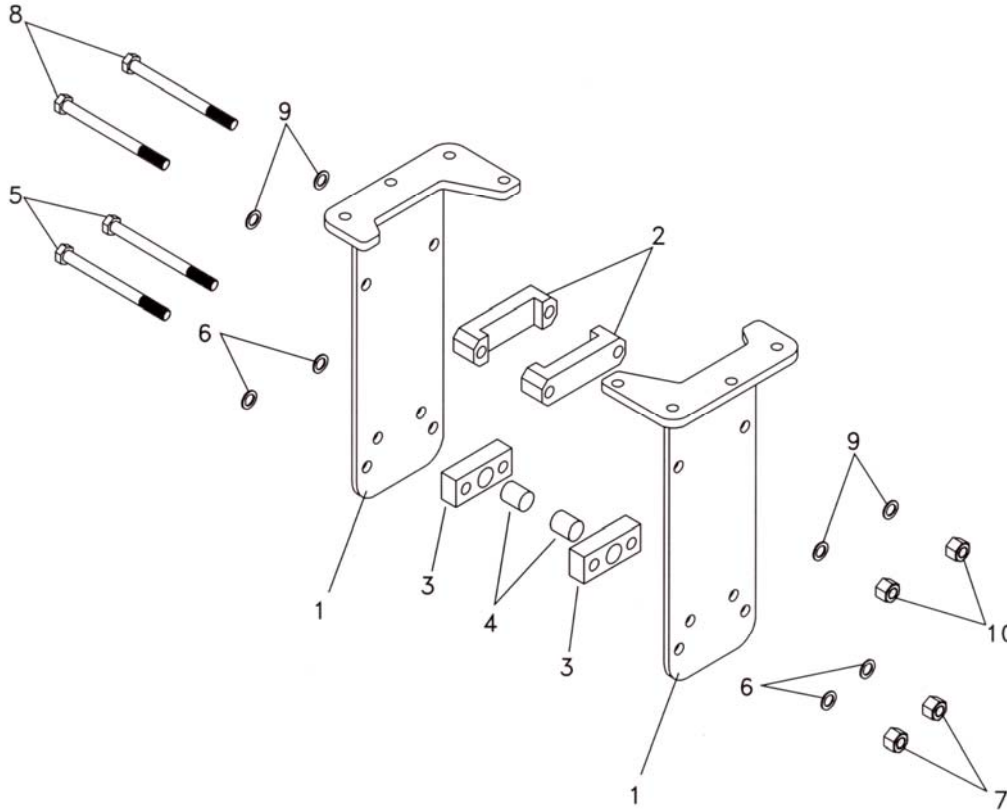


**DAMPER PARTS LIST**  
**Fx55QT HYDRARAM CRADLE**

<i>ITEM</i>	<i>PART NUMBER</i>	<i>QUANTITY</i>	<i>DESCRIPTION</i>
	902309880010US	1	T-Box Assy
701	002309880010	1	T-Box Weldment
702	002309880020	1	Bottom Damper
703	002309880030	1	Front Damper
704	002309880040	1	Back Damper (A)
705	002309880050	1	Back Damper (B)
706	002309880060	1	Top Damper
707	002309880070	2	Dust Plug
708	002308880080	2	Pin Plug
709	002309880080	1	Sound Proof Cover
710	002308880100	1	Dust Plug
711	002200830160	1	Grease Cap



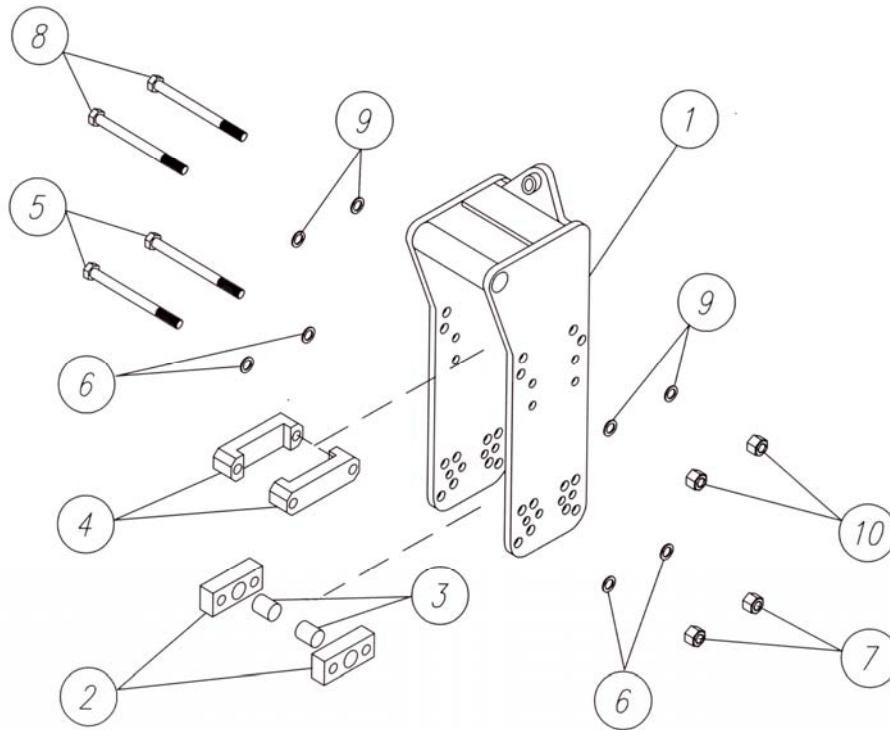
## **FLANGE SIDE PLATE MOUNTING** **Fx55FSP HYDRARAM**



<i>ITEM</i>	<i>PART NUMBER</i>	<i>QUANTITY</i>	<i>DESCRIPTION</i>
1	F50001	2	Flange Style Side Plates
2	FX55017	2	Set Plate "B"
3	FX55016	2	Set Plate "A"
4	FX55018	2	Set Pin
5	F40065	2	7/8"-9 UNC x 11.00" HHCS, Gr. 5
6	7236	4	7/8" Flat Washer
7	10189	2	7/8"-9 UNC Lock Nut
8	F60018	2	1"-8 UNC x 11.00" HHCS, Gr.5
9	6643	4	1" Flat Washer
10	2584	2	1"-8 UNC Locknut

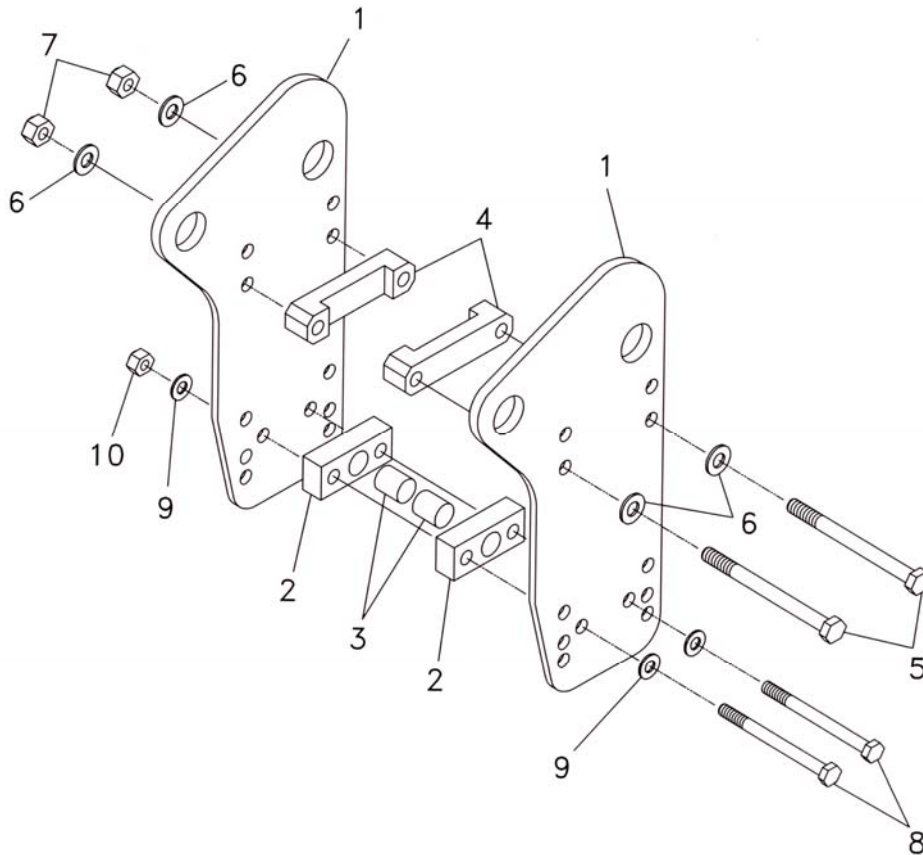


## **CP 027 MOUNTING BRACKET** **Fx55CP HYDRARAM**



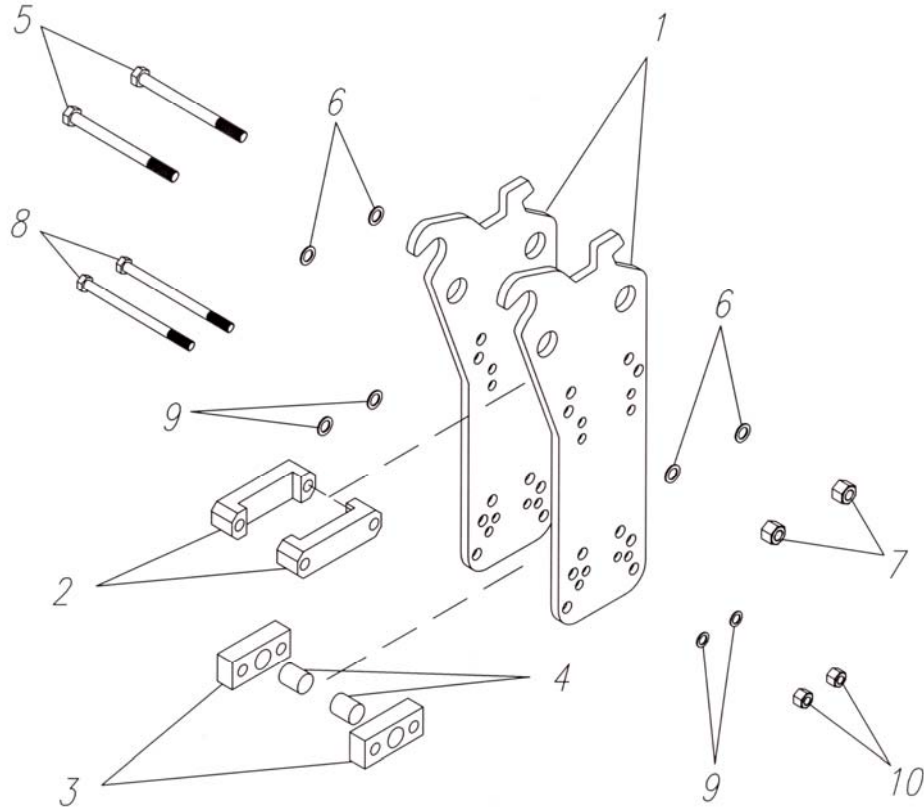
<i>ITEM</i>	<i>PART NUMBER</i>	<i>QUANTITY</i>	<i>DESCRIPTION</i>
1	28401	1	CP Breaker Bracket
2	FX55016	2	Set Plate "A"
3	FX55018	2	Set Pin
4	FX55017	2	Set Pate "B"
5	F40065	2	7/8"-9 UNC x 11.00" HHCS, Gr. 5
6	7236	4	7/8" Flat Washer
7	10189	2	7/8"-9 UNC Lock Nut
8	F60018	2	1"-8 UNC x 11.00" HHCS, Gr.5
9	6643	4	1" Flat Washer
10	2584	2	1"-8 UNC Locknut

## MINI-EXCAVATOR SIDE PLATE MOUNTING Fx55ME HYDRARAM



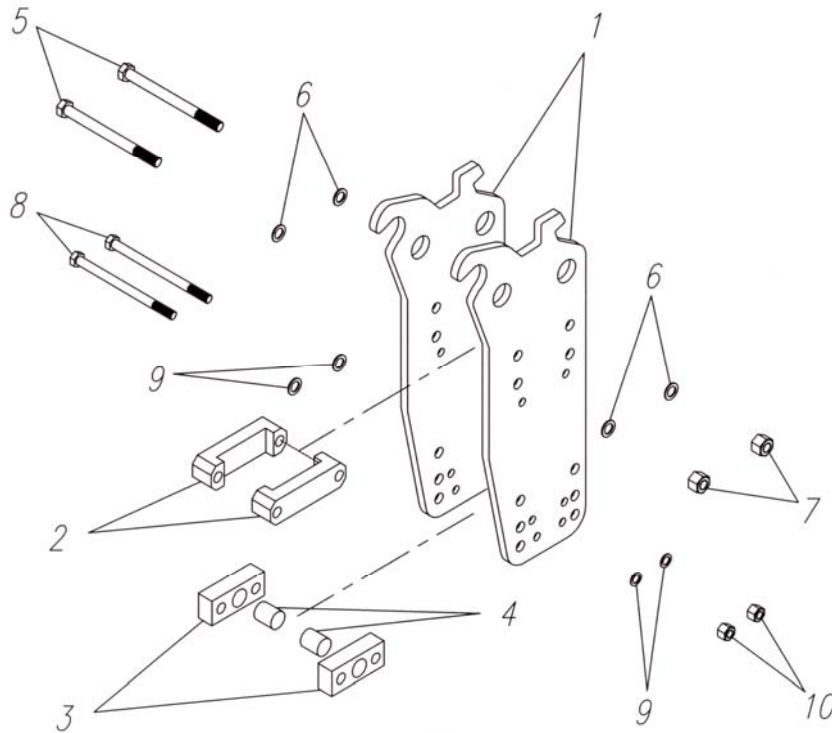
ITEM	PART NUMBER	QUANTITY	DESCRIPTION
1	28216	2	ME Side Plate
2	FX55016	2	Set Plate "A"
3	FX55018	2	Set Pin
4	FX55017	2	Set Plate "B"
5	F60018	2	1"-8 x 11" HHCS Gr. 5
6	6643	4	1" Flat Washer
7	2584	2	1"-8 Lock Nut
8	F40065	2	7/8"-9 X 11" HHCS Gr. 5
9	7236	4	7/8" Flat Washer
10	10189	2	7/8"-9 Lock Nut

## **WB 27/35 SIDE PLATE MOUNTING** **Fx55WBME HYDRARAM**



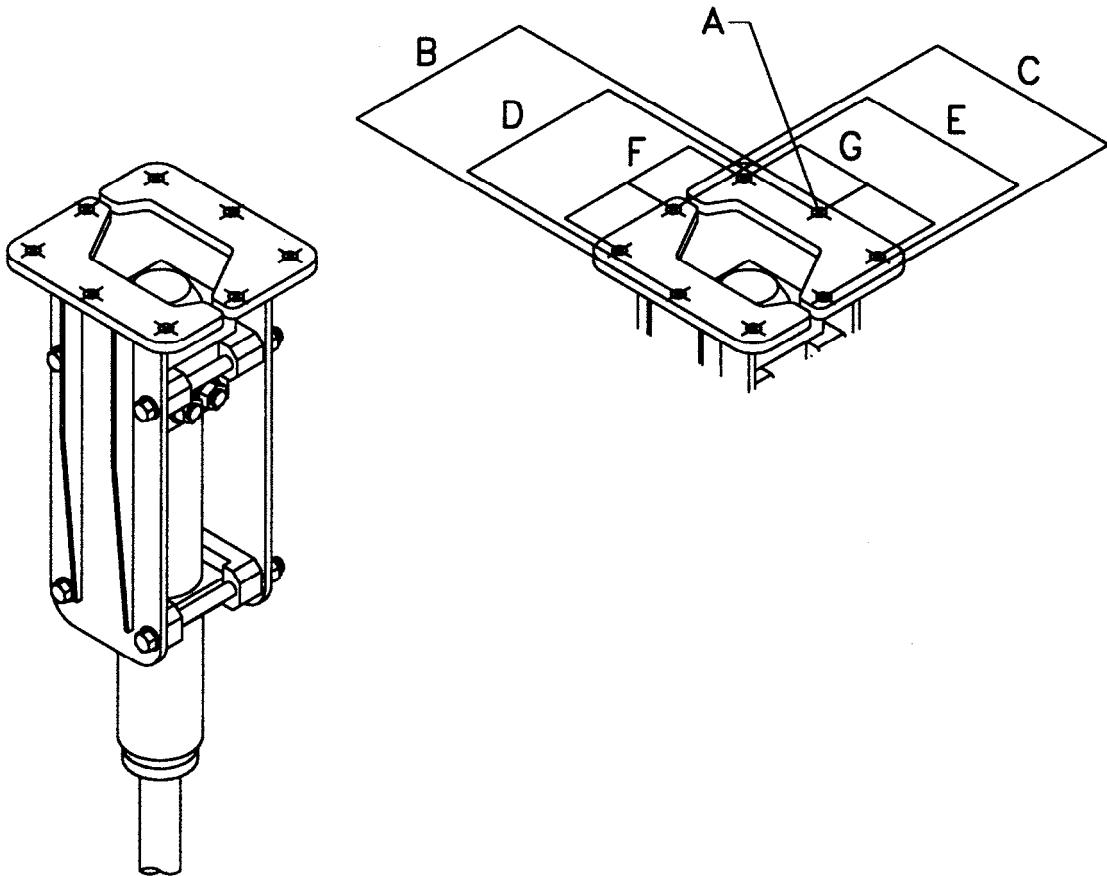
<i>ITEM</i>	<i>PART NUMBER</i>	<i>QUANTITY</i>	<i>DESCRIPTION</i>
1	F40076	2	WBME Side Plate
2	FX55017	2	Set Plate "B"
3	FX55016	2	Set Plate "A"
4	FX55018	2	Set Pin
5	F60018	2	1"-8 x 11" HHCS Gr. 5
6	6643	4	1" Flat Washer
7	2584	2	1"-8 Lock Nut
8	F40065	2	7/8"-9 x 11" HHCS Gr. 5
9	7236	4	7/8" Flat Washer
10	10189	2	7/8"-9 Lock Nut

## **WB 50 SIDE PLATE MOUNTING** **Fx55WB50ME HYDRARAM**



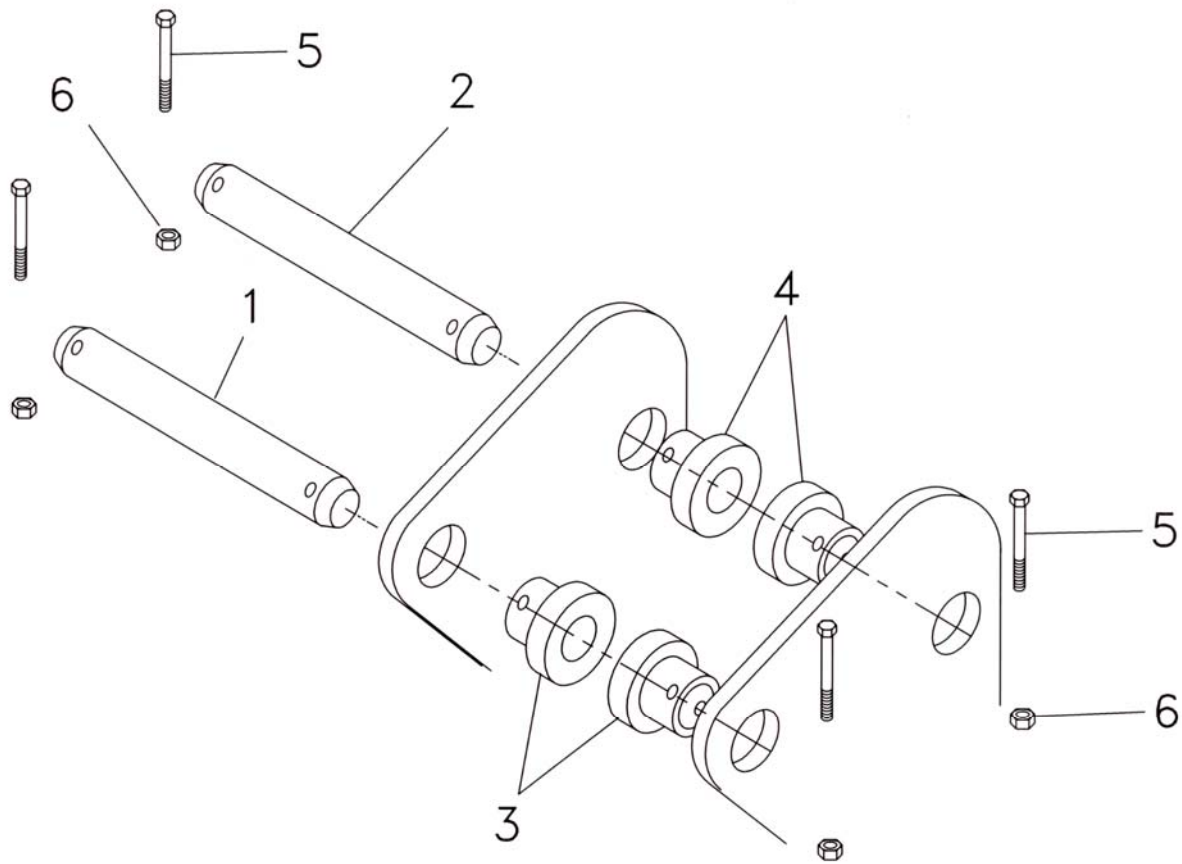
ITEM	PART NUMBER	QUANTITY	DESCRIPTION
1	F40078	2	WB50ME Side Plate
2	FX55026	2	Set Plate "B"
3	FX55024	2	Set Plate "A"
4	FX55025	2	Set Pin
5	18498	2	1"-8 x 12" HHCS Gr. 5
6	6643	4	1" Flat Washer
7	2584	2	1"-8 Lock nut
8	FX55027	2	7/8"-9 x 12" HHCS Gr. 5
9	7236	4	7/8" Flat Washer
10	10189	2	7/8"-9 Lock Nut

**FLANGE SIDE PLATE MOUNTING**  
**Fx55FSP HYDRARAM**



	<u>Inch</u>	<u>Milimeter</u>	
A	0.886	22	Bolt Hole Diameter
B	14.921	379	Flange, Long Side
C	14.921	379	Flange, Short Side
D	12.913	328	Center to Center
E	12.913	328	Center to Center
F	6.457	164	Center to Center
G	6.457	164	Center to Center

**MOUNTING PIN KIT FOR**  
**Fx55ME AND Fx55WBME VERSIONS**





# **MOUNTING PIN KIT FOR Fx55ME AND Fx55WBME VERSIONS**

## **Serial Number**

Base Machine Make: \_\_\_\_\_

Base Machine Model: \_\_\_\_\_

Dipperstick Pin Diameter: \_\_\_\_\_

Link Pin Diameter: \_\_\_\_\_

Dipperstick Width: \_\_\_\_\_

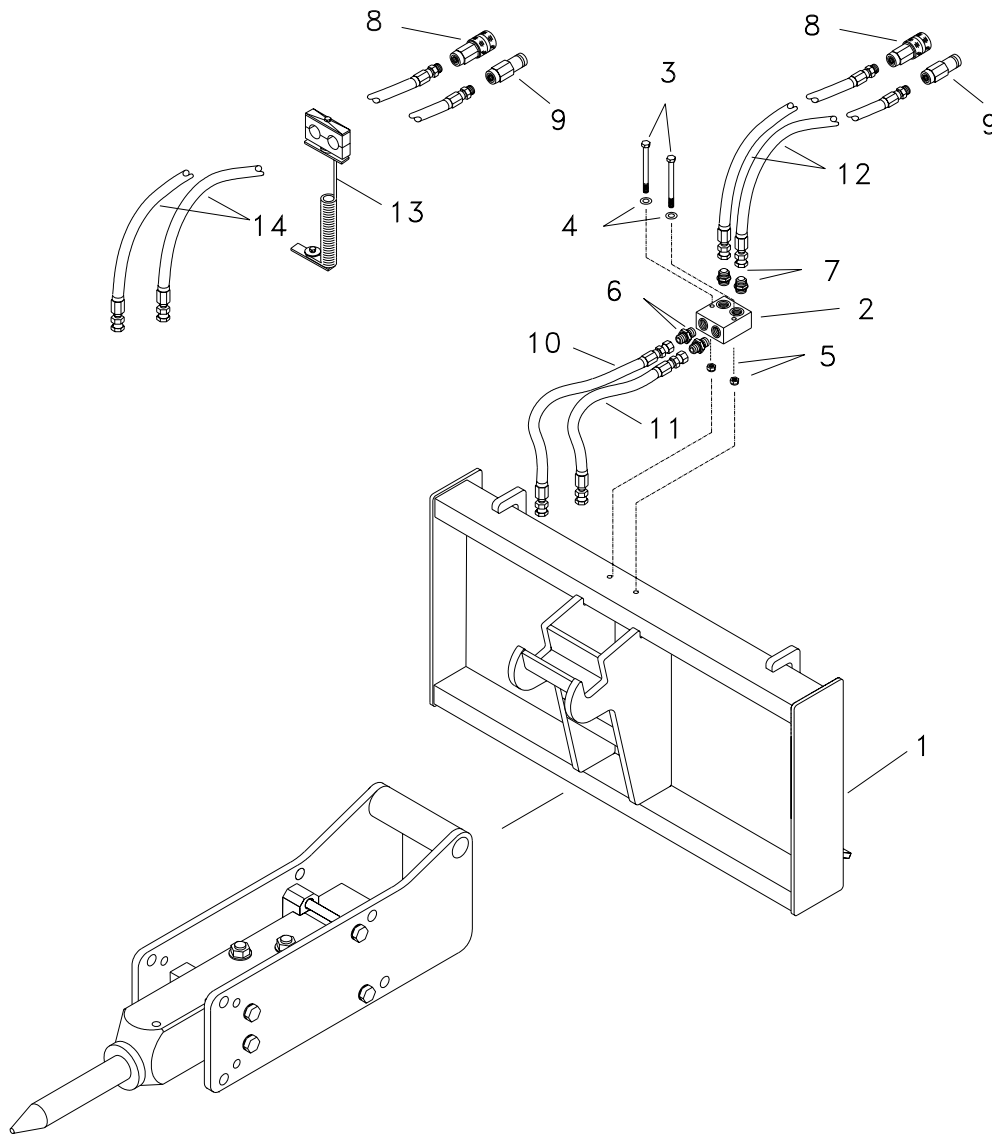
Link Pin Width: \_\_\_\_\_

**MOUNTING KIT PART NO:** \_\_\_\_\_

Consisting of the following:

<i>ITEM</i>	<i>PART NUMBER</i>	<i>QUANTITY</i>	<i>DESCRIPTION</i>
1	_____	1	_____ Dia. Mounting Pin x 17" Long
2	_____	1	_____ Dia. Mounting Pin x 17" Long
3	_____	2	_____ Dia. Mounting Bushing x _____ lg.
4	_____	2	_____ Dia. Mounting Bushing x _____ lg.
5	<u>K06422</u>	2	1/2" -13 x 5" Bolt
6	<u>K07228</u>	2	1/2" -13 UNC Locknut

## **CP UNIVERSAL QUICK ATTACH BRACKET** **FOR Fx55 HYDRARAMS**



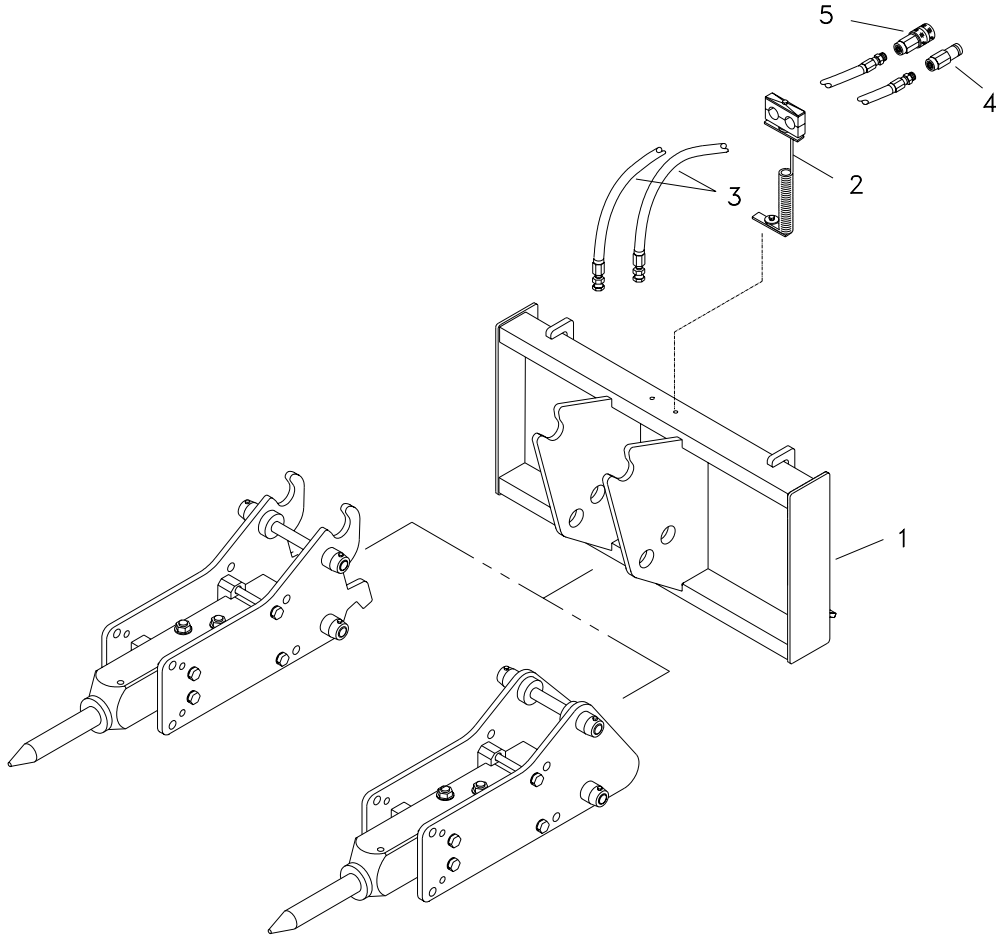




## **CP UNIVERSAL QUICK ATTACH BRACKET** **PARTS LIST**

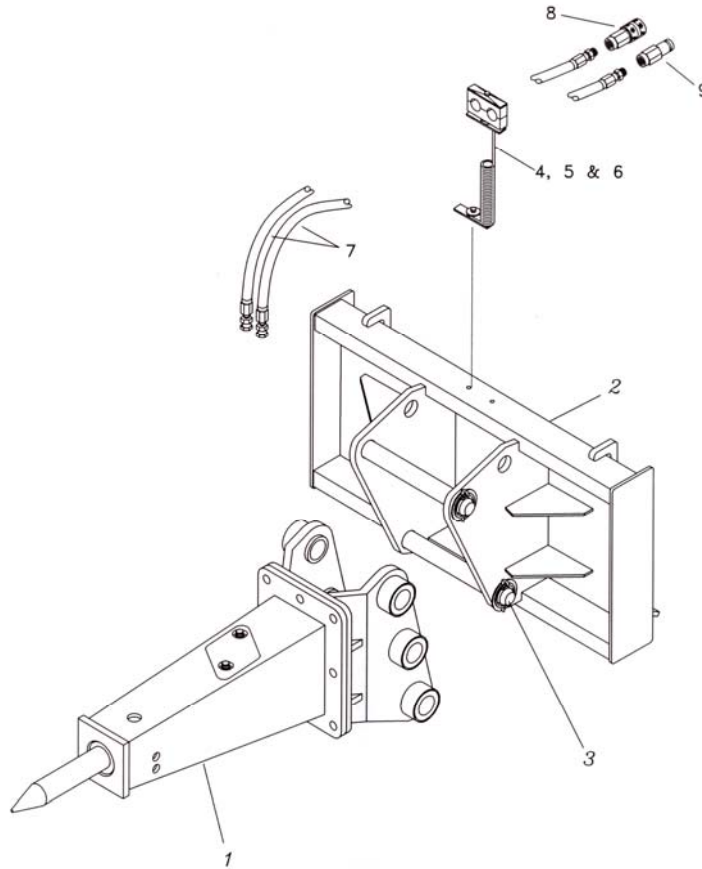
<i>ITEM</i>	<i>PART NUMBER</i>	<i>QUANTITY</i>	<i>DESCRIPTION</i>
1	26750	1	CP Universal Quick Attach Bracket
2	19945	1	Control Valve Block
3	19946	2	3/8"-16 x 5.00" Lg HHCS
4	7241	2	3/8" Flat Washer
5	12272	2	3/8"-16 Locknut
6	15416	2	10-10 Adapter
7	15051	2	10-12 Adapter
8	19114	1	Quick Disconnect - Female
9	19115	1	Quick Disconnect - Male
10		1	Hose Assembly
11		1	Hose Assembly
12	28260	2	Hose Whip
13	14951	1	Spring Hose Guide
14	19515	2	Hose Whip

**ME TWO-POSITION (PIN-ON)**  
**UNIVERSAL QUICK ATTACH BRACKET**  
**FOR Fx55 HYDRARAMS**



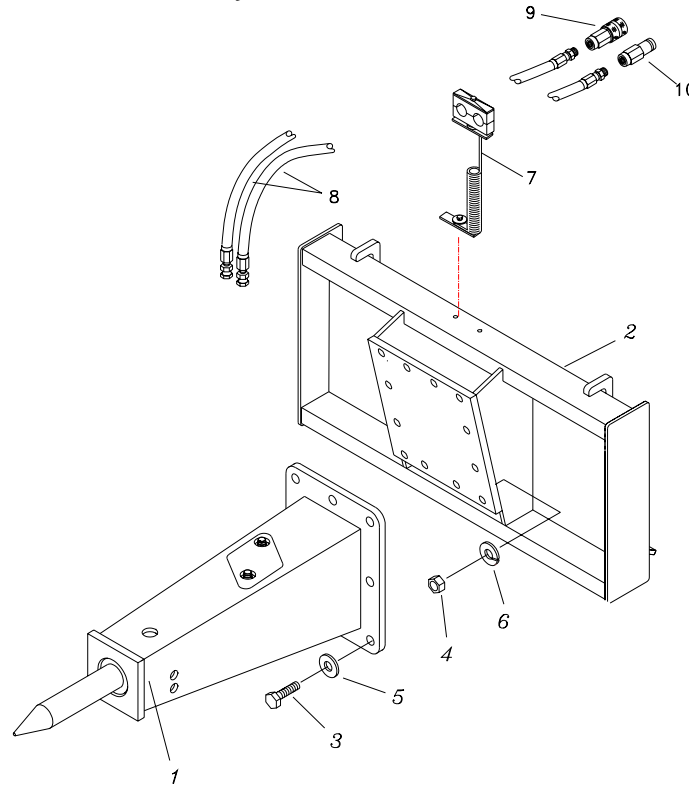
ITEM	PART NUMBER	QUANTITY	DESCRIPTION
1	28208	1	Universal Quick Attach Bracket
	26796	---	Quick Attach Bracket for ME50 Series
2	14951	1	Spring Hose Guide
3	19515	2	Whip Hose
4	19115	1	Quick Disconnect (Male)
5	19114	1	Quick Disconnect (Female)

# **TWO-POSITION (PIN-ON)** **UNIVERSAL QUICK ATTACH BRACKET** **FOR Fx55 HYDRARAMS**



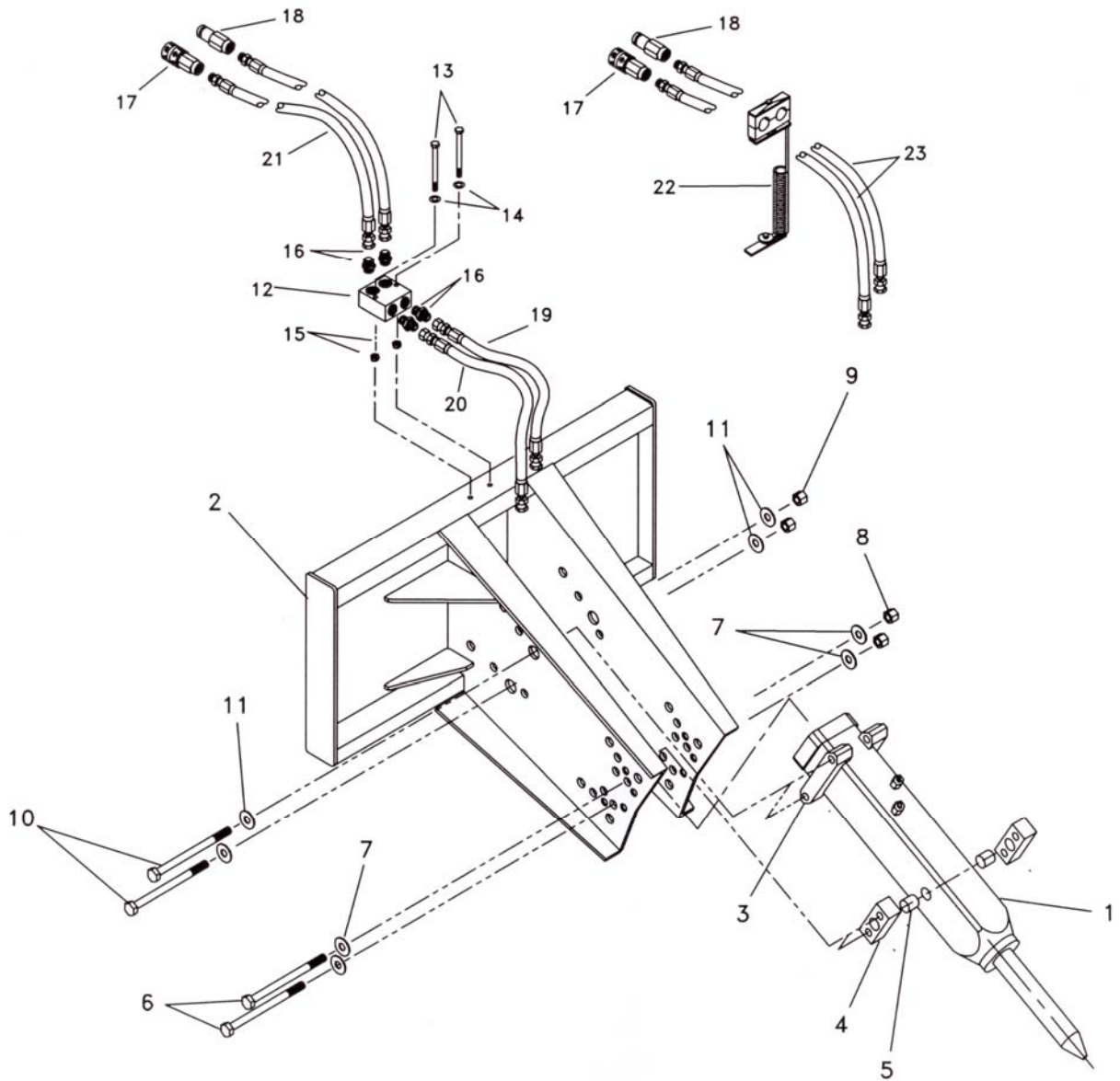
ITEM	PART NUMBER	QUANTITY	DESCRIPTION
1	Fx55QT or FSP	1	Breaker
2	26666	1	"Universal Quick Attach Bracket
3	KM26666-F5	1	Mounting Kit
4	14951	1	Hose Bracket
5	6406	1	Nut
6	6401	1	Bolt
7	19515	2	Hose Whip
8	19114	1	Female Quick Disconnect
9	19115	1	Male Quick Disconnect

# **BOLTED ONE-PIECE RIGID QUICK ATTACH BRACKET** **For Fx55QT HYDRARAM**



ITEM	PART NUMBER	QUANTITY	DESCRIPTION
1	Fx55QT or FSP	1	HydraRam, T-Box or Flange Style*
2	26670	1	Universal Quick Attach Bracket
	26672	---	Quick Attach Bracket for Case Unloaders
3	F430403	8	3/4" - 10 UNC Bolt x 3 1/4" Long (Grade 8)
4	02025	8	3/4" - 10 UNC Nut
5	10278	8	3/4" Hardened Washer
6	10194	8	3/4" Lock Washer
7	14951	1	Spring Hose Guide
8	19611	2	Whip Hose, 100"
9	19114	1	Quick Disconnect (Female)
10	19115	1	Quick Disconnect (Male)

**OPEN STYLE ONE-PIECE RIGID**  
**QUICK ATTACH BRACKET**  
**For Fx55SS HYDRARAM**





**OPEN STYLE ONE-PIECE RIGID**  
**QUICK ATTACH BRACKET**  
**For Fx55SS HYDRARAM**

<i>ITEM</i>	<i>PART NUMBER</i>	<i>QUANTITY</i>	<i>DESCRIPTION</i>
1	Fx55B	1	Hammer, Bare
2	26660	1	Universal Quick Attach Bracket
	26661	---	Quick Attach Bracket for Case Unloaders
3	FX55017	2	Set Plate (B)
4	FX55016	2	Set Plate (A)
5	FX55018	2	Set Pin
6	10188	2	7/8"-9 UNC x 10 1/2" HHCS Gr. 5 NC Lock Nut
7	7236	4	7/8" Flat Washer
8	10189	2	7/8"-9 UNC Lock Nut
9	2584	2	1"-8 UNC NC Lock Nut
10	18155	2	1"-10 UNC x 10 1/2" Hex Head Bolts
11	6643	4	1" Flat Washer
12	19945	1	Control Valve
13	19946	2	3/8"-16 x 5.00" LG HHCS
14	7241	2	3/8" Flat Washer
15	12272	2	3/8" Lock Nut
16	15416	4	Adapter
17	19115	1	Quick Disconnect-Female
18	19114	1	Quick Disconnect-Male
19		1	Hose Assembly
20		1	Hose Assembly
21	28280	2	Hose Whip
22	14951	1	Spring Hose Guide
23	19611	2	Hose Whip

## **SERVICE TOOL KIT**

***P/N BMX5590001***

Furukawa Rock Drill USA includes a tool kit with every new hydraulic breaker. This tool kit contains many of the special tools and wrenches required to perform normal maintenance or repairs on the breaker. This is a basic tool kit, and is by no means complete or comprehensive, but it does contain some specialized tools, and wrench sizes not commonly found in the field. The following illustration depicts a typical tool kit and its contents:

