



Built-in versatility and increased performance

These dependable hammers are available in a variety of mounting configurations enabling them to be easily attached to mini-excavators, skid-steer loaders and rubber-tired backhoes. Performance features and mounting options make these hammers ideal for site preparation, foundation removal, road repair, driveway and sidewalks or pedestrian bridges.



The unique mono-block design is a result of years of engineering refinement and field experience. Two moving parts simplifies the hammer operation and reduces the chance of downtime. The advanced hydraulic circuit provides increased flow to the valve and piston, resulting in faster cycle times, increased tool penetration and more productivity per hour than on previous models. There are no Through-bolts to constantly torque or replace and the front wear bushing is easily replaced so your hammer is always in perfect working condition. The wider oil flow range is an example of the hammers superior design, allowing for faster striking speeds and the ability to be used on a wider range of carriers. The nitrogen charged backhead increases the impact energy maximizing hammer production.

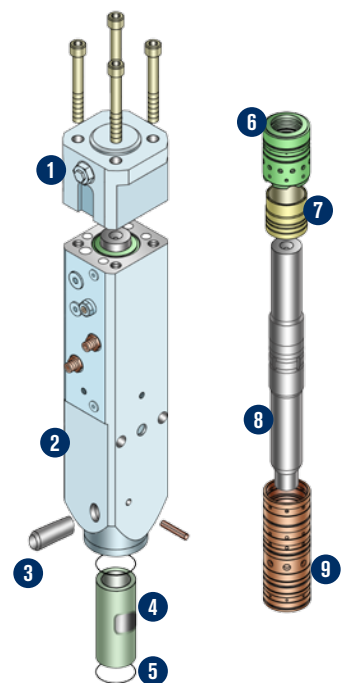
In the rare event that maintenance is needed, the Fx Series has been designed with replaceable cylinder liners saving maintenance cost and downtime.

Features and Benefits:

- Mono-block design with only two moving parts reduces maintenance
- No Through-bolts to maintain
- No Diaphragm to replace
- Replaceable front wear bushing keeps tools in peak performance
- Wide oil flow range for fast, hard-hitting performance and more carrier options
- A variety of mounting options that can accommodate any carrier or application
- A wide variety of working steels
- Long front head bushing keeps steel in proper alignment for maximum service life
- Oval retaining pin for increased steel contact and double service life



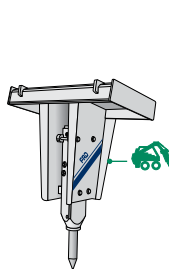
IMPACT ENERGY "CLASS"	Fx45 - 550 ft lb	Fx55 - 800 ft lb
Energy/Min increase over previous F-Series	74%	81%
Weight in lbs (kg)*		
SS configuration	784 (356)	840 (381)
FSP configuration**	606 (275)	714 (324)
Qt configuration**	550 (250)	720 (327)
Length in inches (mm)*		
SS configuration	57.5 (1461)	61 (1549)
FSP configuration**	54 (1372)	60 (1524)
Qt configuration**	52.75 (1340)	57.5 (1461)
Working Steel***		
Diameter in inches (mm)	2.36 (60)	2.68 (68)
Replaceable length measured from fronthed in inches (mm)	9.5 (240)	10 (250)
General Specifications		
Blows per minute (variable)	600 ~ 1100	500 ~ 1000
Oil flow range gpm (lpm)	7.9 ~ 14.8 (30 ~ 56)	10.5 ~ 19 (40 ~ 72)
Operating pressure psi (MPa)	1740 ~ 2320 (12 ~ 16)	1740 ~ 2320 (12 ~ 16)
Qt configuration; 85 dB(A) @	7.5m	8.0m
Recommended Carrier Range in U.S. tons	2.75 ~ 6.1	4.4 ~ 7.7
Carrier Options		



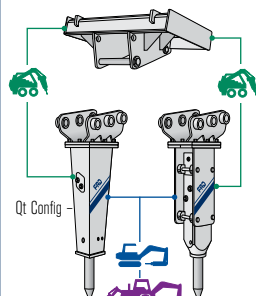
1. Back Head
2. Mono-Block Cylinder
3. Oval Retainer Pin
4. Front Bushing
5. Top & Bottom O-Rings
6. Seal Retainer
7. Valve
8. Piston
9. Cylinder Liner

Notes * Weights and lengths for all configurations include standard Working Steel (less mounting & Hose Whips)
 ** Weights and lengths for FSP's & Qt's include a Universal Top Cap (less mounting & Hose Whips)
 *** All working steels are interchangeable with the previous F-Series

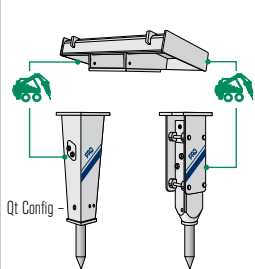
MOUNTING OPTIONS



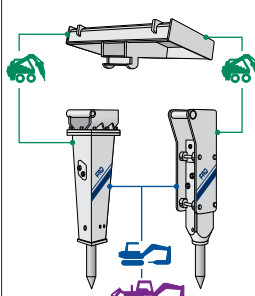
Breaker shown as "SS"



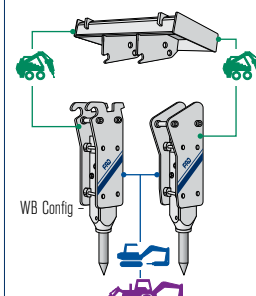
Breaker shown as "Qt" & "FSP" with 2-position pin on Quick-Attach Bracket



Breaker shown as "Qt" & "FSP" with bolt-on Quick-Attach Bracket



Breaker shown as "CP" options with adapting Quick-Attach Bracket



Breaker shown as "WB" & "ME" with 2-position pin on Quick-Attach Bracket

CARRIER OPTIONS

COMPACT
UTILITY
LOADER



MINI
SKIDSTEER



SKIDSTEER



MINI



BACKHOE



EXCAVATOR



www.kentdemolition.com

CORPORATE HEADQUARTERS
 711 Lake Street Kent, OH 44240
Ph: 330-673-5826
Fax: 330-677-1616
Toll Free: 1-800-527-2282

**SOUTHEAST SALES
AND SERVICE FACILITY**
 155 Dexter Road
 Spartanburg, SC 29303
Ph: 864-541-0125