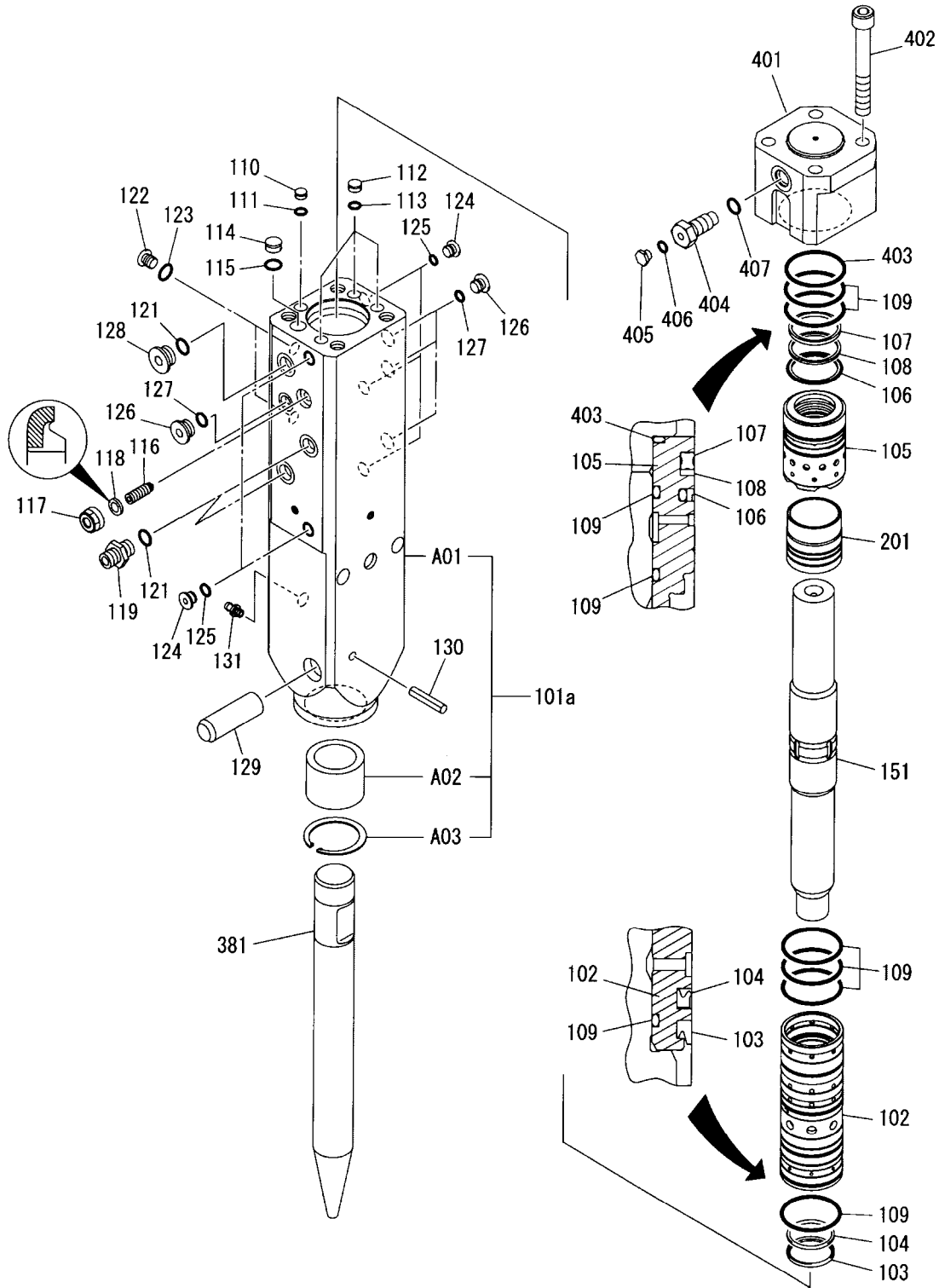




SECTION VI

PARTS LIST

Fx35 HYDRARAM PARTS BREAKDOWN



Fx35 Serial No. 1001 ~ & up



Fx35 HYDRARAM PARTS BREAKDOWN

<u>ITEM</u>	<u>PART NUMBER</u>	<u>QTY</u> <u>Y</u>	<u>DESCRIPTION</u>	<u>ITEM</u>	<u>PART NUMBER</u>	<u>QTY</u>	<u>DESCRIPTION</u>
101a	002307100010	1	Cylinder Assy	123	16001100008	2	O-Ring [/S]
A01		[1]	Cylinder	124	08489102000	5	GPF Plug
A02	HB3R20103	[1]	Front Bushing	125	16001100011	5	O-Ring [/S]
A03	26402000070	[1]	Snap Ring	126	08489103000	4	GPF Plug
102	002307100030	1	Cylinder Liner	127	16001100014	4	O-Ring [/S]
103	HB3R10106	1	Dust Seal [/S]	128	08489104000	1	GPF Plug
104	HB3R10107	1	U-Packing [/S]	129	F320206	1	Rod Pin
105	002307100041	1	Seal Retainer	130	15403710060	1	Spring Pin
106	002307100050	1	Step Seal [/S]	131	17031200000	1	Grease Nipple
107	002307100060	1	Quad Ring [/S]	151	002307110010	1	Piston
108	002307100070	1	Back-Up Ring [/S]	201	002307130011	1	Valve
109	16102100070	6	O-Ring [/S]	381	F325111	1	Blunt
110	HB2R10120	1	Plug [/S]	381	F325114	1	Chisel
111	16001110010	1	O-Ring [/S]	381	F325115	1	Moil
112	HB2R10122	3	Plug [/S]	401	002307300010	1	Back Head
113	16001100012	3	O-Ring [/S]	402	10203218150	4	Socket Bolt
114	F210220	1	Plug [/S]	403	16102100070	1	O-Ring [/S]
115	16001100016	1	O-Ring [/S]	404	HB15G30103	1	Charge Valve
116	F410231	1	Adjuster	405	HB20G30109	1	Plug
117	F410233	1	Seal Nut	406	16001100006	1	O-Ring [/S]
118	HB1G10532	1	Seal Washer [/S]	407	16001100018	1	O-Ring [/S]
119	15287	2	Port Adapter	*	902307920010	1	Seal Kit
121	16001100018	3	O-Ring [/S]				
122	08489101000	2	GPF Plug				

[] Quantities Indicates items included with prior assembly.
 [/S] Items marked Option /S are included in the 902307920010 Seal Kit
 (Refer to Section VII for Seal Kit Details)

Fx35 Serial No. 1001 ~ & up



FURUKAWA ROCK DRILL USA

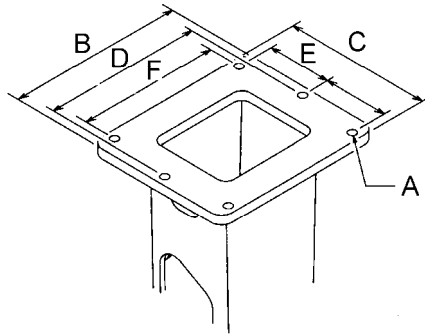
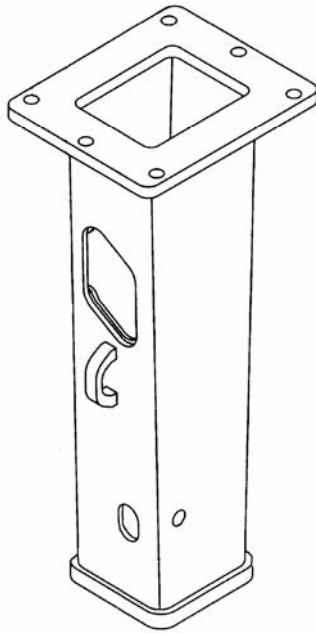
711 Lake Street Kent, Ohio 44240 U.S.A. Phone: 330.673.5826 Fax: 330.677.1616

Breaker/Attachment Division

NOTES:

Lined area for handwritten notes, consisting of 25 horizontal dashed lines.

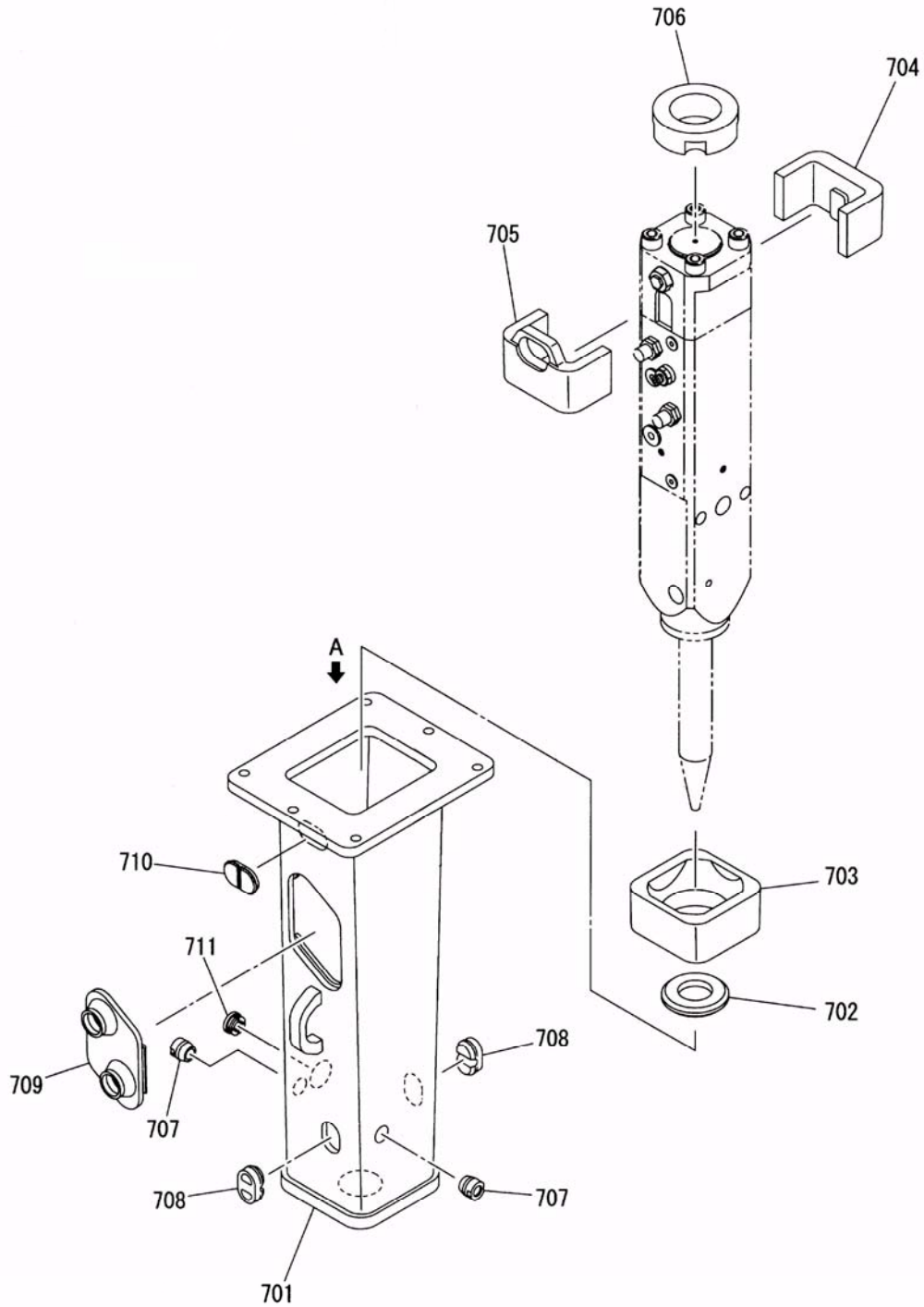
T-BOX MOUNTING Fx35QT HYDRARAM



<i>ITEM</i>	<i>PART NUMBER</i>	<i>QUANTITY</i>	<i>DESCRIPTION</i>
1	002307880010	1	T-Box Weldment

	<u>Inch</u>	<u>Milimeter</u>	
A	0.708	18	Bolt Hole Diameter
B	12.52	318	Flange, Long Side
C	10.63	270	Flange, Short Side
D	11.18	284	Center to Center
E	4.65	118	Center to Center
F	10.08	256	Center to Center

DAMPER PARTS LIST
Fx35QT HYDRARAM CRADLE



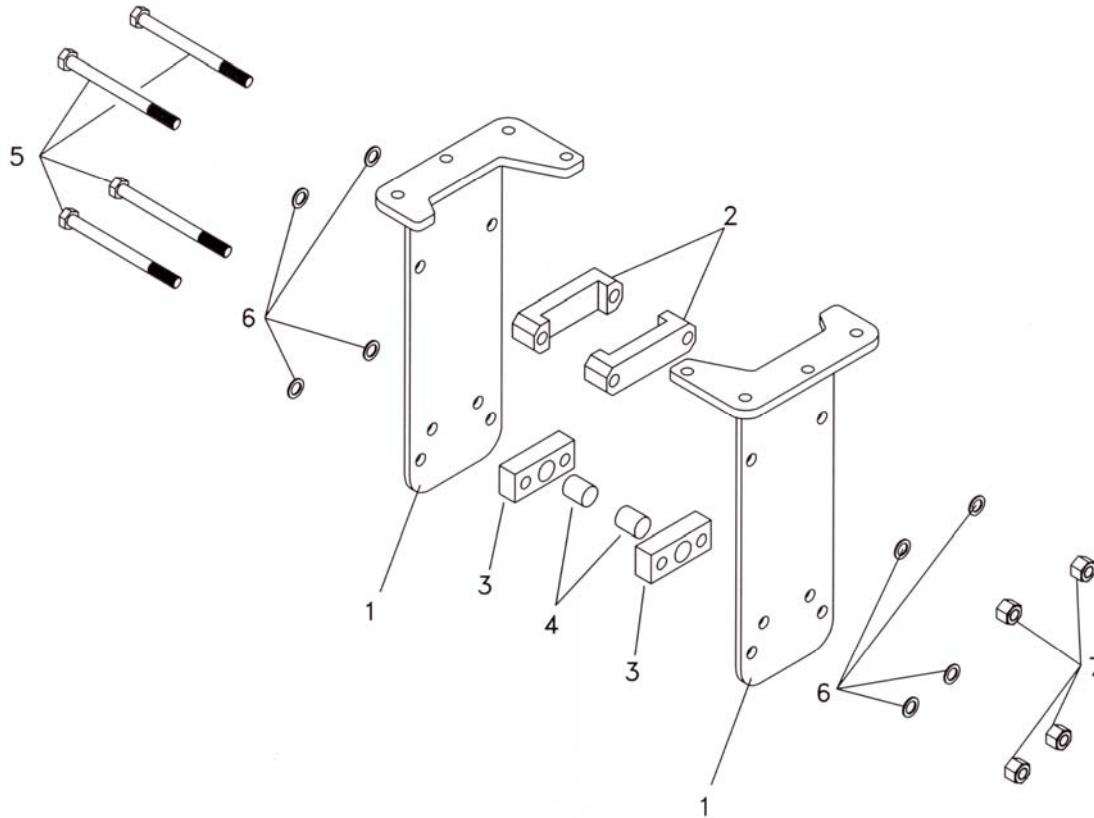


DAMPER PARTS LIST
Fx35QT HYDRARAM CRADLE
902307880010 ASSY

<i>ITEM</i>	<i>PART NUMBER</i>	<i>QUANTITY</i>	<i>DESCRIPTION</i>
701	002307880010	1	T-Box
702	002307880020	1	Bottom Damper
703	002307880030	1	Front Damper
704	002307880040	1	Back Damper (A)
705	002307880050	1	Back Damper (B)
706	002307880060	1	Top Damper
707	002308880070	2	Dust Plug
708	002306880070	2	Pin Plug
709	002307880070	1	Soundproof Cover
710	002308880101	1	Dust Plug
711	002200830160	1	Grease Cap

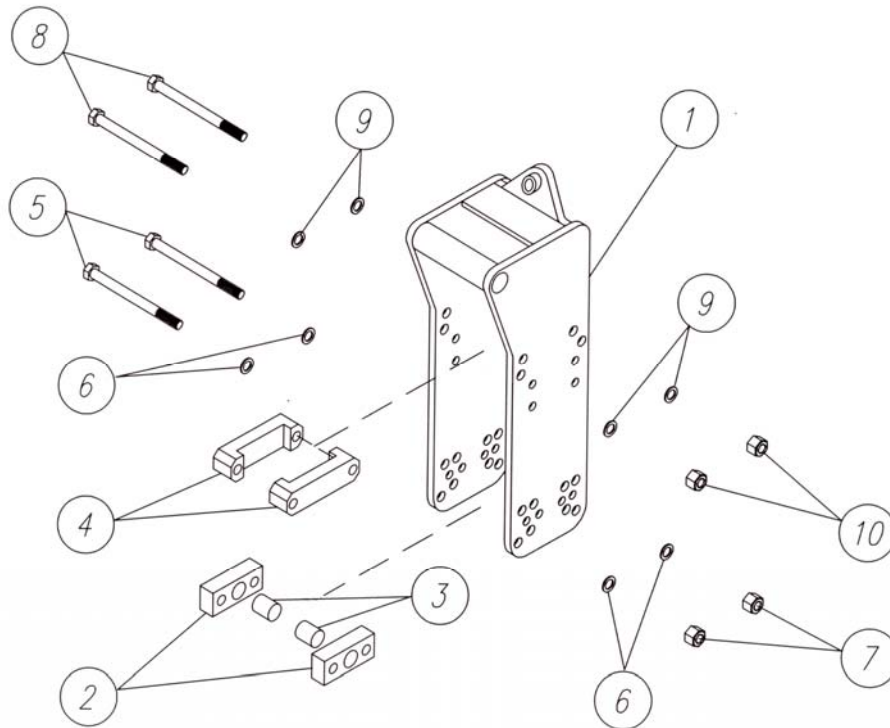


FLANGE SIDE PLATE MOUNTING **Fx35FSP HYDRARAM**



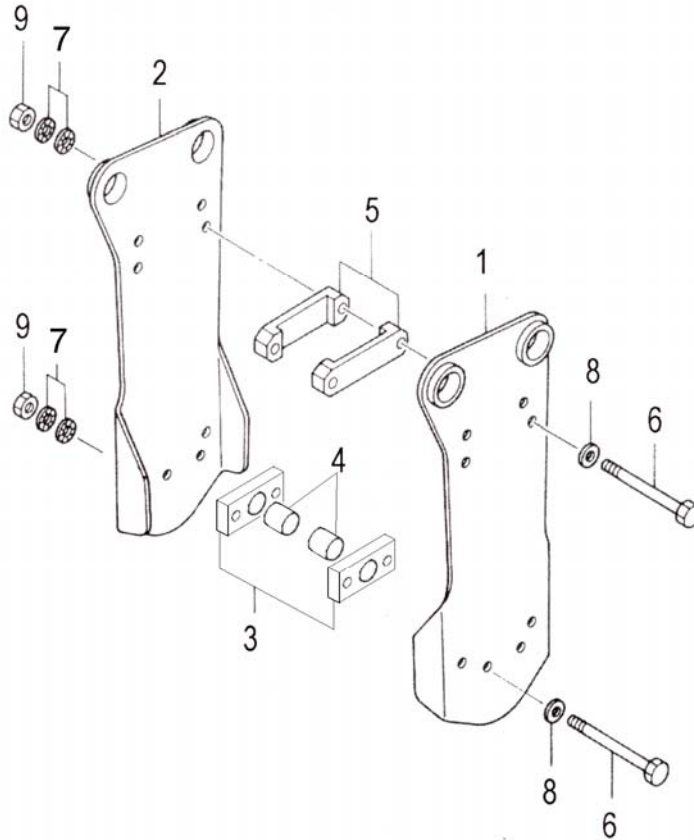
ITEM	PART NUMBER	QUANTITY	DESCRIPTION
1	F30002	2	Side Plate with Flange
2	FX35011	2	Set Plate "B"
3	FX35010	2	Set Plate "A"
4	FX35012	2	Set Pin
5	F330314	4	3/4" - 10 x 10.5" HHCS Gr. 5
6	7234	8	3/4" Flat Washer
7	10195	4	3/4" - 10 Lock Nut

CP 027 MOUNTING BRACKET Fx35CP HYDRARAM



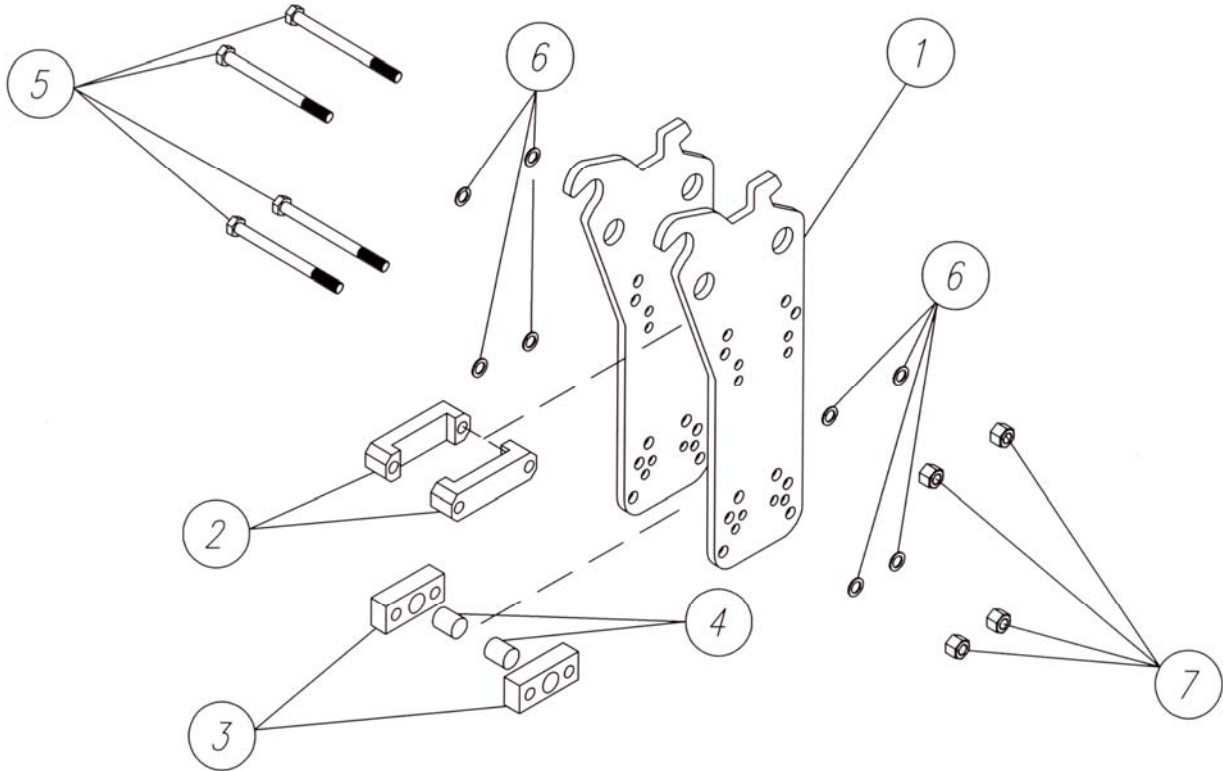
ITEM	PART NUMBER	QUANTITY	DESCRIPTION
1	28401	1	CP Breaker Bracket
2	FX35010	2	Set Plate (A)
3	FX35012	2	Set Pin
4	FX35011	2	Set Plate (B)
5	28206	2	3/4" -10 x 11.00" HHCS Gr. 5
6	7234	4	3/4" Flat Washer
7	10195	2	3/4" - 10 Lock Nut
8	28206	2	3/4"-10 x 11.00" HHCS Gr. 5
9	7234	4	3/4" Flat Washer
10	10195	2	3/4" - 10 Lock Nut

MINI-EXCAVATOR SIDE PLATE MOUNTING Fx35FB HYDRARAM



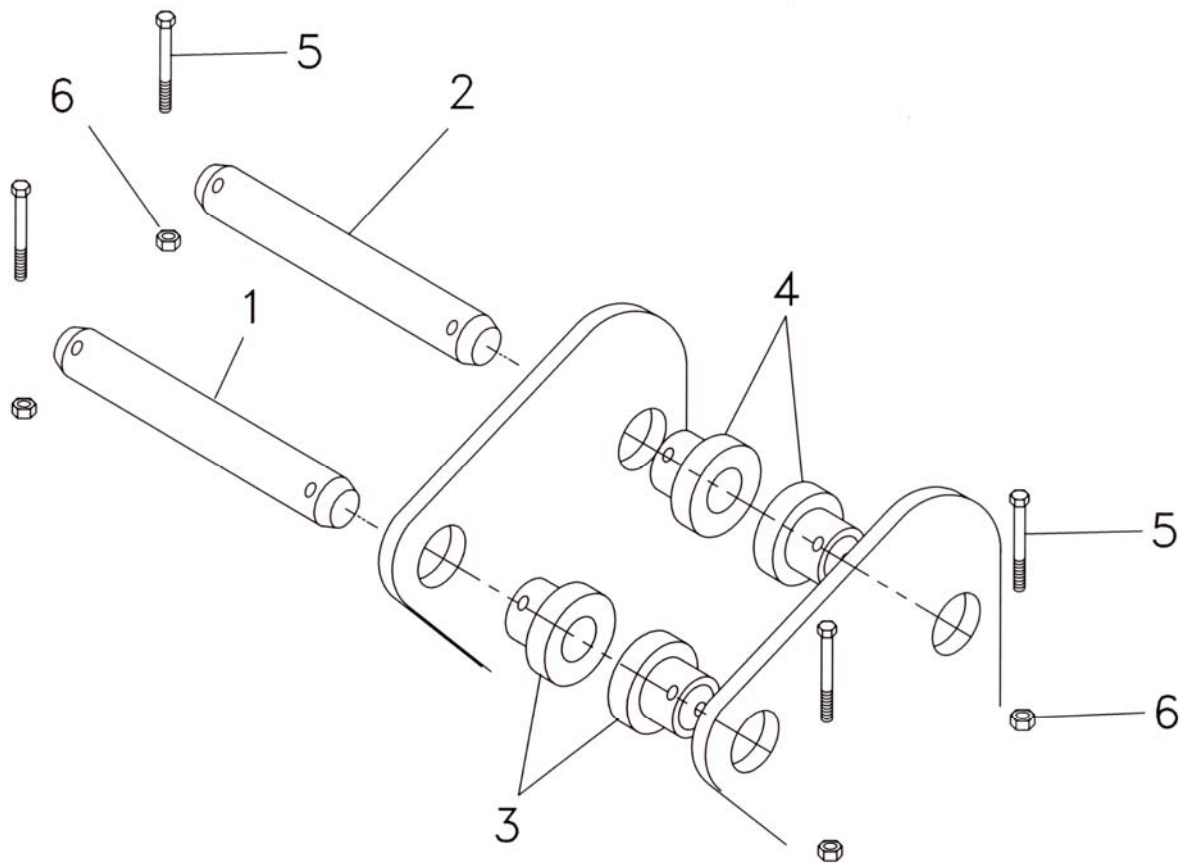
ITEM	PART NUMBER	QUANTITY	DESCRIPTION
1	FX35035	1	RH Side Plate
2	FX35036	1	LH Side Plate
3	FX35037	2	Set Plate (A)
4	FX35038	2	Set Pin
5	FX35039	2	Set Plate (B)
6	10103220200	4	Bolt
7	HB3R81114	4	Disk Washer
8	140011220000	4	Flat Washer
9	12013220000	4	Nut

WB 27/35 SIDE PLATE MOUNTING Fx35WBME HYDRARAM



ITEM	PART NUMBER	QUANTITY	DESCRIPTION
1	F40076	2	WBME Side Plate
2	FX35011	2	Set Plate (B)
3	FX35010	2	Set Plate (A)
4	FX35012	2	Set Pin
5	28206	4	3/4" – 10 UNC x 11.00" Gr. 5
6	7234	8	3/4" Flat Washer
7	10195	4	3/4" – 10 Lock Nut

MOUNTING PIN KIT FOR **Fx35ME AND Fx35WBME VERSIONS**





MOUNTING PIN KIT FOR Fx35ME AND Fx35WBME VERSIONS

Serial Number

Base Machine Make: _____

Base Machine Model: _____

Dipperstick Pin Diameter: _____

Link Pin Diameter: _____

Dipperstick Width: _____

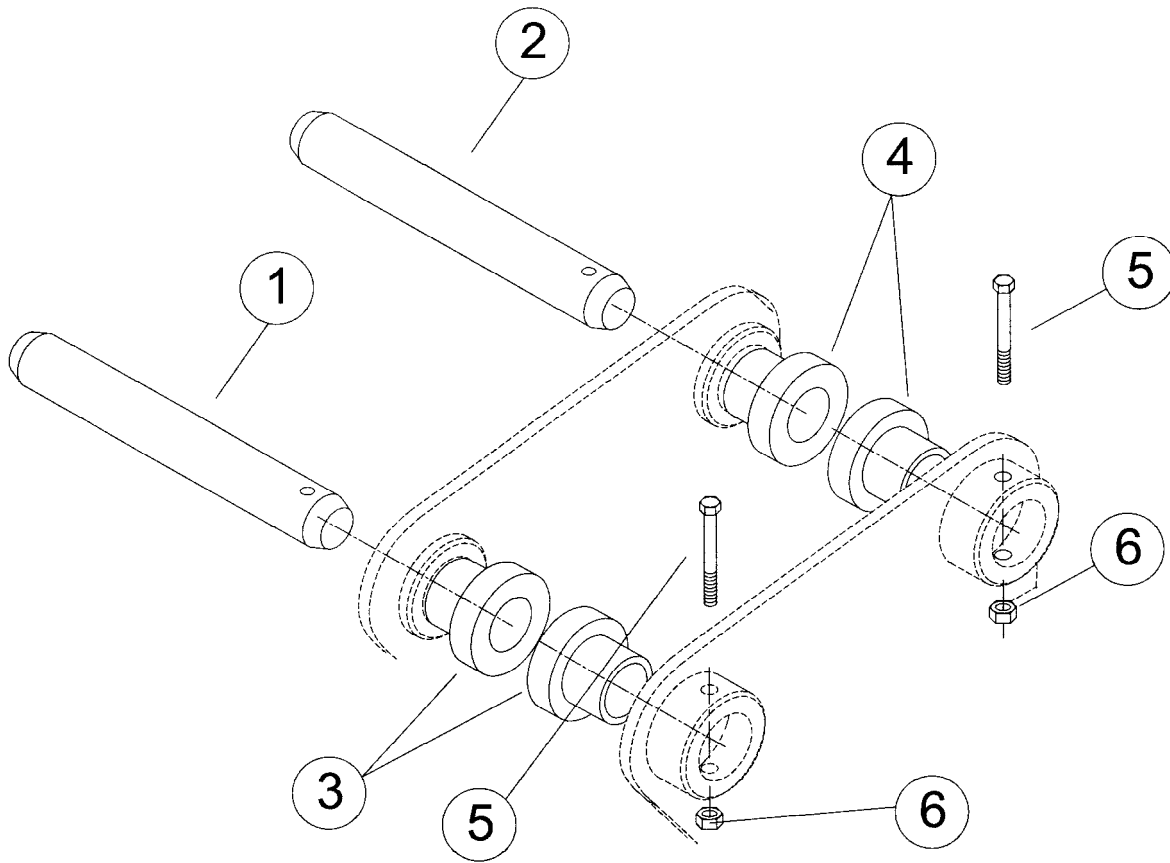
Link Pin Width: _____

MOUNTING KIT PART NO: _____

Consisting of the following:

<i>ITEM</i>	<i>PART NUMBER</i>	<i>QUANTITY</i>	<i>DESCRIPTION</i>
1	_____	1	_____ Dia. Mounting Pin
2	_____	1	_____ Dia. Mounting Pin
3	_____	2	_____ Dia. Mounting Bushing x _____ lg.
4	_____	2	_____ Dia. Mounting Bushing x _____ lg.
5	_____	2	1/2" -13 x Bolt
6	_____	2	1/2" -13 UNC Locknut

MOUNTING PIN KIT FOR
Fx35Qt AND Fx35FSP VERSIONS





MOUNTING PIN KIT FOR Fx35Qt AND Fx35FSP VERSIONS

Serial Number

Base Machine Make: _____

Base Machine Model: _____

Dipperstick Pin Diameter: _____

Link Pin Diameter: _____

Dipperstick Width: _____

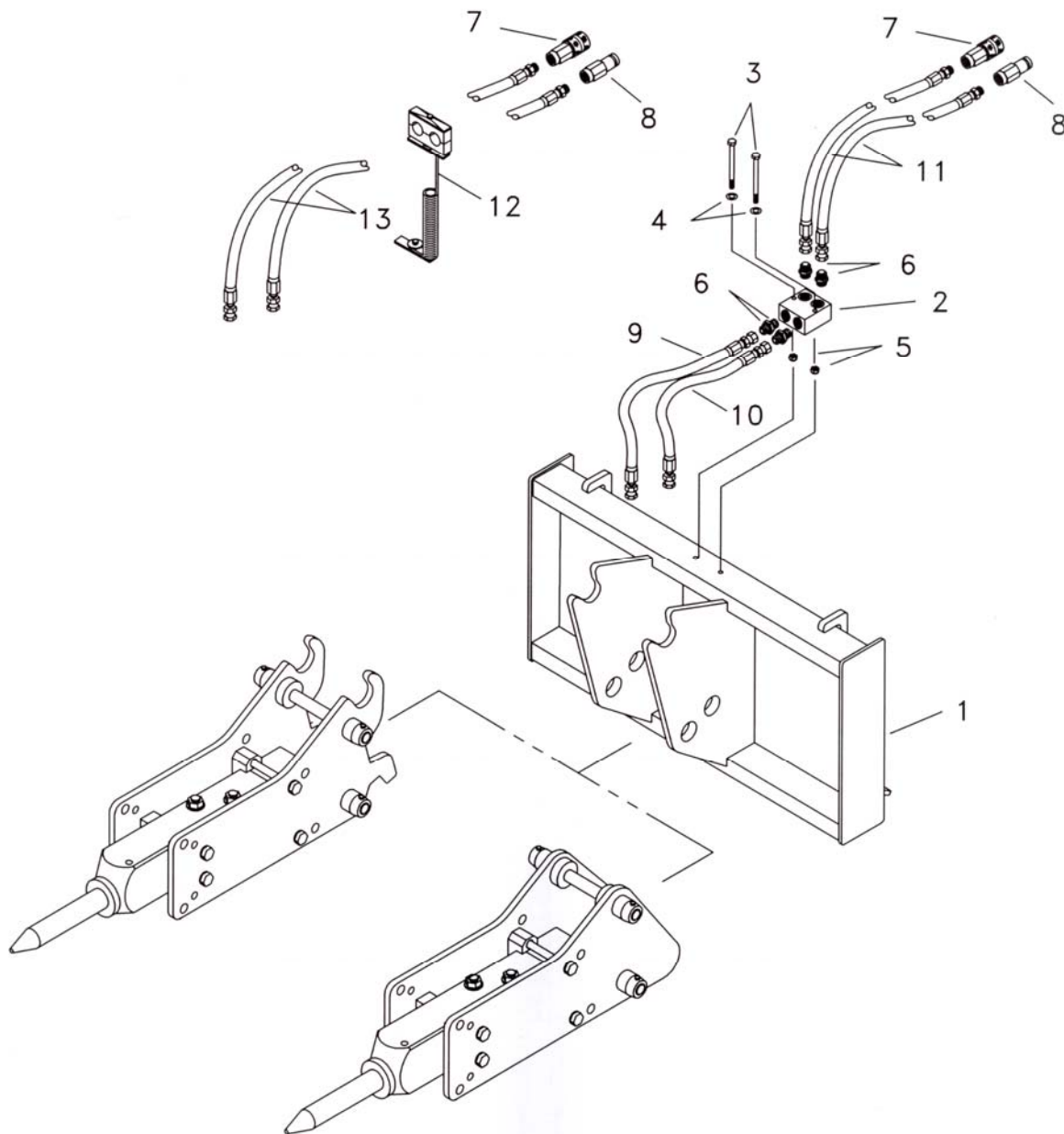
Link Pin Width: _____

MOUNTING KIT PART NO: _____

Consisting of the following:

<i>ITEM</i>	<i>PART NUMBER</i>	<i>QUANTITY</i>	<i>DESCRIPTION</i>
1	_____	1	_____ Dia. Mounting Pin x 17" Long
2	_____	1	_____ Dia. Mounting Pin x 17" Long
3	_____	2	_____ Dia. Mounting Bushing x _____ lg.
4	_____	2	_____ Dia. Mounting Bushing x _____ lg.
5	06422	2	1/2" -13 x 5" Bolt
6	07228	2	1/2" -13 UNC Locknut

ME TWO-POSITION (PIN-ON)
UNIVERSAL QUICK ATTACH BRACKET
FOR Fx35 HYDRARAMS

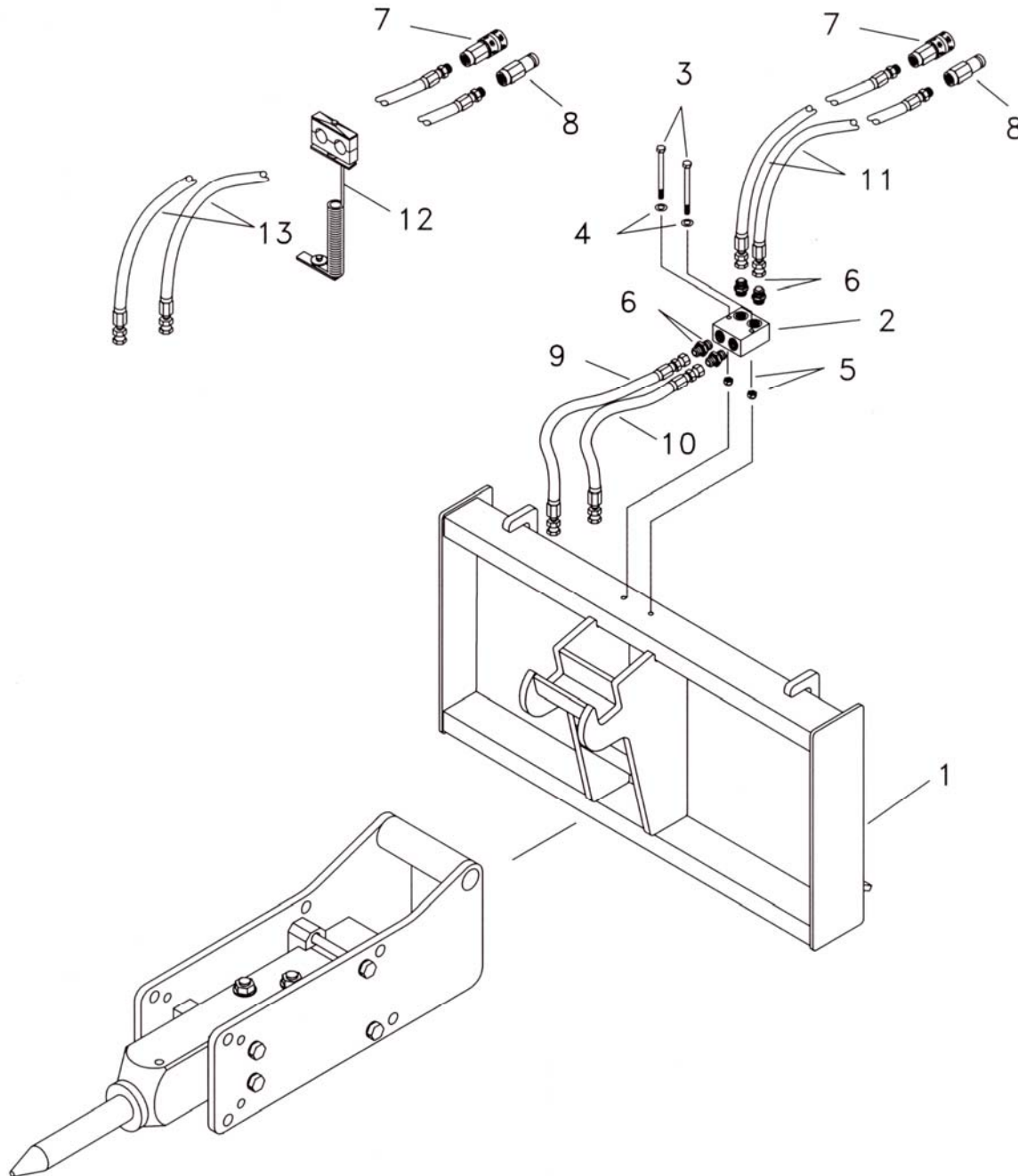




ME TWO-POSITION (PIN-ON)
UNIVERSAL QUICK ATTACH BRACKET
PARTS LIST

<i>ITEM</i>	<i>PART NUMBER</i>	<i>QUANTITY</i>	<i>DESCRIPTION</i>
1	28208	1	Universal Quick Attach Bracket
	26796	---	Quick Attach Bracket for ME50 Series
2	19945	1	Control Valve Block
3	19946	2	3/8"-16 x 5.00" Lg HHCS
4	07241	2	3/8" Flat Washer
5	12272	2	3/8"-16 Locknut
6	15593	4	Adapter
7	19114	1	Quick Disconnect - Female
8	19115	1	Quick Disconnect - Male
9		1	Hose Assembly
10		1	Hose Assembly
11	28275	2	Hose Whip
12	14950	2	Spring Hose Guide
13	15845	2	Hose Whip

CP UNIVERSAL QUICK ATTACH BRACKET FOR Fx35 HYDRARAMS

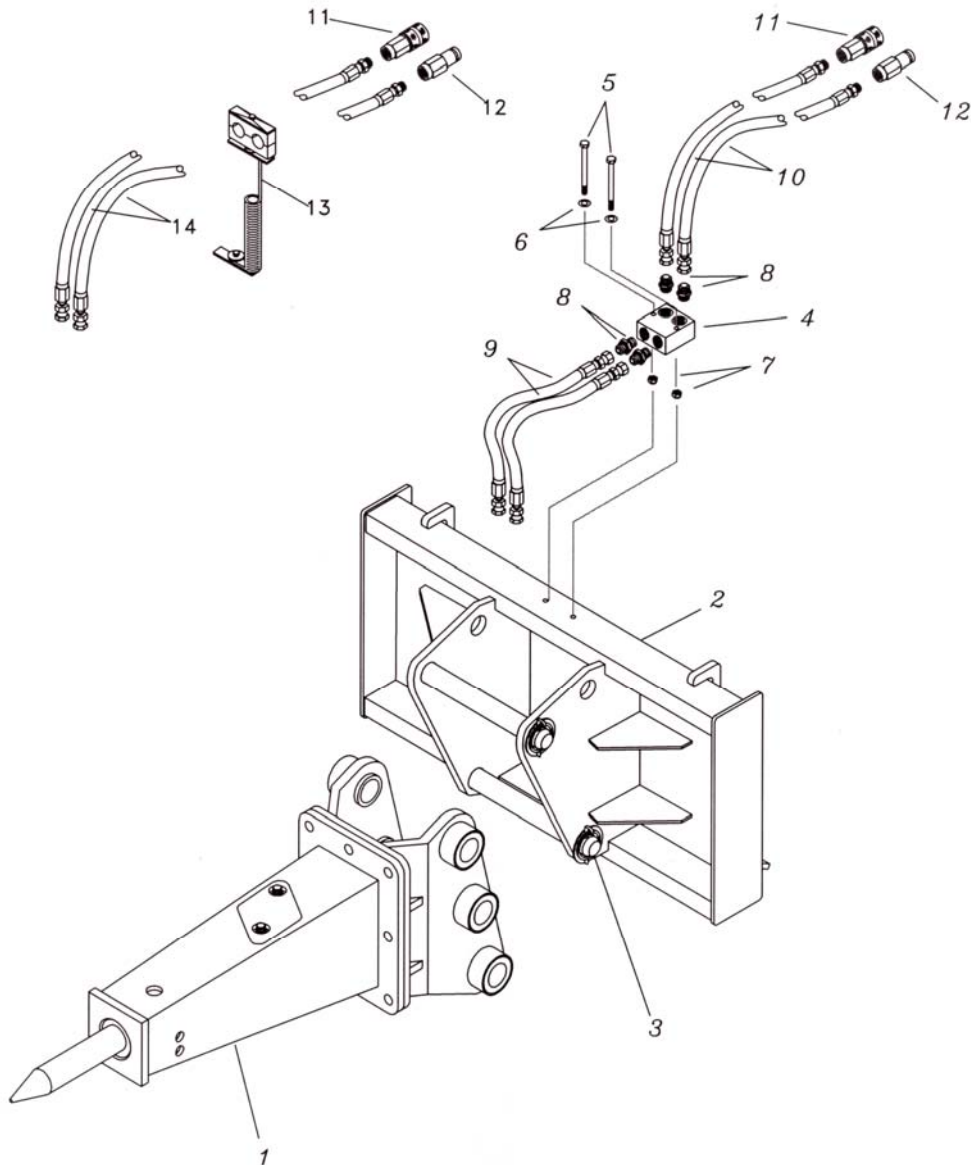




CP UNIVERSAL QUICK ATTACH BRACKET PARTS LIST

<i>ITEM</i>	<i>PART NUMBER</i>	<i>QUANTITY</i>	<i>DESCRIPTION</i>
1	26750	1	CP Universal Quick Attach Bracket
2	19945	1	Control Valve Block
3	19946	2	3/8"-16 x 5.00" Lg HHCS
4	7241	2	3/8" Flat Washer
5	12272	2	3/8"-16 Locknut
6	15593	4	Adapter
7	19114	1	Quick Disconnect - Female
8	19115	1	Quick Disconnect - Male
9		1	Hose Assembly
10		1	Hose Assembly
11	28275	2	Hose Whip
12	14950	2	Spring Hose Guide
13	15845	2	Hose Whip

TWO-POSITION (PIN-ON)
UNIVERSAL QUICK ATTACH BRACKET
For Fx35QT or Fx35FSP HYDRARAM

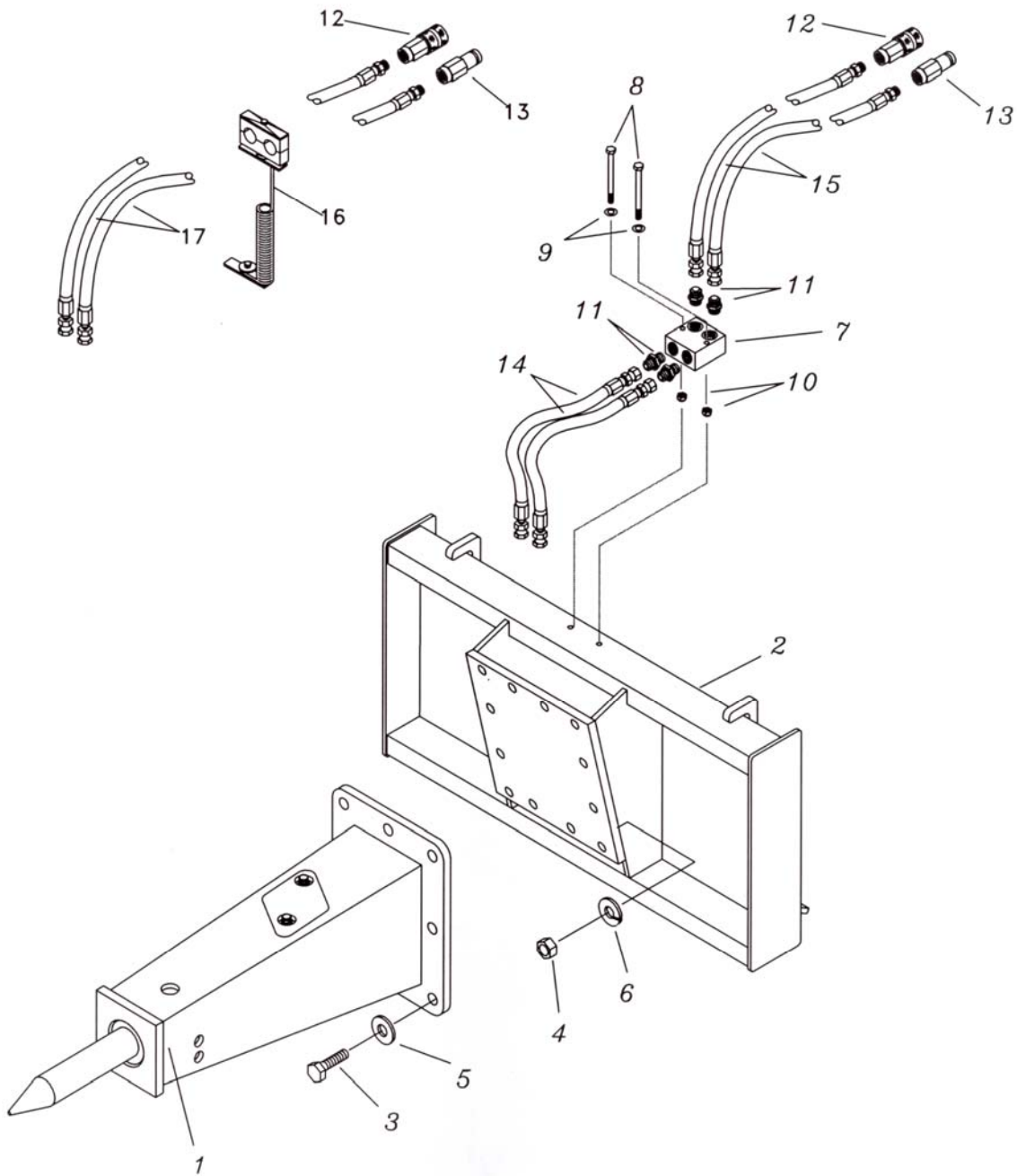




TWO-POSITION (PIN-ON)
UNIVERSAL QUICK ATTACH BRACKET
PARTS LIST

<i>ITEM</i>	<i>PART NUMBER</i>	<i>QUANTITY</i>	<i>DESCRIPTION</i>
1	Fx35QT or FSP	1	Breaker
2	26666	1	Universal Quick Attach Bracket
3	KM26666	1	Mounting Hardware
4	19945	1	Control Valve Block
5	19945	2	3/8" Bolt
6	7241	2	3/8" Flat Washer
7	12272	2	3/8" Lock Nut
8	15593	4	Adapter
9			
10	28275	2	Whip Hose
11	19114	1	Quick Disconnect (Female)
12	19115	1	Quick Disconnect (Male)
13	14950	1	Spring Hose Guide
14	15845	2	Whip Hose

BOLTED ONE-PIECE RIGID
QUICK ATTACH BRACKET
For Fx35QT or Fx35FSP HYDRARAM



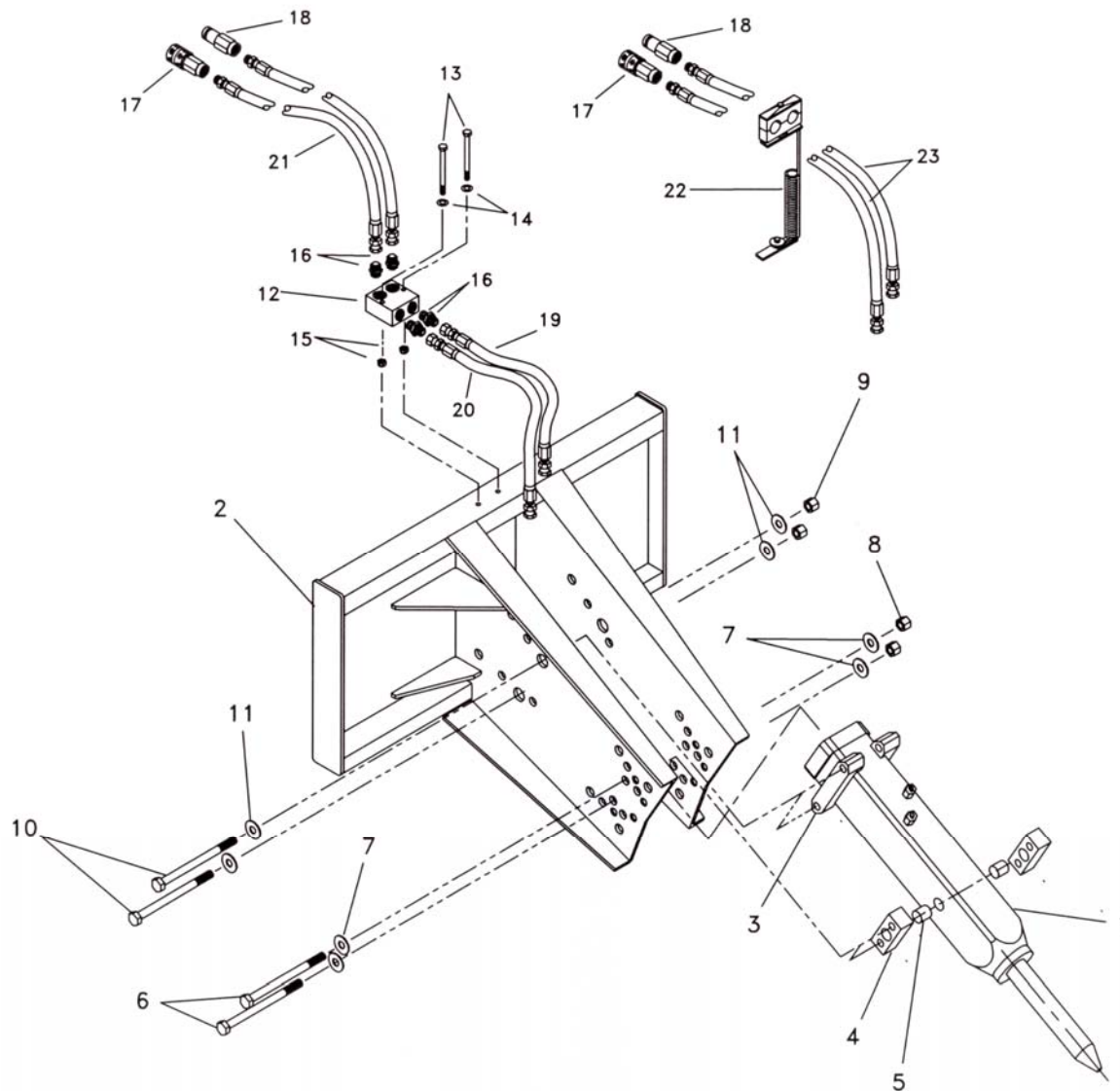


BOLTED ONE-PIECE RIGID **QUICK ATTACH BRACKET** **PARTS LIST**

<i>ITEM</i>	<i>PART NUMBER</i>	<i>QUANTITY</i>	<i>DESCRIPTION</i>
1	Fx35QT or FSP	1	HydraRam, T-Box or Flange Style*
2	26670	1	Universal Quick Attach Bracket
	26672	---	Quick Attach Bracket for Case Unloaders
3	F330312	8	5/8" - 11 UNC Bolt x 2 3/4" Long (Grade 8)
4	1125	8	5/8" - 11 UNC Nut
5	18982	8	5/8" Hardened Washer
6	9847	8	5/8" Lock Washer
7	19945	1	Control valve Block
8	19946	2	3/18"-16 x 5.00" Lg HHCS
9	07241	2	3/8" Flat Washer
10	12272	2	3/8"-16 Locknut
11	15593	4	10-8 Adapter
12	19114	1	Quick Dissconnect - Female
13	19115	1	Quick Dissconnect -Male
14	28276	2	Hose Assembly
15	28275	2	Hose Whip
16	14950	1	Spring Hose Guide
17	15845	2	Hose Whip

* The Loader Attachment Plate shown here can be use with EITHER the T-Box of Flange mounting.

OPEN STYLE ONE-PIECE RIGID
QUICK ATTACH BRACKET
For Fx35SS HYDRARAM





OPEN STYLE ONE-PIECE RIGID QUICK ATTACH BRACKET PARTS LIST

<i>ITEM</i>	<i>PART NUMBER</i>	<i>QUANTITY</i>	<i>DESCRIPTION</i>
1	Fx35B	1	Breaker, Bare
2	26660	1	Universal Quick Attach Bracket
	26661	---	Quick Attach Bracket for Case Loaders
3	FX35011	2	Set Plate (B)
4	FX35010	2	Set Plate (A)
5	FX35012	2	Set Pin
6	F330314	2	3/4"-10 UNC x 10 1/2" HHCS Gr. 5 NC Lock Nut
7	7234	4	3/4" Flat Washer
8	28206	2	3/4"-9 UNC Lock Nut
9	FX35013	2	3/4"-10 UNC x 10 1/2" HHCS Gr. 5 NC Lock Nut
10	7234	4	3/4" Flat Washer
11	28206	2	3/4"-9 UNC Lock Nut
12	19945	1	Control Valve
13	19946	2	3/8"-16 x 5.00" LG HHCS
14	7241	2	3/8" Flat Washer
15	12272	2	3/8" Lock Nut
16	15593	4	10-8 Adapter
17	19114	1	Quick Disconnect-Female
18	19115	1	Quick Disconnect-Male
19		1	Hose Assembly
20		1	Hose Assembly
21	28275	2	Hose Whip
22	14950	1	Spring Hose Guide
23	19624	2	Hose Whip

SERVICE TOOL KIT

P/N BMX3590001

Furukawa Rock Drill USA includes a tool kit with every new hydraulic breaker. This tool kit contains many of the special tools and wrenches required to perform normal maintenance or repairs on the breaker. This is a basic tool kit, and is by no means complete or comprehensive, but it does contain some specialized tools, and wrench sizes not commonly found in the field. The following illustration depicts a typical tool kit and its contents:

