



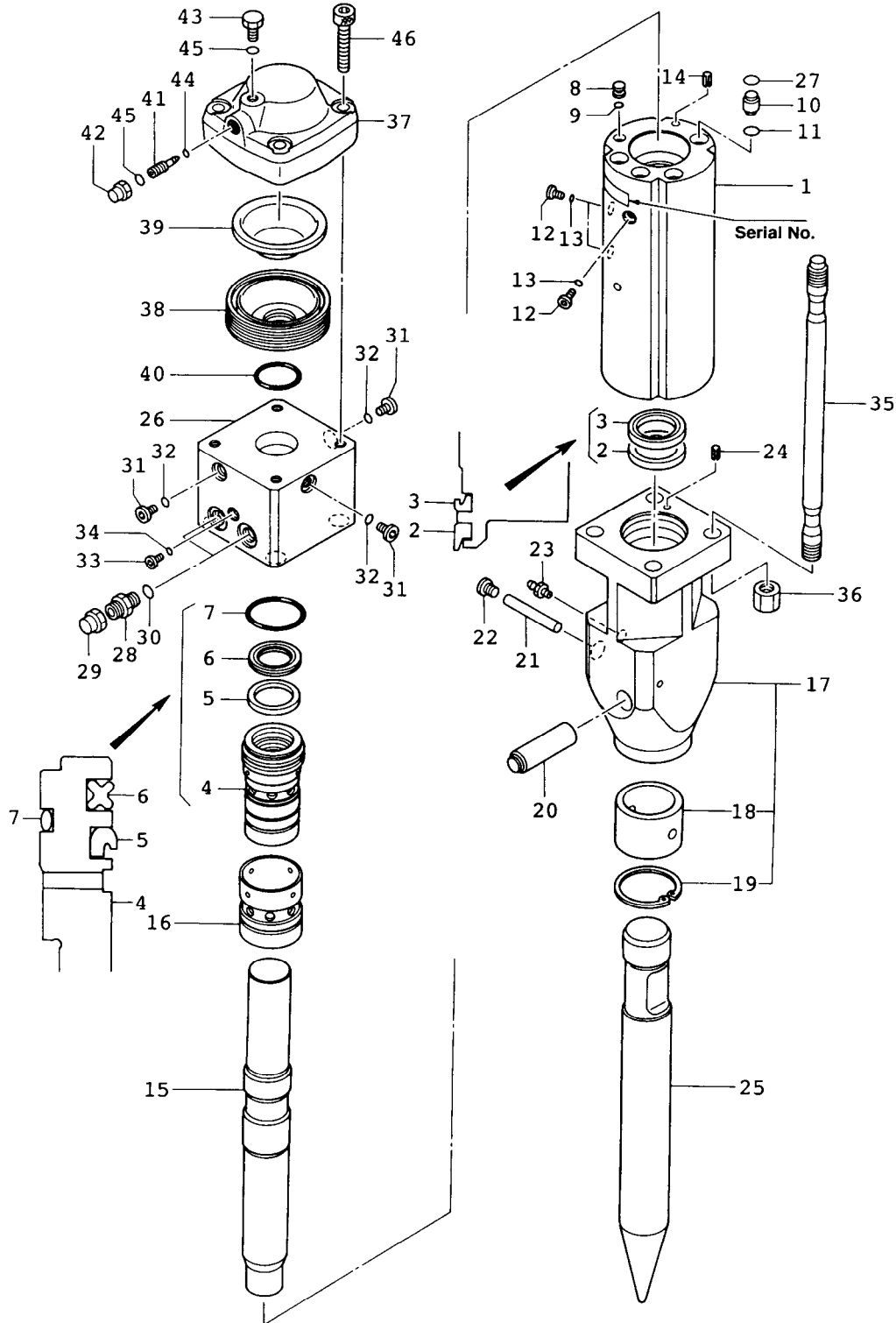
SECTION VI

PARTS LIST

***KF4 Serial No. 1001 ~ 5000
STANDARD SIDE PLATE VERSIONS***



KF4 HYDRARAM PARTS BREAKDOWN



KF4 HYDRARAM PARTS LIST

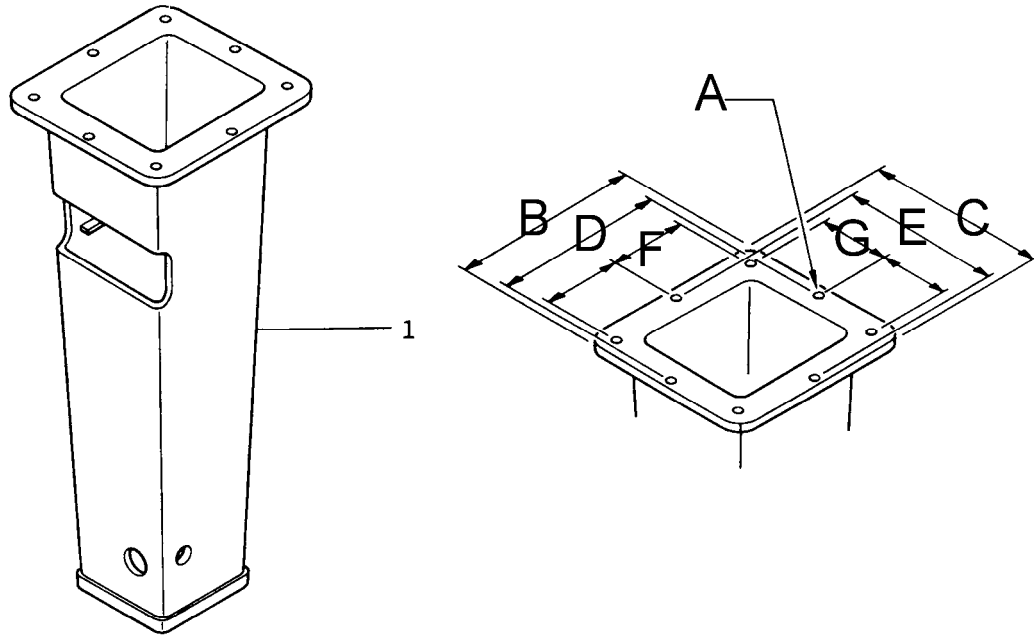


<u>ITEM</u>	<u>PART NUMBER</u>	<u>QTY</u>	<u>DESCRIPTION</u>	<u>ITEM</u>	<u>PART NUMBER</u>	<u>QTY</u>	<u>DESCRIPTION</u>
1	KF410101	1	Cylinder	25	KF425111	1	Blunt Tip [/O]
2	KHB4R10106	1	Dust Seal [/S]	25	KF425114	1	Chisel Bit [/O]
3	KHB4R10107	1	U-Packing [/S]	25	KF425115	1	Moil Point
4	KF410111	1	Seal Retainer	26	KF430101	1	Back Head
5	KF410112	1	U-Packing [/S]	27	K16001100020	4	O-Ring [/S]
6	KF410114	1	Seal Ring [/S]	28	K15287	2	Connector
7	K16102100075	1	O-Ring [/S]	29	(Not Used)	2	Union Cap
8	KHB2R10120	1	Plug [/S]	30	K16001100018	2	O-Ring [/S]
9	K16001110010	1	O-Ring [/S]	31	K08489102000	3	GPF Plug
10	KF410121	4	Bushing [/S]	32	K16001100011	3	O-Ring [/S]
11	K16001100020	4	O-Ring [/S]	33	K08489101000	1	GPF Plug
12	K08489101000	3	GPF Plug	34	K16001100008	1	O-Ring [/S]
13	K16001100008	3	O-Ring [/S]	35	KF436201	4	Through Bolt
14	K15403710025	1	Spring Pin	36	KF436202	4	Hexagon Nut
15	KF411101	1	Piston		KF470001	1	Accumulator
16	KF413101	1	Valve	37	KF470101	(1)	Accumulator Cap
17	KF420201	1	Fronthead	38	KF470102	(1)	Accumulator Body
18	KHB4R20103	(1)	Front Bushing	39	KHD50007012	(1)	Diaphragm
19	K26402000080	(1)	Snap Ring	40	K16102100055	(1)	O-Ring [/S]
20	KF420206	1	Rod Pin (Retainer)	41	K00712070134	(1)	Valve
21	KF420207	1	Stop Pin	42	KHB2G70121	(1)	Cap
22	KHB4R20108	1	Screw Plug [/S]	43	K00701070030	(1)	Plug
23	K17031200000	1	Grease Nipple	44	K16001100005	(1)	O-Ring [/S]
24	K15403710025	1	Spring Pin	45	K16001100014	(2)	O-Ring [/S]
				46	K10203216070	(4)	Socket Bolt

() Bracketed quantities indicate items included with the prior assembly.
 [/O] Items marked Option /O are optional depending on configuration
 [/S] Items marked Option /S are included in the KF492010 Seal Kit
 (Refer to Section VII for Seal Kit Details)



T-BOX MOUNTING
KF4QTT HYDRARAM

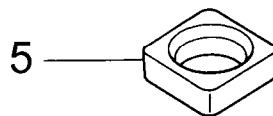
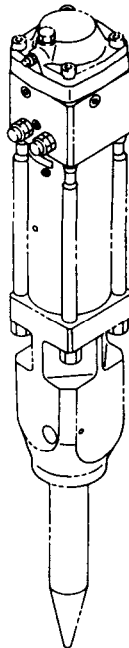
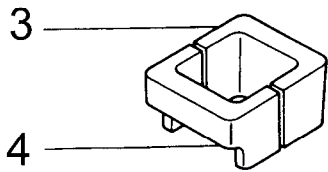
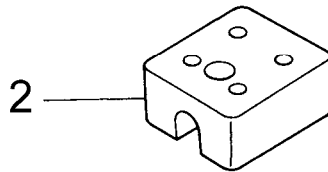
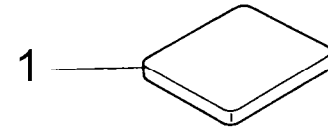


<i>ITEM</i>	<i>PART NUMBER</i>	<i>QUANTITY</i>	<i>DESCRIPTION</i>
1	KF488201	1	T-Box Weldment

	<u>Inch</u>	<u>Milimeter</u>	
A	0.886	22	Bolt Hole Diameter
B	14.015	356	Flange, Long Side
C	13.228	336	Flange, Short Side
D	12.362	314	Center to Center
E	11.575	294	Center to Center
F	5.512	140	Center to Center
G	5.118	130	Center to Center



DAMPER PARTS LIST
KF4QTC HYDRARAM CRADLE
And
KF4QTT HYDRARAM T-BOX





DAMPER PARTS LIST

KF4QTC HYDRARAM CRADLE

And

KF4QTT HYDRARAM T-BOX

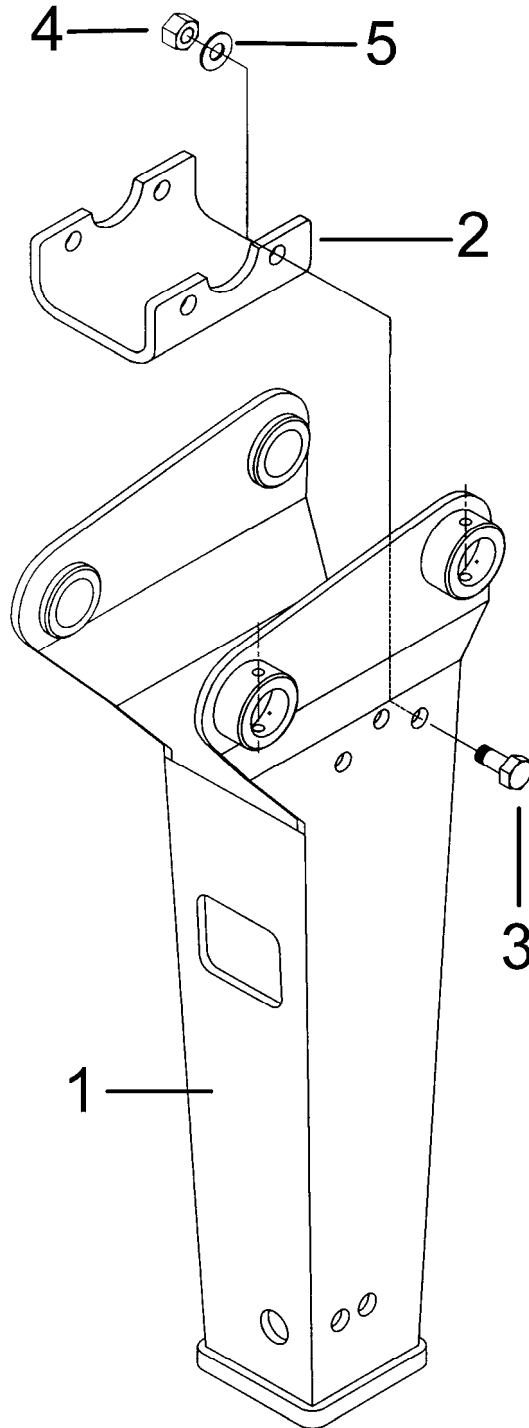
<i>ITEM</i>	<i>PART NUMBER</i>	<i>QUANTITY</i>	<i>DESCRIPTION</i>
1	KF488121	1	Top Spacer
2	KF488122	1	Top Damper
3	KF488128	1	Back Damper, Half
4	KF488127	1	Back Damper, Half
5	KF488124	1	Front Damper

NOTE:

The same urethane Dampers are used with the CRADLE style mounting and the T-BOX frame.



CRADLE MOUNTING
KF4QTC HYDRARAM





MOUNTING PARTS LIST
KF4QTC HYDRARAM CRADLE

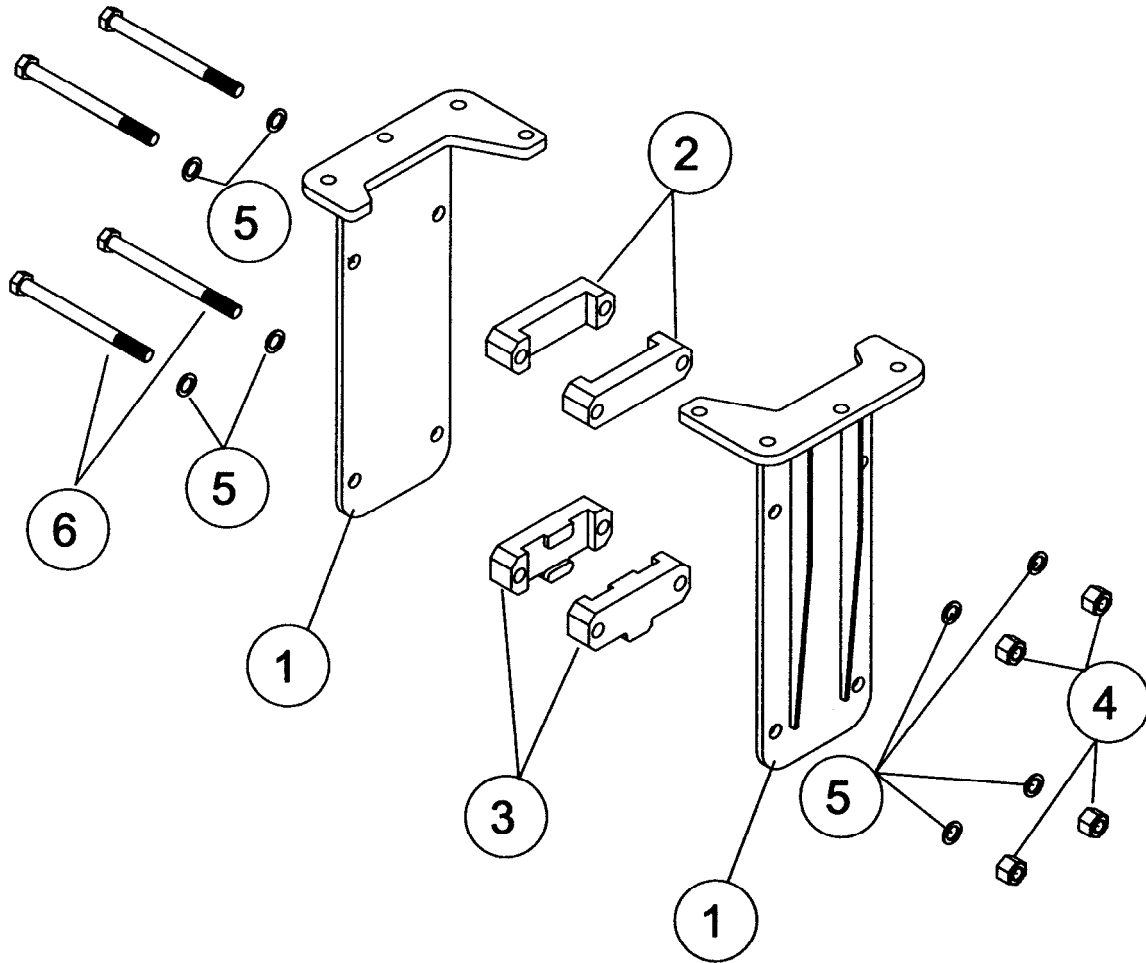
<i>ITEM</i>	<i>PART NUMBER</i>	<i>QUANTITY</i>	<i>DESCRIPTION</i>
1	KF40001	1	Cradle Body Weldment
2	KF40002	1	Retiner Bracket
3	K00095	4	1" – 8 NC Boly x 3.0"
4	K06808	4	Nuts, 1" 8 NC
5	K18979	4	1" Hardened Washer
	K15840	2	Whip Hose <i>(Not Shown)</i>

NOTE:

The KF4Qtc requires the use of the same urethane dampers as the KF4Qtt, T-Box version of the hammer. Refer to the prior pages for detailed information.

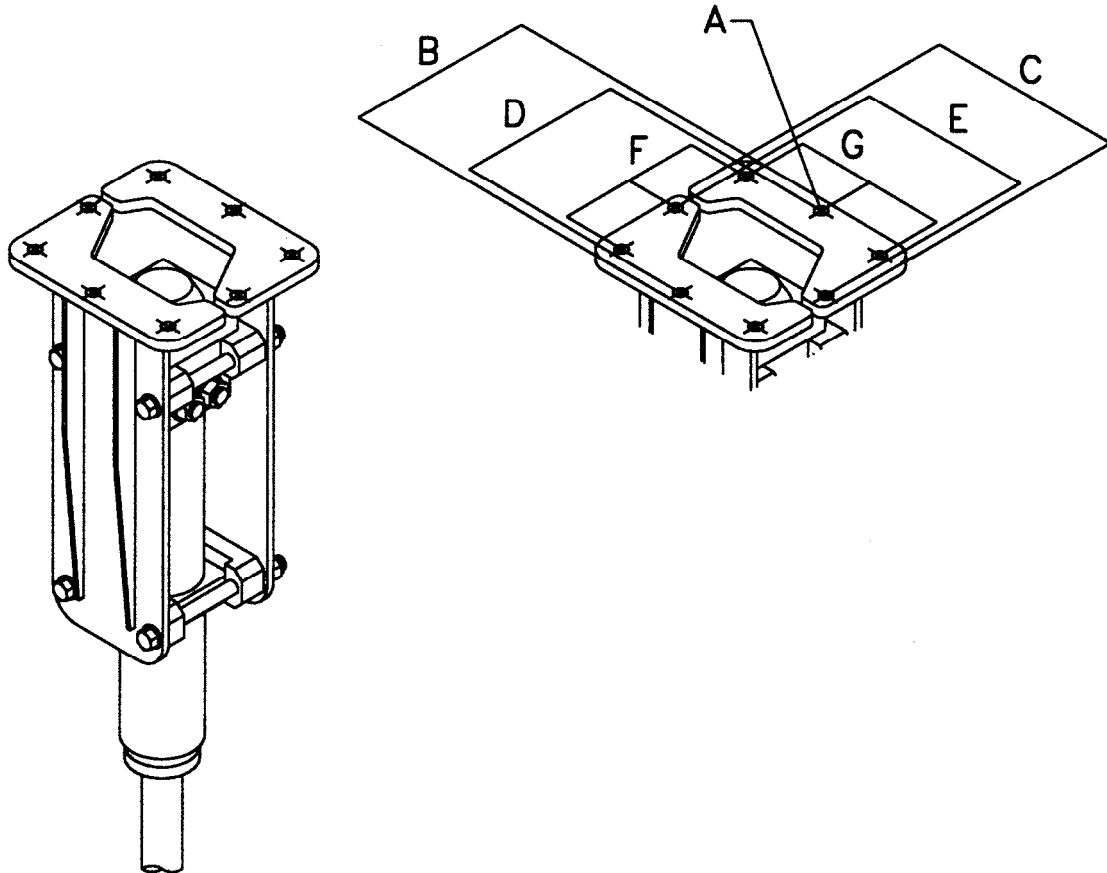


FLANGE SIDE PLATE MOUNTING
KF4FSP HYDRARAM



<i>ITEM</i>	<i>PART NUMBER</i>	<i>QUANTITY</i>	<i>DESCRIPTION</i>
1	KF40030	2	Side Plate with Flange
2	KF430416	2	Upper Set Plate
3	KF430415	2	Lower Sst Plate
4	K10189	4	7/8"-9 UNC Locknut
5	K07236	8	7/8"-9 Flat Washer
6	K10188	4	7/8"-9 UNC x 10.50" HHCS, Gr.5

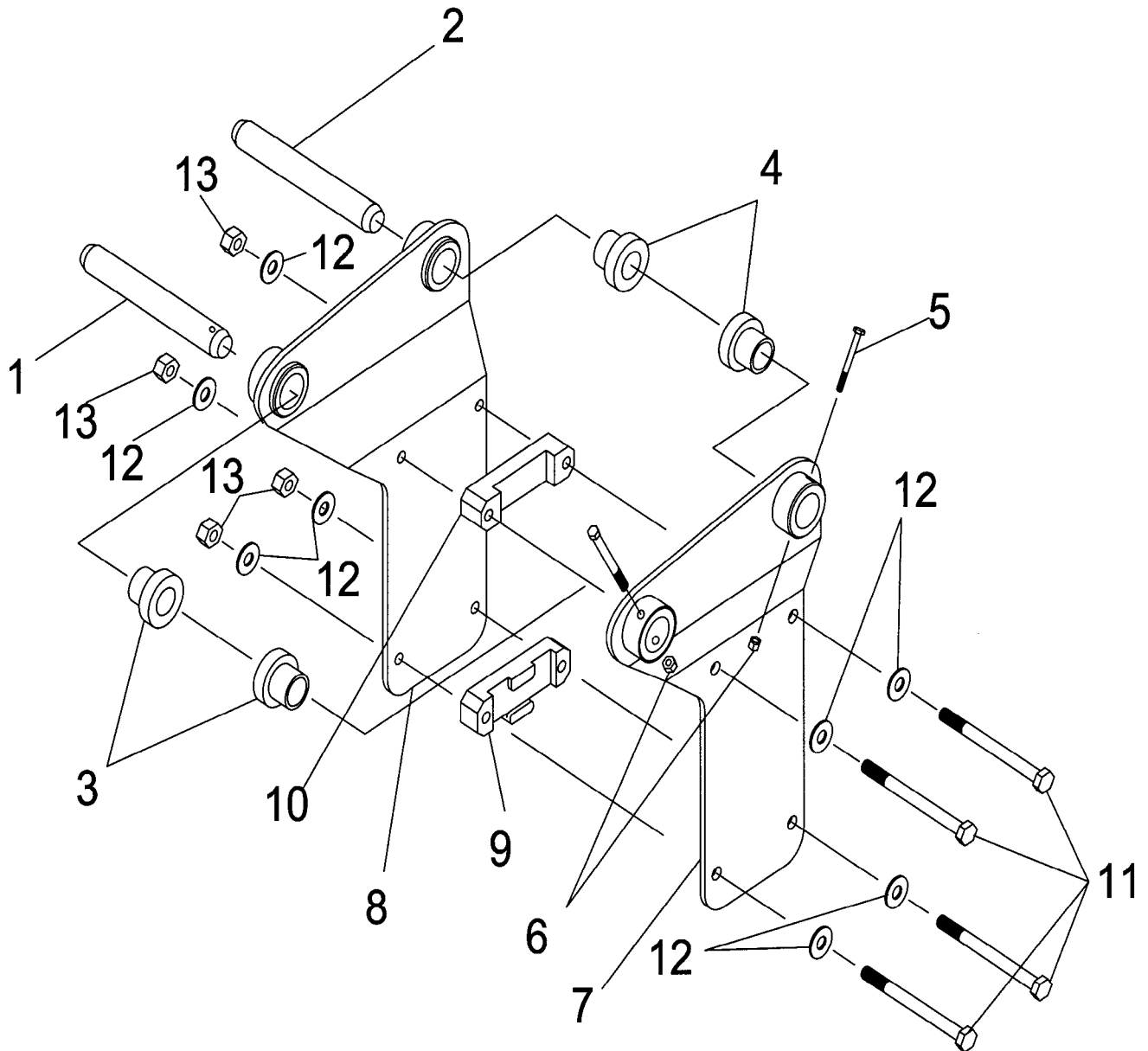
FLANGE SIDE PLATE MOUNTING
KF4FSP HYDRARAM



	<u>Inch</u>	<u>Milimeter</u>	
A	0.886	22	Bolt Hole Diameter
B	13.228	336	Flange, Short Side
C	14.015	356	Flange, Long Side
D	11.575	294	Center to Center
E	12.362	314	Center to Center
F	5.118	130	Center to Center
G	5.512	140	Center to Center



SIDE PLATE MOUNTING
KF4 HYDRARAM



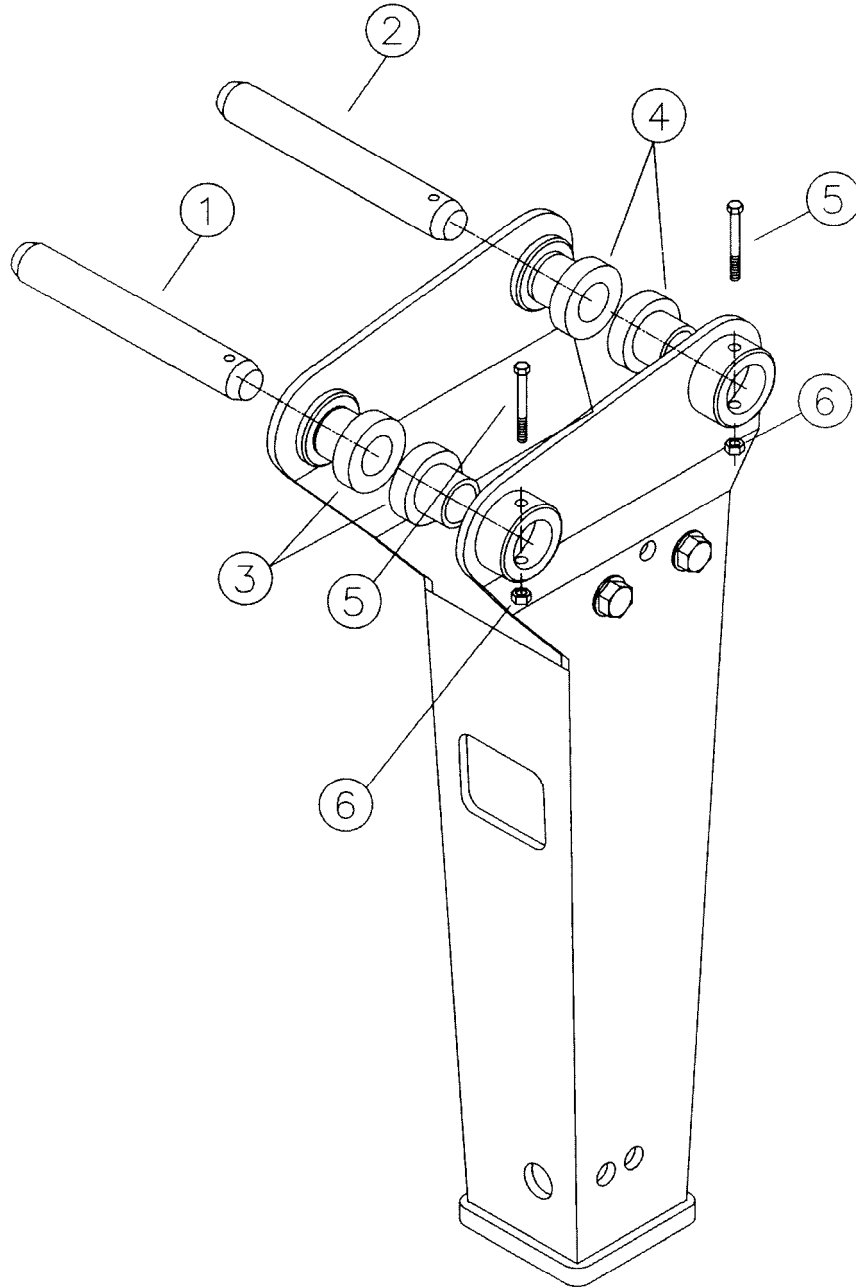


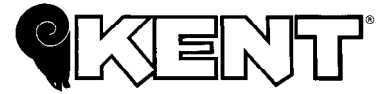
SIDE PLATE MOUNTING
KF4 HYDRARAM

<i>ITEM</i>	<i>PART NUMBER</i>	<i>QUANTITY</i>	<i>DESCRIPTION</i>
1	<i>Refer to the specifications on page 13</i>	1	Mounting Pin, Dipperstick
2		1	Mounting Pin, Link
3		2	Mounting Bushing, Dipperstick
4		2	Mounting Bushing, Link
5	K06422	2	Keeper Bolt, 1/2"-13 x 5" HHCS
6	K07228	2	1/2"- 13NC Locknut
7	KF40012	1	Side Plate, Right Side
8	KF40011	1	Side Plate, Left Side
9	KF430416	2	Set Plate "B", Lower
10	KF430415	2	Set Plate "A", Upper
11	K10188	4	7/8"-10 UNC x 10.50" HHCS
12	K07236	8	7/8" Flat Washer
13	K10189	4	7/8"-10 UNC Locknut



MOUNTING PIN KIT
KF4QTC HYDRARAM CRADLE





MOUNTING PIN KIT PARTS LIST
KF4 HYDRARAM (SIDE PLATES)
OR
KF4QTC HYDRARAM (CRADLE TYPE)

Serial Number

Base Machine Make: _____
 Base Machine Model: _____
 Dipperstick Pin Diameter: _____
 Link Pin Diameter: _____
 Dipperstick Width: _____
 Link Pin Width: _____

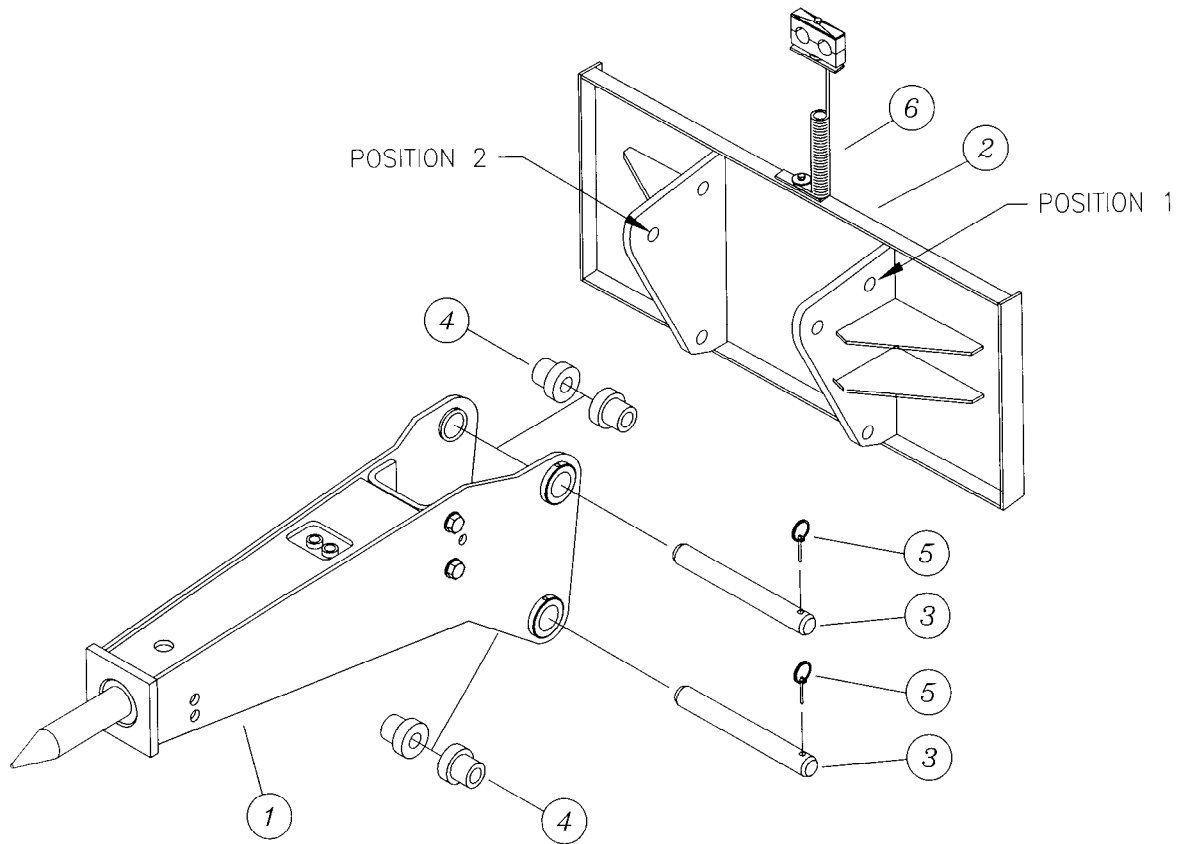
MOUNTING KIT PART NO: _____

Consisting of the following:

<i>ITEM</i>	<i>PART NUMBER</i>	<i>QUANTITY</i>	<i>DESCRIPTION</i>
1	_____	1	_____ Dia. Mounting Pin x 17" Long
2	_____	1	_____ Dia. Mounting Pin x 17" Long
3	_____	2	_____ Dia. Mounting Bushing x _____ lg.
4	_____	2	_____ Dia. Mounting Bushing x _____ lg.
5	<u>K06422</u>	2	1/2" -13 x 5" Bolt
6	<u>K07228</u>	2	1/2" -13 UNC Locknut

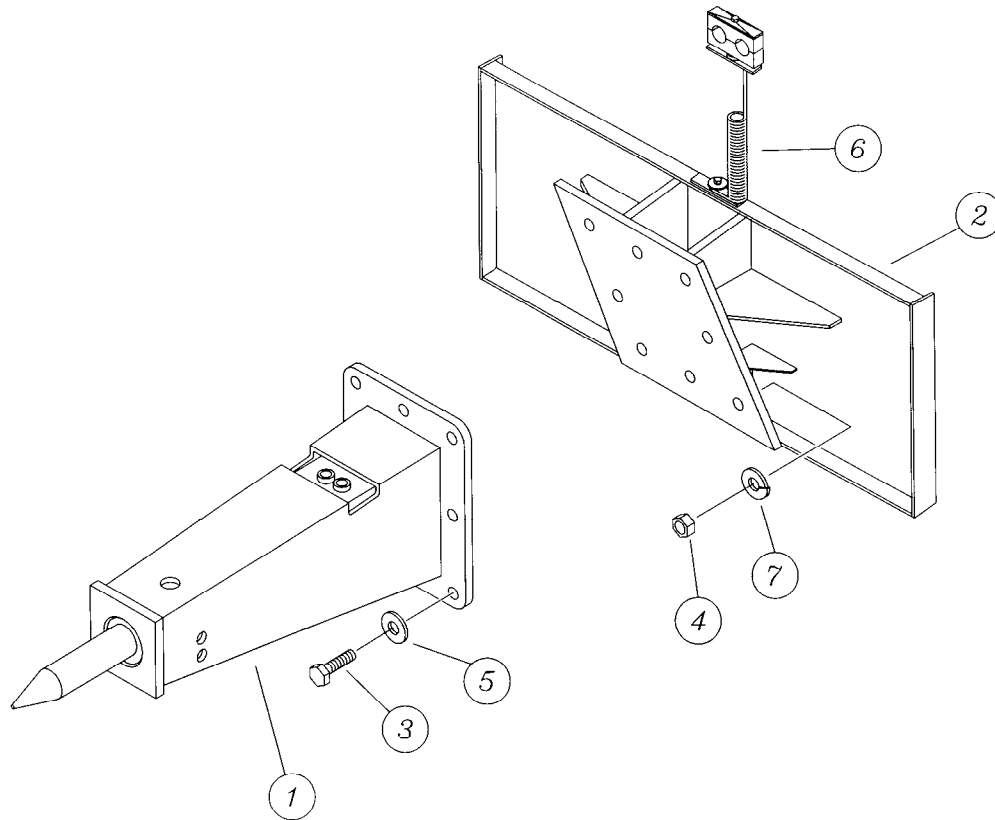


TWO-POSITION (PIN-ON)
QUICK ATTACH BRACKET
For KF4QTC HYDRARAM



ITEM	PART NUMBER	QUANTITY	DESCRIPTION
1	KF4QTC	1	Hammer Complete, Cradle Style
2	K26394	1	Universal Quick Attach Bracket
3	K19360	2	Mounting Pin, 1 1/2" x 17"
4	K14129	4	Mounting Bushing, 1.51" x 2.45"
5	K07218	2	Retainer Lynch Pin
6	K14950	1	Hose Saver Spring Bracket, 1/2" Hose
	K15845	2	Whip Hose, 120" (Not Shown)

BOLTED ONE-PIECE RIGID
QUICK ATTACH BRACKET
For KF4QTT HYDRARAM

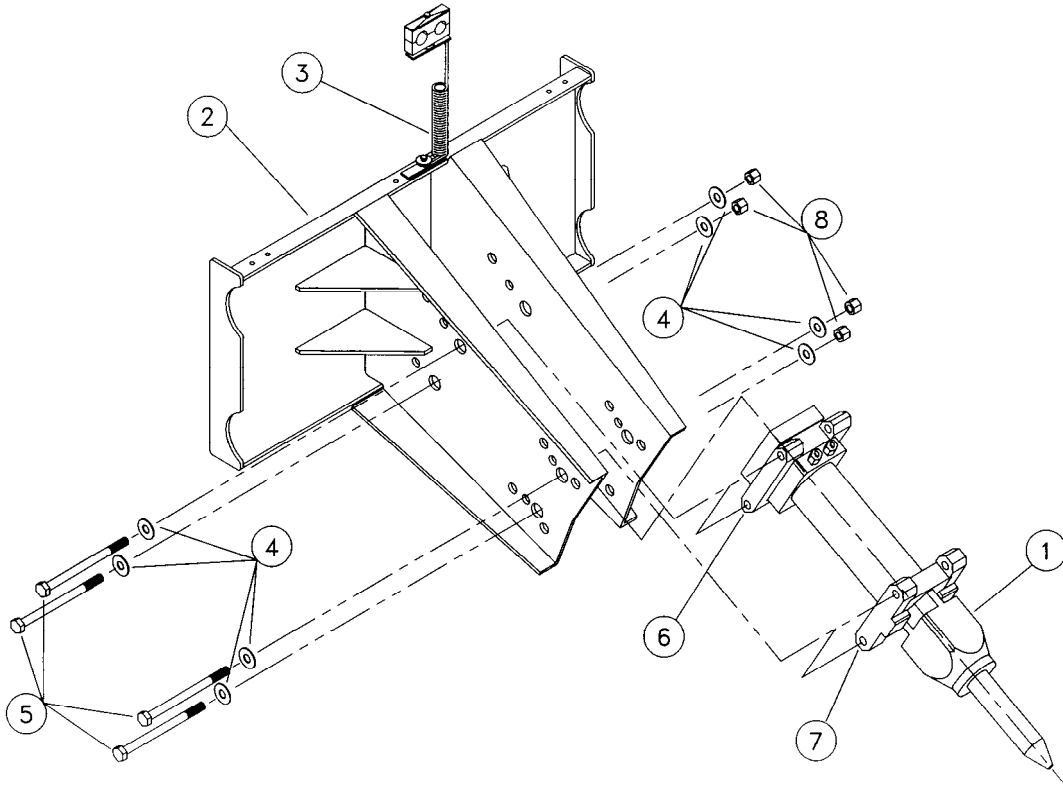


ITEM	PART NUMBER	QUANTITY	DESCRIPTION
1	KF4QTT or KF4FSP	1	HydraRam, T-Box or Flange Style*
2	K26318	1	Universal Quick Attach Bracket
3	KF430403	8	3/4 - 10 UNC Bolt x 3 1/4" Long (Grade 8)
4	K02025	8	3/4 - 10 UNC Nut
5	K10278	8	3/4" Hardened Washer
6	K14950	1	Hose Saver Spring Bracket, 1/2" Hose
7	K10194	8	3/4" Lock Washer
	K19624	2	Whip Hose, 100" (Not Shown)

* The Loader Attachment Plate shown here can be used with EITHER the T-Box or Flange mounting.



OPEN STYLE ONE-PIECE RIGID
QUICK ATTACH BRACKET
For KF4SS HYDRARAM



ITEM	PART NUMBER	QUANTITY	DESCRIPTION
1	KF4B	1	Hammer, Bare
2	K26278	1	Universal Quick Attach Bracket
3	K14950	1	Hose Saver Spring Bracket, 1/2" Hose
4	K07236	8	7/8" Flat Washer
5	K10188	4	7/8"-9 UNC x 10 1/2" Hex Head Cap Screw
6	KF430416	2	Set Plate (B)
7	KF430415	2	Set Plate (A)
8	K10189	4	7/8"-9 UNC NC Lock Nut
	K15845	2	Whip Hose, 120" (Not Shown)



SERVICE TOOL KIT

P/N KF490001

Kent includes a tool kit with every new hydraulic breaker. This tool kit contains many of the special tools and wrenches required to perform normal maintenance or repairs on the breaker. This is a basic tool kit, and is by no means complete or comprehensive, but it does contain some specialized tools, and wrench sizes not commonly found in the field. The following illustration depicts a typical tool kit and its contents:

