

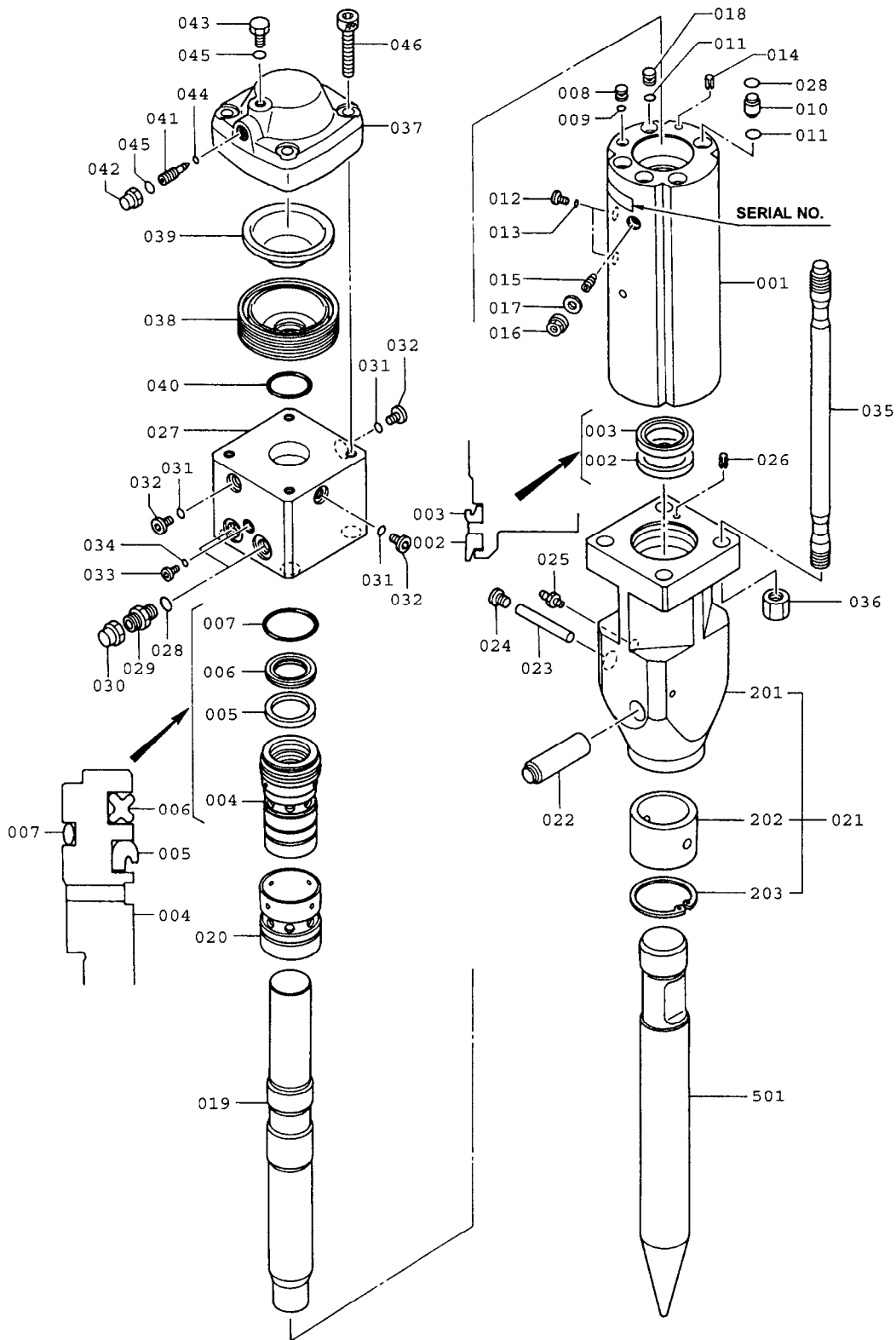
SECTION VI

PARTS LIST

F3 Serial No. 5001 ~ & up

*Revised: October, 2009
Section VI - Page # 1
KF3 s/n 5001 and Up
F3-K107-3*

F3 HYDRARAM PARTS BREAKDOWN



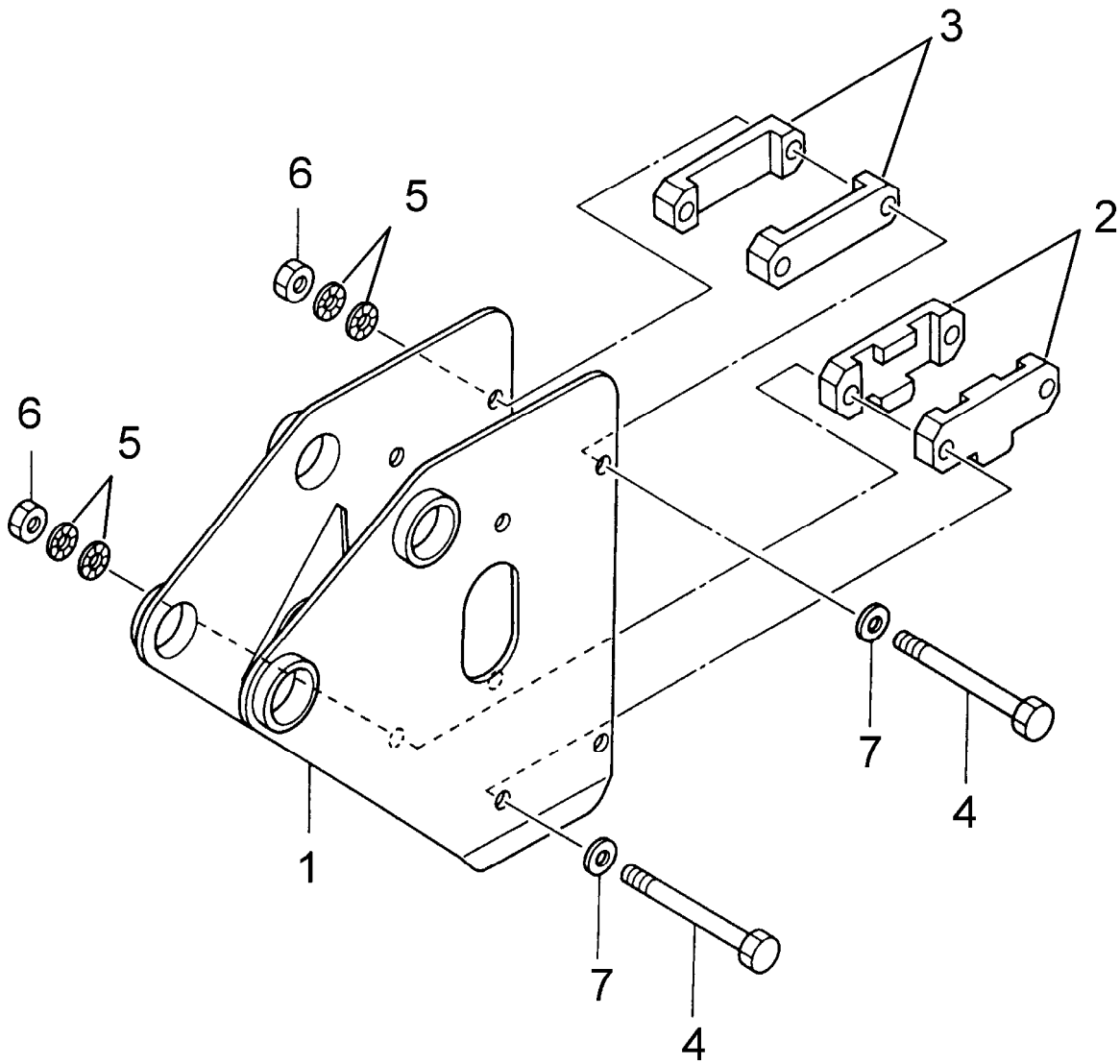
F3 HYDRARAM PARTS LIST



<u>ITEM</u>	<u>PART NUMBER</u>	<u>QTY</u>	<u>DESCRIPTION</u>	<u>ITEM</u>	<u>PART NUMBER</u>	<u>QTY</u>	<u>DESCRIPTION</u>
001	KF3-10201	1	Cylinder	025	K170312-00000	1	Grease Nipple
002	KHB3R-10106	1	Dust Seal [/S]	026	K154037-10025	1	Spring Pin
003	KHB3R-10107	1	U-Packing [/S]	027	KF3-3021	1	Back Head
004	KF3-10111	1	Seal Retainer	028	K160011-00018	4	O-Ring [/S]
005	KHB2R-10107	1	U-Packing [/S]	029	K15287	2	Port Adapter [/O]
006	KF3-10114	1	Seal Ring [/S]	030	-- Not Used --	2	Union Cap [/O]
007	K161021-00065	1	O-Ring [/S]	031	K160011-00011	3	O-Ring [/S]
008	KHB2R-10120	1	Plug [/S]	032	K084891-02000	3	GPF Plug
009	K160011-10010	1	O-Ring [/S]	033	K084891-01000	1	GPF Plug
010	KF3-10121	4	Bushing [/S]	034	K160011-00008	1	O-Ring [/S]
011	K160011-00018	4	O-Ring [/S]	035	KF3-36201	4	Through Bolt
012	K084891-01000	3	GPF Plug	036	KF3-36202	4	Hexagon Nut
013	K160011-00008	3	O-Ring [/S]		KF3-70001	1	Accumulator
014	K154037-10025	1	Spring Pin	037	KF3-70101	(1)	Accumulator Cap
015	KF4-10231	1	Valve Adjuster	038	KF3-70102	(1)	Accumulator Body
016	KF4-10233	1	Seal Nut	039	K007320-70104	(1)	Diaphragm
017	KHB1G-10532	1	Seal Washer [/S]	040	K161021-00055	(1)	O-Ring [/S]
018	KF3-10220	1	Plug	041	K007120-70134	(1)	Valve
019	KF3-11101	1	Piston	042	KHB2G-70121	(1)	Cap
020	KF3-13101	1	Valve	043	K007010-70030	(1)	Plug
021	KF3-20201	1	Fronthead	044	K160011-00005	(1)	O-Ring [/S]
201	KF3-20202	(1)	Fronthead, Bare	045	K160011-00014	(2)	O-Ring [/S]
202	KHB3R-20103	(1)	Front Bushing	046	K102032-16060	(4)	Socket Bolt
203	K264020-00070	(1)	Snap Ring				
022	KF3-20206	1	Rod Pin (Retainer)	501	KF3-25111	1	Blunt Tip [/O]
023	KF3-20207	1	Stop Pin	501	KF3-25114	1	Chisel Bit [/O]
024	KHB2R-20108	1	Screw Plug [/S]	501	KF3-25115	1	Moil Point

() Bracketed quantities indicate items included with the prior assembly.
 [/O] Items marked Option /O are optional depending on configuration
 [/S] Items marked Option /S are included in the KF3-92011 Seal Kit
 (Refer to Section VII for Seal Kit Details)

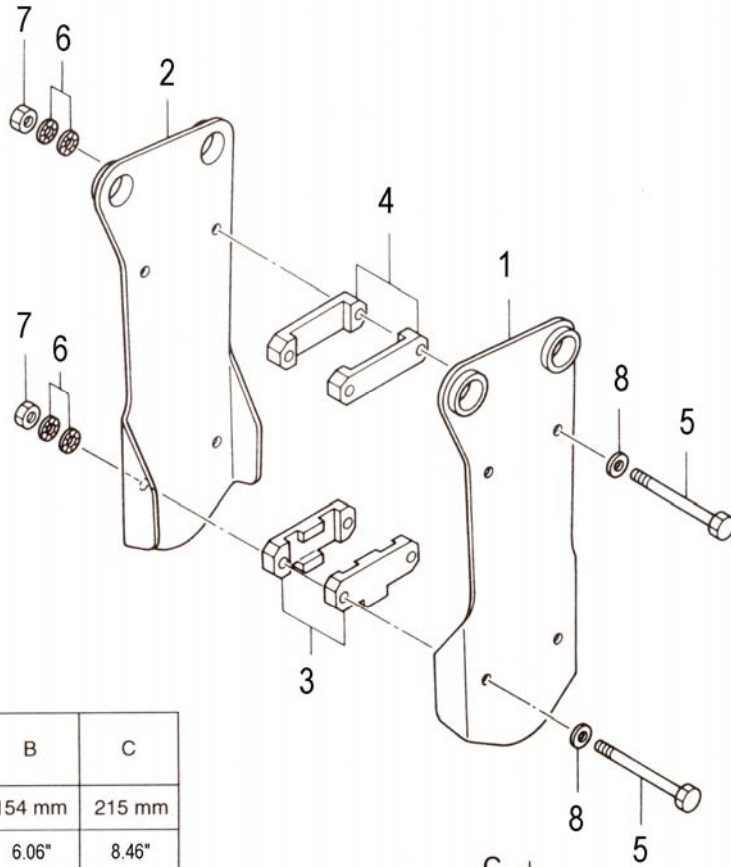
SIDE PLATES
F3TLB HYDRARAM
For TRACTOR-LOADER-BACKHOES



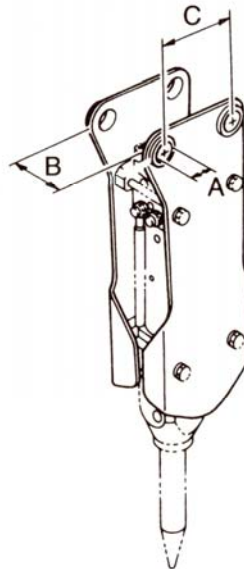
PARTS LIST
F3TLB HYDRARAM

<i>ITEM</i>	<i>PART NUMBER</i>	<i>QUANTITY</i>	<i>DESCRIPTION</i>
1	KF3-80301	1	Side Plate Bracket
2	KF3-80111	2	Lower Set Plate (A)
3	KF3-80112	2	Upper Set Plate (B)
4	K101032-20200	4	Hex Bolt
5	KHB3R-81114	4	Lock Washer Disk
6	K120132-20000	4	Hex Nut
7	K140112-20000	4	Flat Washer

SIDE PLATES
F3FB HYDRARAM



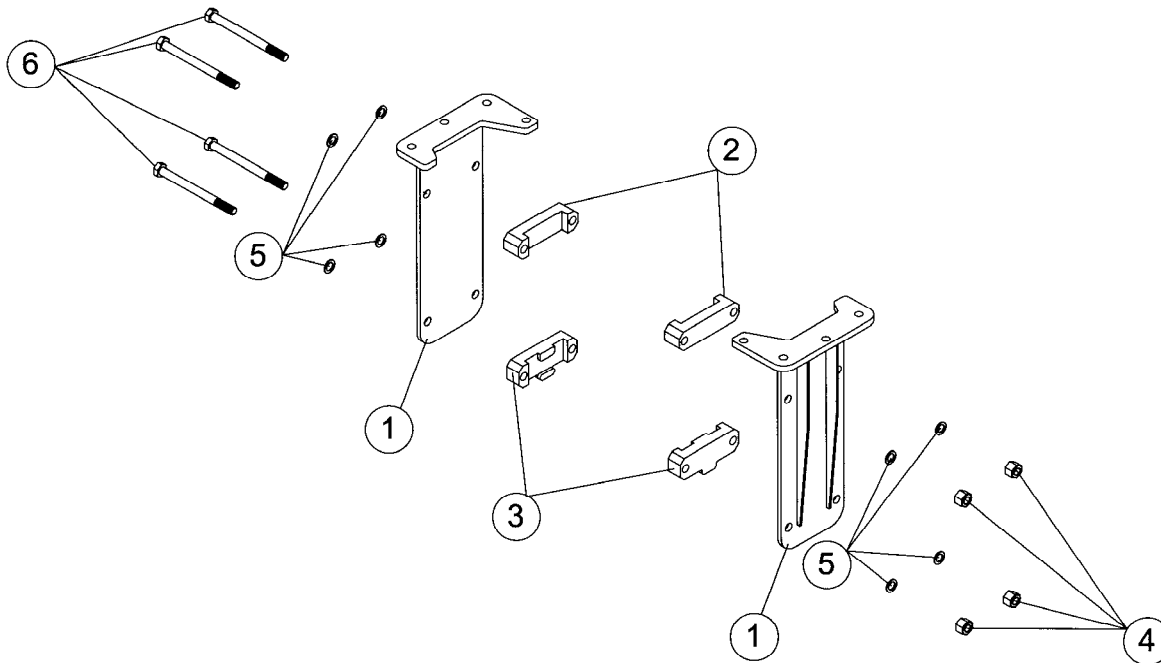
A	B	C
φ 60 mm	154 mm	215 mm
2.36"	6.06"	8.46"



PARTS LIST
F3FB HYDRARAM

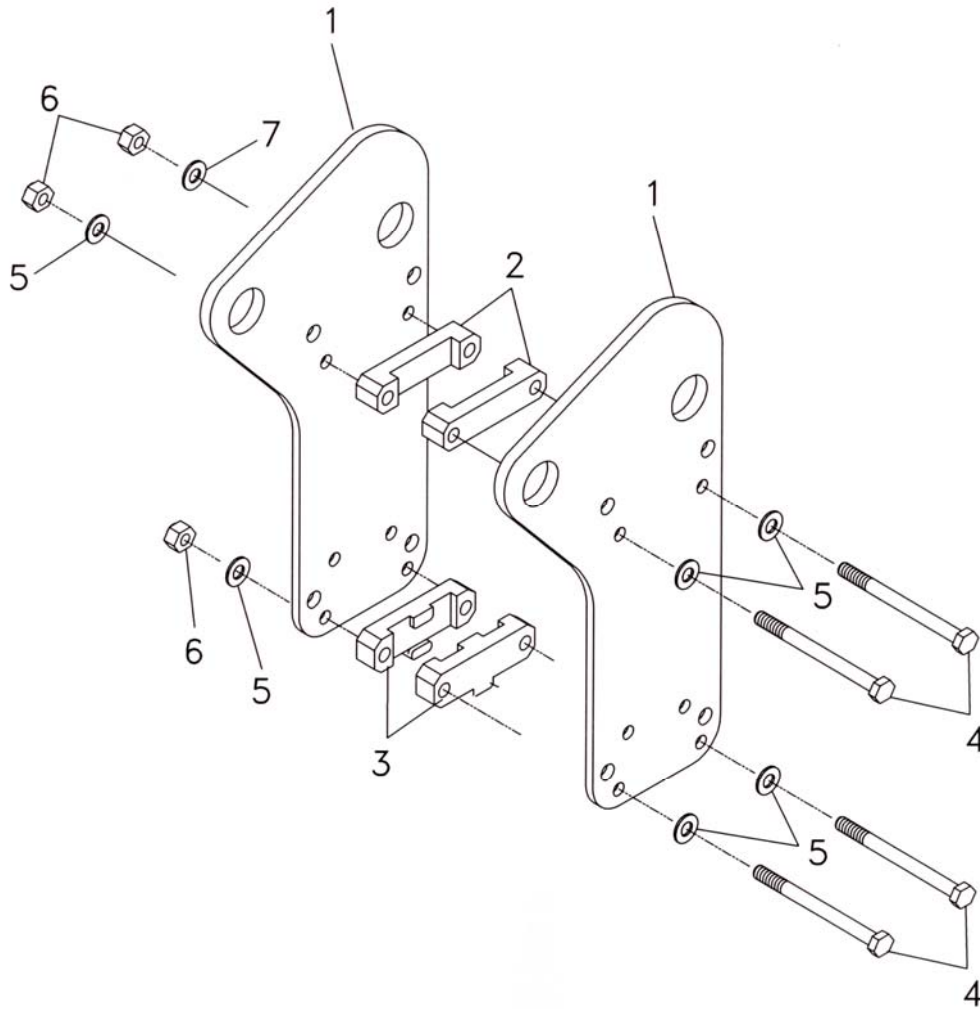
<i>ITEM</i>	<i>PART NUMBER</i>	<i>QUANTITY</i>	<i>DESCRIPTION</i>
001	KF380101	1	Side Plate L.H.
002	KF380102	1	Side Plate R.H.
003	KF380111	2	Set Plate (A)
004	KF380112	2	Set Plate (B)
005	K10103220200	4	Hex Head Bolt
006	KHB3R81114	4	Disk Washer
007	K12013220000	4	Nut
008	K14011220000	4	Washer

FLANGE SIDE PLATES
F3FSP HYDRARAM



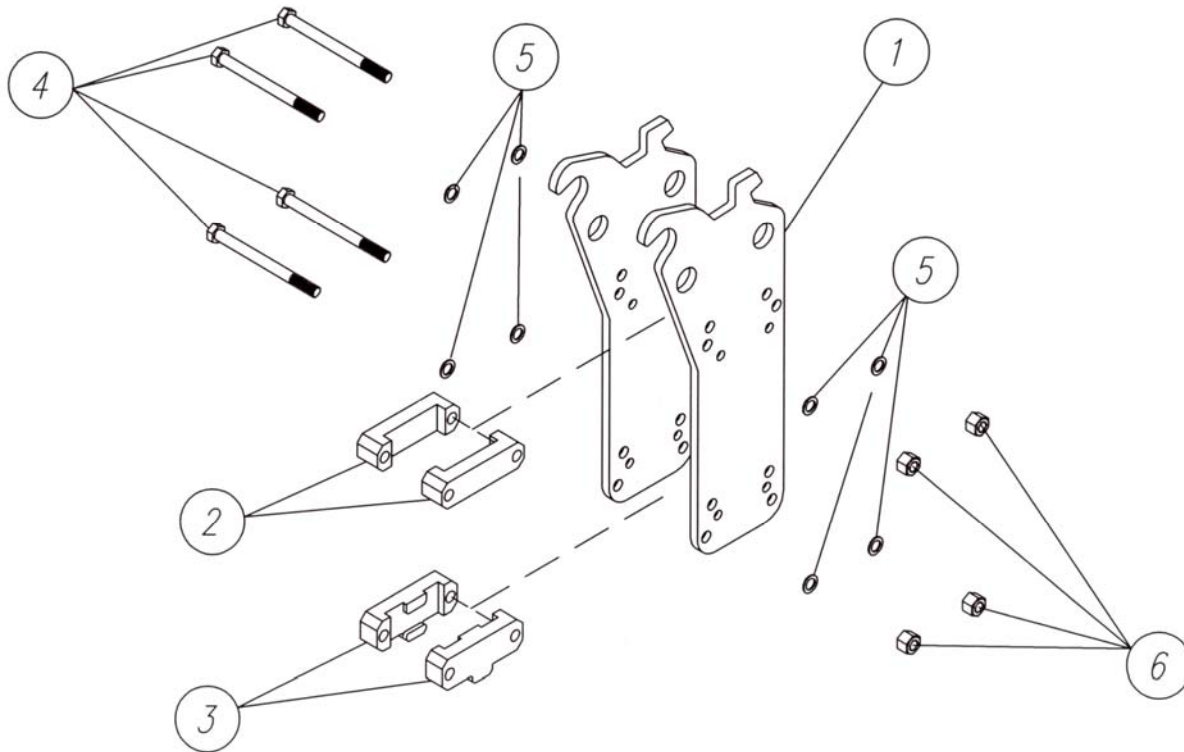
<i>ITEM</i>	<i>PART NUMBER</i>	<i>QUANTITY</i>	<i>DESCRIPTION</i>
1	KF30002	2	Flange Side Plate
2	KF3-30316	2	Upper Set Plate
3	KF3-30315	2	Lower Set Plate
4	K10195	4	3/4"-10 UNC Locknut
5	K07234	8	3/4" Flat Washer
6	KF3-30314	4	3/4"-10 UNC x 10 1/2" HHCS, GR.5

MINI-EXCAVATOR SIDE PLATES
F3ME HYDRARAM



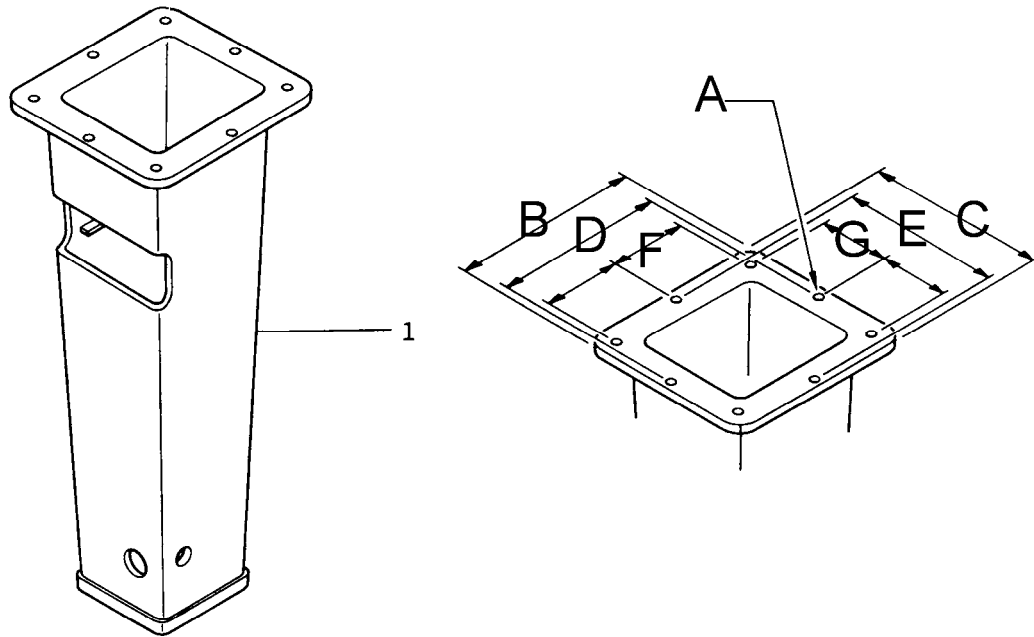
<i>ITEM</i>	<i>PART NUMBER</i>	<i>QUANTITY</i>	<i>DESCRIPTION</i>
1	K28211	2	ME Side Plate
2	KF330316	2	Set Plate "B"
3	KF330315	2	Set Plate "A"
4	K28206	4	3/4"-10 UNC x 11" HHCS, GR.5
5	K07234	4	3/4" Flat Washer
6	K10195	8	3/4"-10 UNC Lockwasher

WB 27/35 EXCAVATOR SIDE PLATES
F3WBME HYDRARAM



<i>ITEM</i>	<i>PART NUMBER</i>	<i>QUANTITY</i>	<i>DESCRIPTION</i>
1	KF40076	2	WBME Side Plate
2	KF330316	2	Set Plate "B"
3	KF330315	2	Set Plate "A"
4	K28206	4	¾"-10 UNC x 11" HHCS, GR.5
5	K07234	4	¾" Flat Washer
6	K10195	8	¾"-10 UNC Lockwasher

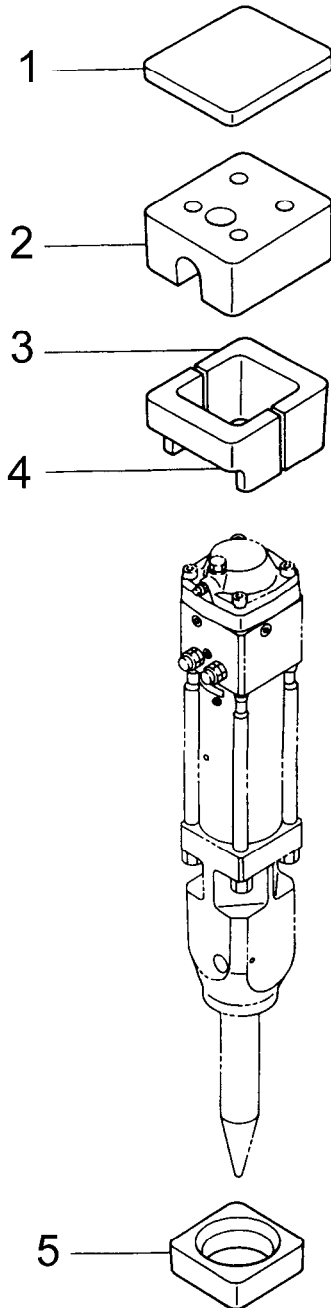
T-BOX MOUNTING
F3QT HYDRARAM



<i>ITEM</i>	<i>PART NUMBER</i>	<i>QUANTITY</i>	<i>DESCRIPTION</i>
1	KF3-88201	1	T-Box Weldment

	<u>Inch</u>	<u>Milimeter</u>	
A	0.708	18	Bolt Hole Diameter
B	12.519	318	Flange, Long Side
C	11.732	298	Flange, Short Side
D	11.181	284	Center to Center
E	10.394	264	Center to Center
F	5.039	128	Center to Center
G	4.646	118	Center to Center

DAMPER PARTS LIST
F3QT HYDRARAM T-BOX

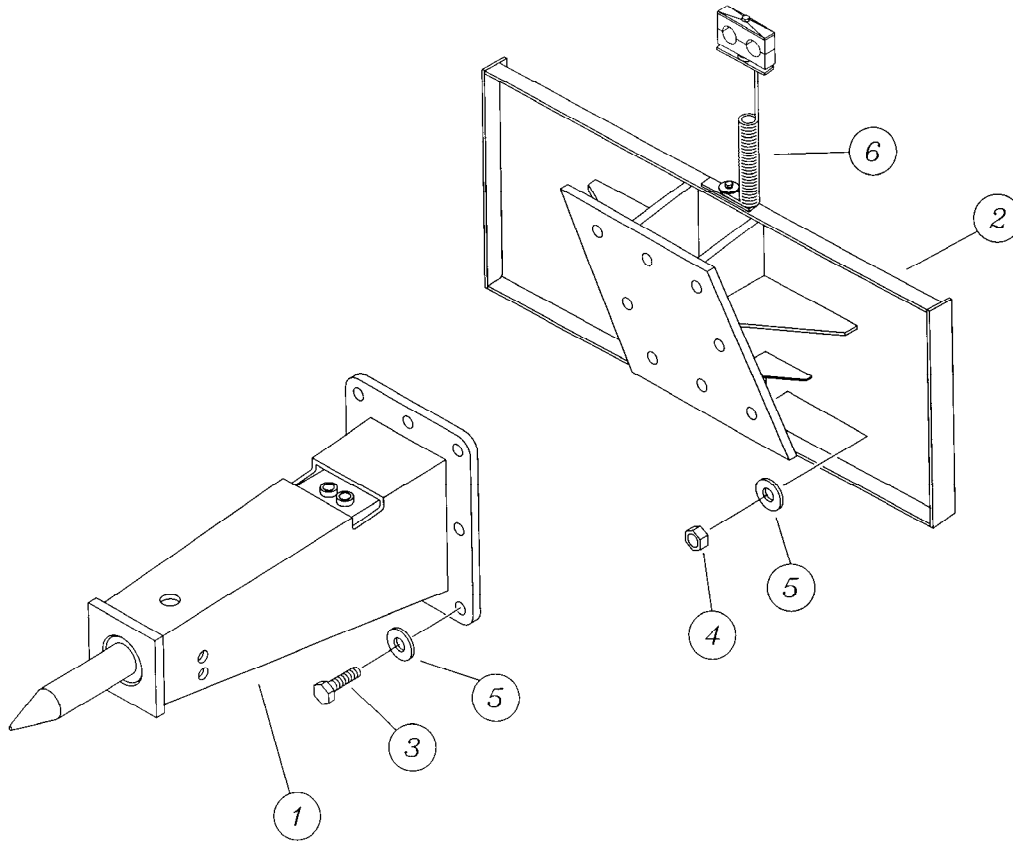


DAMPER PARTS LIST

F3QT HYDRARAM T-BOX

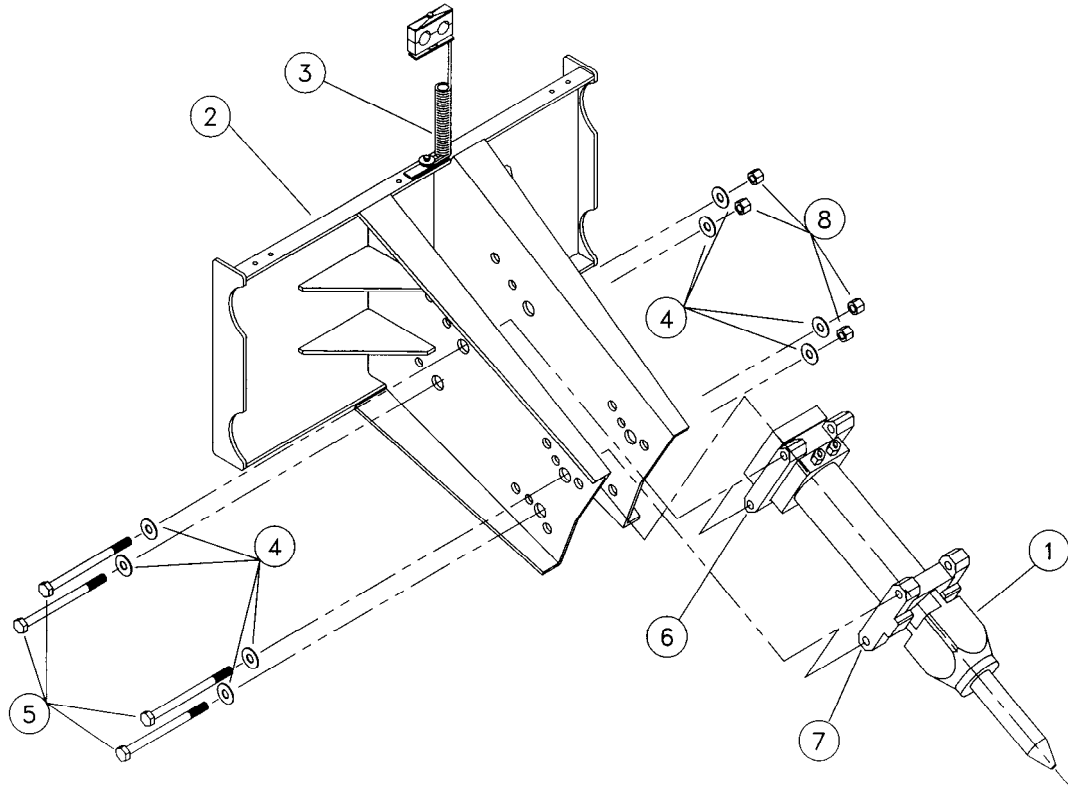
<i>ITEM</i>	<i>PART NUMBER</i>	<i>QUANTITY</i>	<i>DESCRIPTION</i>
1	KF3-88122	1	Top Damper
2	KF3-88121	1	Top Spacer
3	KF3-88128	1	Back Damper, Half
4	KF3-88127	1	Back Damper, Half
5	KF3-88124	1	Front Damper

BOLTED ONE-PIECE RIGID
QUICK ATTACH BRACKET
For F3QT and F3FSP HYDRARAM



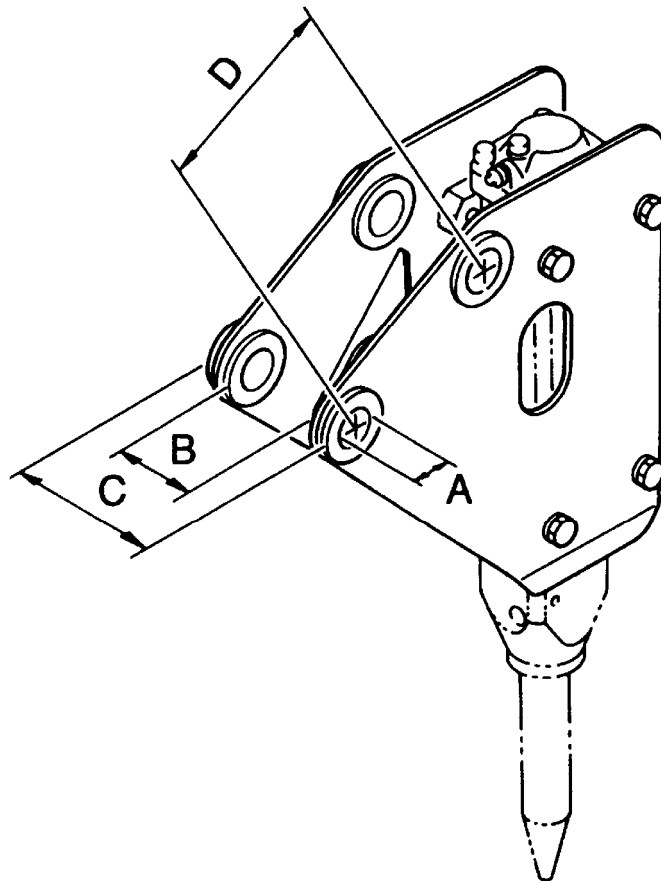
ITEM	PART NUMBER	QUANTITY	DESCRIPTION
1	KF3QT	1	Hammer Complete, T-Box Style
2	K26670	1	Universal Quick Attach Bracket
	K26672	---	Quick Attach Bracket for Case Unloaders
3	KF3-30303	8	5/8 - 11 UNC Bolt x 3 1/4" Long (Grade 8)
4	K06346	8	5/8 - 11 UNC Lock Nut
5	K18982	16	5/8" Hardened Washer
6	K14950	1	Hose Saver Spring Bracket, 1/2" Hose
	K15287	2	Whip Hose (Not Shown)

F3SS HYDRARAM
OPEN STYLE ONE-PIECE RIGID
QUICK ATTACH BRACKET



ITEM	PART NUMBER	QUANTITY	DESCRIPTION
1	KF3B	1	Hammer, Bare
2	K26278	1	Universal Quick Attach Bracket
3	K14950	1	Hose Saver Spring Bracket, 1/2" Hose
4	K07234	8	3/4 Flat Washer
5	KF3-30314	4	3/4"-10 UNC x 10 1/2" Hex Head Cap Screw
6	KF3-30316	2	Set Plate (B)
7	KF3-30315	2	Set Plate (A)
8	K10195	4	3/4"-10 NC Lock Nut
	K15287	2	Whip Hose (Not Shown)

MOUNTING DIMENSIONS
F3TLB HYDRARAM
For TRACTOR-LOADER-BACKHOES



	<u>Inch</u>	<u>Milimeter</u>	
A	2.362"	60	Pin Boss, I.D.
B	6.063"	154	Inside Spacing
C	8.425"	214	Outside Spacing
D	9.685"	246	Pin, Center to Center

SERVICE TOOL KIT

P/N KBM3-90001

Furukawa Rock Drill USA includes a tool kit with every new hydraulic breaker. This tool kit contains many of the special tools and wrenches required to perform normal maintenance or repairs on the breaker. This is a basic tool kit, and is by no means complete or comprehensive, but it does contain some specialized tools, and wrench sizes not commonly found in the field. The following illustration depicts a typical tool kit and its contents:

