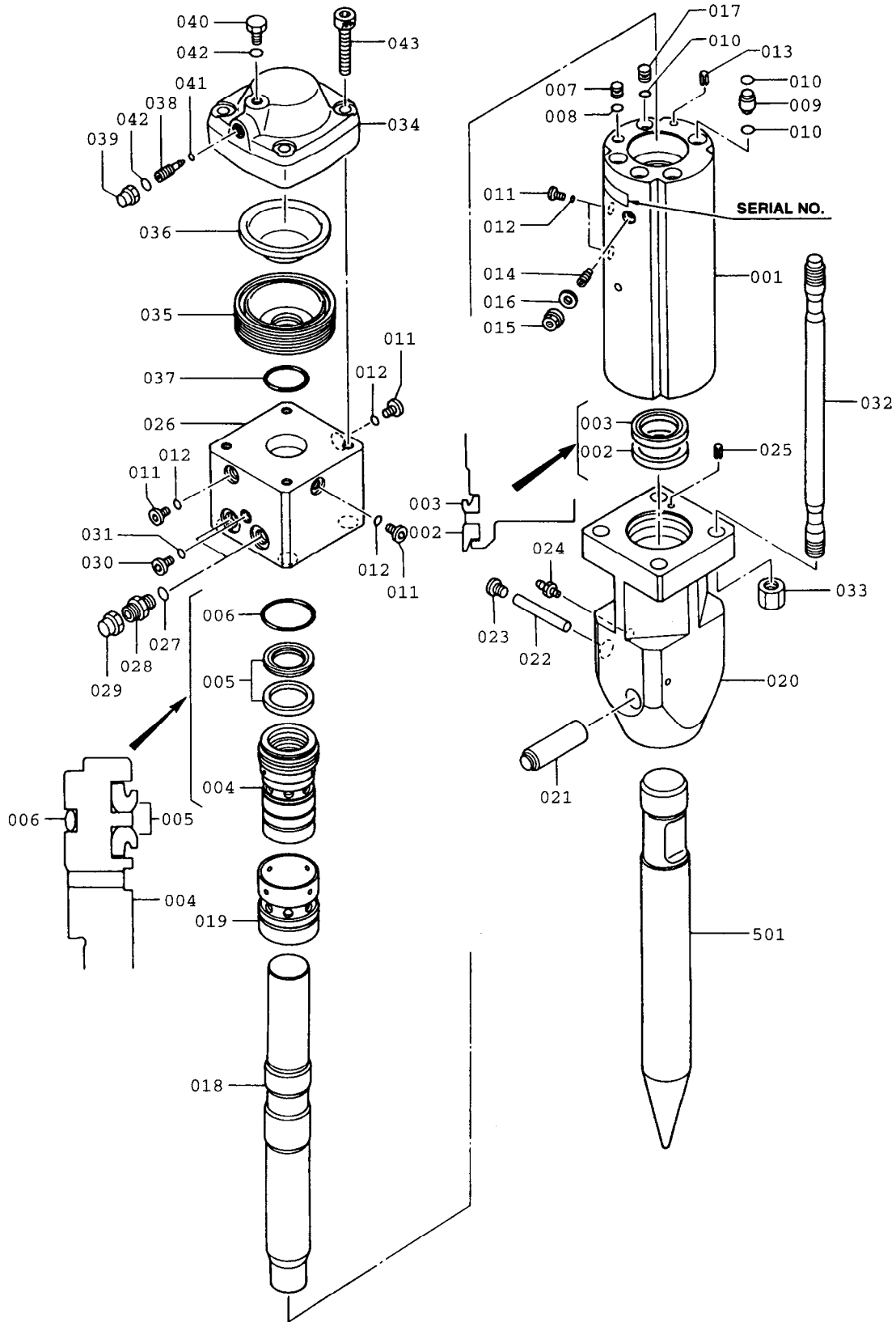


SECTION VI

PARTS LIST

F1 Serial No. 5001 ~ & up

F1 HYDRARAM PARTS BREAKDOWN



F1 HYDRARAM PARTS LIST

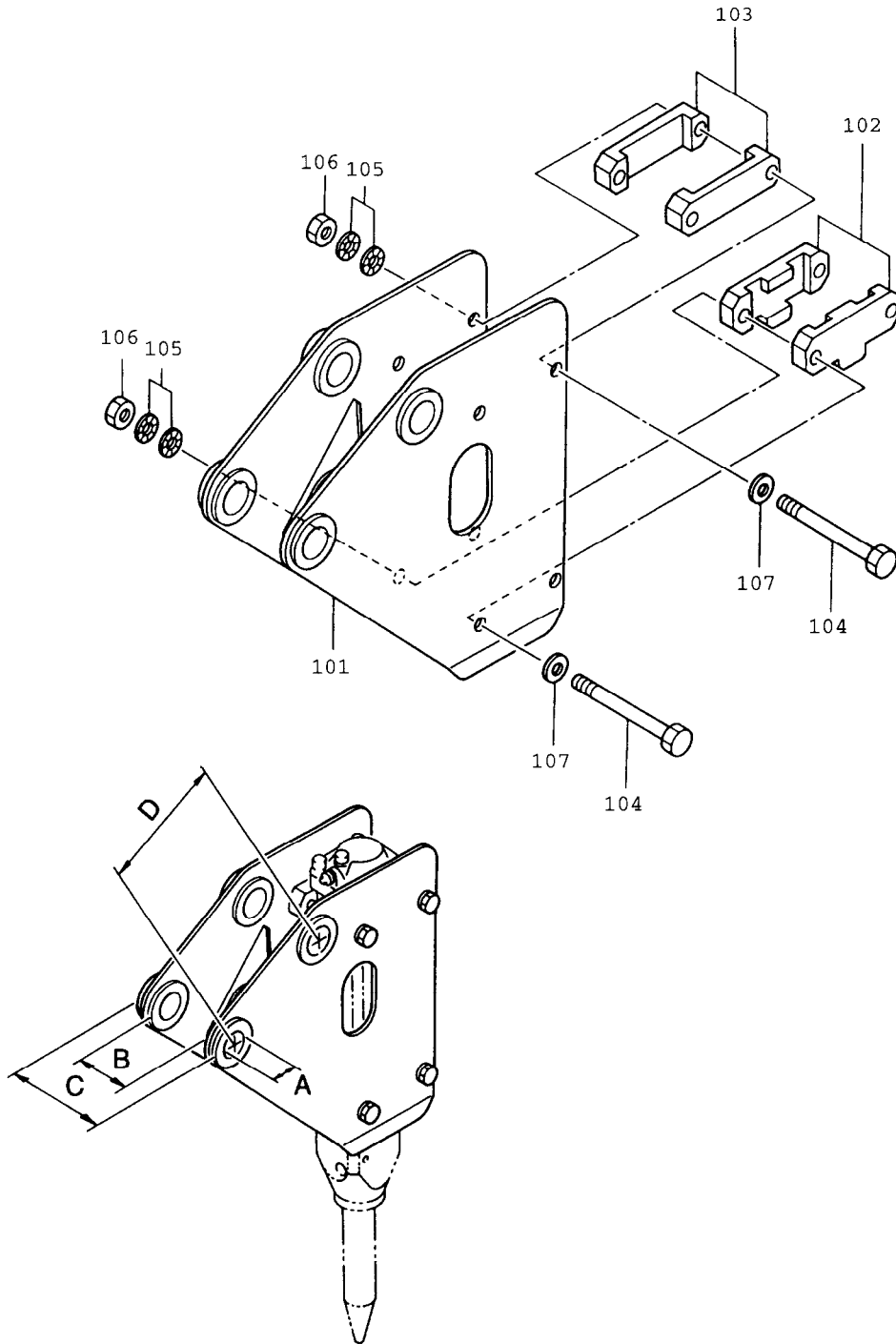


<u>ITEM</u>	<u>PART NUMBER</u>	<u>QTY</u>	<u>DESCRIPTION</u>	<u>ITEM</u>	<u>PART NUMBER</u>	<u>QTY</u>	<u>DESCRIPTION</u>
001	KF1-10201	1	Cylinder	025	K154037-10025	1	Spring Pin
002	KHB1R-10106	1	Dust Seal [/S]	026	KF1-30101	1	Back Head
003	KHB1R-10107	1	U-Packing [/S]	027	K160011-00014	6	O-Ring [/S]
004	KF1-10111	1	Seal Retainer	028	K084861-03000	2	Connector [/O]
005	KHB1G-10512	2	U-Packing [/S]	029	K084898-03000	2	Union Cap [/O]
006	K161021-00050	1	O-Ring [/S]	030	K084891-01000	4	GPF Plug
007	KHB2R-10120	1	Plug [/S]	031	K160011-00008	4	O-Ring [/S]
008	K160011-10010	1	O-Ring [/S]	032	KF1-36201	4	Through Bolt
009	KF1-10121	4	Bushing [/S]	033	KF1-36202	4	Hexagon Nut
010	K160011-00014	5	O-Ring [/S]		KF1-70001	1	Accumulator Group
011	K184891-01000	2	GPF Plug	034	KF1-70101	(1)	Accumulator Cap
012	K160011-00008	2	O-Ring [/S]	035	KHB2G-70202	(1)	Accumulator Body
013	K154037-10025	1	Spring Pin	036	KHB2G-70111	(1)	Diaphragm
014	KF2-10231	1	Valve Adjuster	037	K161021-00055	(1)	O-Ring [/S]
015	KF4-10233	1	Sealing Nut	038	K007120-70134	(1)	Valve
016	KHB1G-10532	1	Seal Washer [/S]	039	KHB2G-70121	(1)	Cap
017	KF1-10220	1	Plug	040	K007010-70030	(1)	Plug
018	KF1-11101	1	Piston	041	K160011-00005	(1)	O-Ring [/S]
019	KHB1R-13101	1	Valve	042	K160011-00014	(1)	O-Ring [/S]
020	KF1-20201	1	Fronthead	043	K102032-16060	4	Socket Bolt
021	KF1-20206	1	Rod Retainer Pin	*	KF1-92010	/S	Seal Kit
022	KF1-20207	1	Stop Pin	501	KF1-25111	1	Blunt Tip [/O]
023	KHB05R-20108	1	Screw Plug [/S]	501	KF1-25114	1	Chisel Bit [/O]
024	K170312-00000	1	Grease Nipple	501	KF1-25115	1	Moil (Cone) Point

() Bracketed quantities indicate items included with the prior assembly.
 [/O] Items marked Option /O are optional depending on configuration
 [/S] Items marked Option /S are included in the KF1-92011 Seal Kit

* (Not shown. Refer to Section VII for Seal Kit Details)

F1TLB HYDRARAM
TRACTOR-LOADER-BACKHOE
SIDE BRACKET

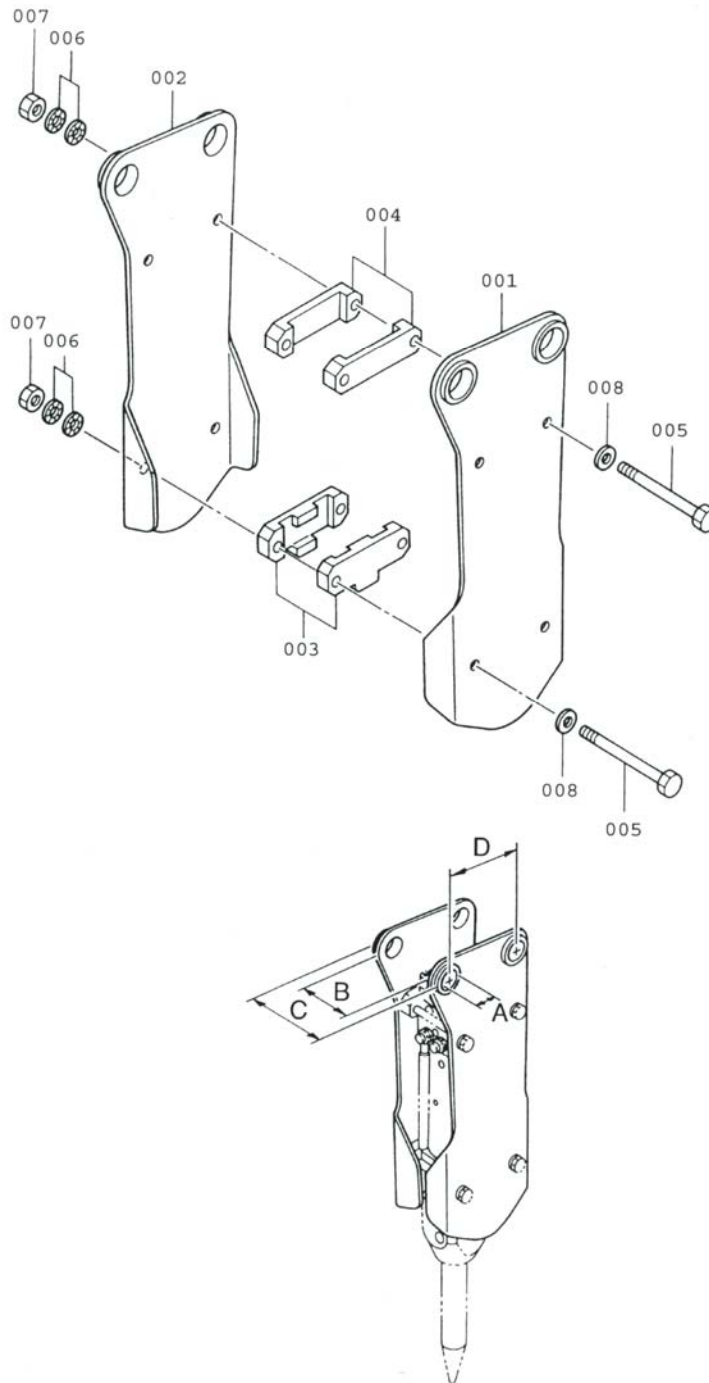


F1TLB HYDRARAM
TRACTOR-LOADER-BACKHOE
KF1-81003
SIDE BRACKET

<i>ITEM</i>	<i>PART NUMBER</i>	<i>QUANTITY</i>	<i>DESCRIPTION</i>
101	KF1-81301	1	Side Bracket
102	KF1-80111	2	Set Plate "A"
103	KF1-80112	2	Set Plate "B"
104	K101032-16170	4	Hex Head Bolt
105	KHB1R-81104	4	Washer Disk
106	K120132-16000	4	Nut
107	K140112-16000	4	Washer
*	K12374	2	Whip Hose (* Not Shown)

	<u>Inch</u>	<u>Milimeter</u>	
A	1.772	45	Boss Hole Diameter
B	5.118	130	Bracket Inside Spacing
C	7.087	180	Bracket Outside Width
D	6.339	161	Pin Center to Center

F1FB HYDRARAM
KF1-81001
TOP BRACKET



F1FB HYDRARAM
KF1-81001
TOP BRACKET

<i>ITEM</i>	<i>PART NUMBER</i>	<i>QUANTITY</i>	<i>DESCRIPTION</i>
001	KF1-80101	1	Side Plate R.H.
002	KF1-80102	1	Side Plate L.H.
003	KF1-80111	2	Set Plate "A"
004	KF1-80112	2	Set Plate "B"
005	K101032-16170	4	Hex Head Bolt
006	KHB1R-81104	4	Disk Washer
007	K120132-16000	4	Nut
008	K140112-16000	4	Washer
*	K12374	2	Whip Hose (* Not Shown)

	<u>Inch</u>	<u>Milimeter</u>	
A	1.772	45	Boss Hole Diameter
B	5.118	130	Bracket Inside Spacing
C	7.087	180	Bracket Outside Width
D	50511	140	Pin Center to Center

MOUNTING PIN KIT FOR
F1TLB HAMMERS

Serial Number

Base Machine Make: _____
 Base Machine Model: _____
 Dipperstick Pin Diameter: _____
 Link Pin Diameter: _____
 Dipperstick Width: _____
 Link Pin Width: _____

MOUNTING KIT PART NO: _____

Consisting of the following:

<i>ITEM</i>	<i>PART NUMBER</i>	<i>QUANTITY</i>	<i>DESCRIPTION</i>
1	_____	1	_____ Dia. Mounting Pin x _____ lg.
2	_____	1	_____ Dia. Mounting Pin x _____ lg.
3	_____	2	_____ Dia. Mounting Bushing x _____ lg.
4	_____	2	_____ Dia. Mounting Bushing x _____ lg.

SERVICE TOOL KIT

P/N KF190001

Furukawa Rock Drill USA includes a tool kit with every new hydraulic breaker. This tool kit contains many of the special tools and wrenches required to perform normal maintenance or repairs on the breaker. This is a basic tool kit, and is by no means complete or comprehensive, but it does contain some specialized tools, and wrench sizes not commonly found in the field. The following illustration depicts a typical tool kit and its contents:

